

STAR Drawing Number Summary Report

| STAR Drawing # | Rev | Pg | Inst Drawing # | Title Line 2 | Title Line 3 |
|----------------|-----|----|----------------|---------------------|---------------------------------------|
| TPC750-E-1 | A | 1 | 24A7606B | TPC Assemble & Test | Sector Mounting Tool Assembly |
| ✓ TPC751-B-1 | B | 1 | 24A7612B ✓ | TPC Assemble & Test | SMT - Worm Gear 1 |
| ✓ TPC752-A-1 | A | 1 | 24A7621A ✓ | TPC Assemble & Test | SMT - Bearing Sleeve |
| ✓ TPC753-C-1 | B | 1 | 24A7633B ✓ | TPC Assemble & Test | SMT - Pillow Block |
| TPC754-D-1 | A | 1 | 24A8244A | TPC Assemble & Test | SMT - Components |
| ✓ TPC755-D-1 | A | 1 | 24A7654B ✓ | TPC Assemble & Test | SMT - Inner Tube |
| ✓ TPC756-B-1 | A | 1 | 24A7662A ✓ | TPC Assemble & Test | SMT - Bearing Retainer |
| ✓ TPC757-E-1 | C | 1 | 24A7676C ✓ | TPC Assemble & Test | SMT - Tube Mount |
| ✓ TPC758-A-1 | A | 1 | 24A7681A ✓ | TPC Assemble & Test | SMT - Gearbox Plug |
| ✓ TPC759-C-1 | A | 1 | 24A7693A ✓ | TPC Assemble & Test | SMT - Gearbox Face |
| ✓ TPC760-D-1 | A | 1 | 24A7704B ✓ | TPC Assemble & Test | SMT - Geartrain Housing Cover |
| ✓ TPC761-D-1 | B | 1 | 24A7714B ✓ | TPC Assemble & Test | SMT - Geartrain Housing |
| ✓ TPC762-E-1 | B | 1 | 24A7726B ✓ | TPC Assemble & Test | SMT - Gearbox |
| ✓ TPC763-A-1 | A | 1 | 24A7731A ✓ | TPC Assemble & Test | SMT - Bushing |
| ✓ TPC764-B-1 | A | 1 | 24A7742A ✓ | TPC Assemble & Test | SMT - Gearbox Cover |
| ✓ TPC765-A-1 | A | 1 | 24A7751A ✓ | TPC Assemble & Test | SMT - Spacer Bushing |
| ✓ TPC766-A-1 | A | 1 | 24A7761A ✓ | TPC Assemble & Test | SMT - Idler Shaft |
| ✓ TPC767-A-1 | B | 1 | 24A7771B ✓ | TPC Assemble & Test | SMT - Platen Shaft |
| ✓ TPC768-B-1 | C | 1 | 24A7782C ✓ | TPC Assemble & Test | SMT - Shaft 1 |
| TPC769-A-1 | B | 1 | 24A9861B | TPC Assemble & Test | SMT - Worm Gear 2 |
| ✓ TPC770-C-1 | B | 1 | 24A7803B ✓ | TPC Assemble & Test | SMT - Offset Tube |
| ✓ TPC771-A-1 | A | 1 | 24A7791B ✓ | TPC Assemble & Test | SMT - Platen Shaft Right Spacer |
| ✓ TPC772-A-1 | B | 1 | 24A7821B ✓ | TPC Assemble & Test | SMT - Shaft 4 |
| ✓ TPC773-A-1 | B | 1 | 24A7831B ✓ | TPC Assemble & Test | SMT - Shaft 2 |
| TPC774-A-1 | A | 1 | 24A7971B | TPC Assemble & Test | SMT - Platen Shaft Left Spacer |
| ✓ TPC775-E-1 | A | 1 | 24A7856E ✓ | TPC Assemble & Test | SMT - Mounting Flange, Inner Sector |
| TPC776-E-1 | A | 1 | 24A7866B | TPC Assemble & Test | SMT - Rail Support |
| TPC777-D-1 | A | 1 | 24A7874A | TPC Assemble & Test | SMT - Vertical Support Extension |
| TPC778-D-1 | A | 1 | 24A7884A | TPC Assemble & Test | SMT - Vertical Support Anchor Spool |
| TPC779-D-1 | A | 1 | 24A7894A | TPC Assemble & Test | SMT - Vertical Support Base |
| TPC780-E-1 | A | 1 | 24A9846B | TPC Assemble & Test | SMT - Spider Double Leg, Outer Sector |
| TPC781-D-1 | B | 1 | 24A9854B | TPC Assemble & Test | SMT - Spider Single Leg, Outer Sector |
| TPC782-D-1 | A | 1 | 21F0274A | TPC Assemble & Test | SMT - Lifting Beam Stabilizer |
| TPC783-C-1 | B | 1 | 24A7983B | TPC Assemble & Test | SMT - Spider Standoff |
| TPC784-D-1 | A | 1 | 24A7944B | TPC Assemble & Test | SMT - Adjusting Leg |
| TPC785-D-1 | A | 1 | 24A7954A | TPC Assemble & Test | SMT - Rigid Base |
| TPC786-B-1 | A | 1 | 24A9872A | TPC Assemble & Test | SMT - Spider Flange |
| TPC787-D-1 | B | 1 | 24A9884B | TPC Assemble & Test | SMT - Spider Single Leg, Inner Sector |
| TPC788-E-1 | A | 1 | 24A9896A | TPC Assemble & Test | SMT - Spider Double Leg, Inner Sector |
| TPC789-A-1 | A | 1 | 24A8201B | TPC Assemble & Test | SMT - Gear Spacer |
| TPC790-D-1 | A | 1 | 21F0284A | TPC Assemble & Test | SMT - Lifting Beam Assembly |
| TPC791-E-1 | A | 1 | 24A9836C | TPC Assemble & Test | SMT - Outer Sector Plate |
| TPC792-D-1 | A | 1 | 21F0294A | TPC Assemble & Test | SMT - Outer Sector Set Plate |
| TPC793-D-1 | A | 1 | 21F0264A | TPC Assemble & Test | SMT - Inner Sector Set Plate |
| ✓ TPC794-C-1 | A | 1 | 24A7643A ✓ | TPC Assemble & Test | SMT - Tube Plug Adapter 2 |
| TPC795-E-1 | A | 1 | 24A9046A | TPC Assemble & Test | SMT - Drawing Tree |
| TPC796-E-1 | A | 1 | 24A9376A | TPC Assemble & Test | TPC Cross Section |
| TPC797 | | | | TPC Assemble & Test | |

STAR Drawing Number Summary Report

| STAR Drawing # | Rev | Pg | Inst. Drawing # | Title Line 2 | Title Line 3 |
|----------------|-----|----|-----------------|------------------------------|--|
| TPC125-D-1 | A | 1 | 24A7314A | Outer Field Cage (OFC) | TOF Attachment Bracket |
| TPC126-E-1 | A | 1 | 24A9036A | Outer Field Cage (OFC) | OFC Nema Doubler ID |
| TPC127-D-1 | A | 1 | 24A8704A | Outer Field Cage (OFC) | Resister Cover Stringer |
| TPC128-E-1 | A | 1 | 24A8716A | Outer Field Cage (OFC) | Resistor Cover |
| TPC129-E-1 | A | 1 | 24A8766A | Outer Field Cage (OFC) | Resistor Cover Skin |
| TPC131-B-1 | A | 1 | 24A8812A | Outer Field Cage (OFC) | Resistor Cover Screw Sleeve |
| TPC132-E-1 | A | 1 | 24A8826A | Outer Field Cage (OFC) | Resistor Cover Assembly |
| TPC133-B-1 | A | 1 | 24A8582A | Outer Field Cage (OFC) | Resistor Cover Rib |
| TPC275-E-1 | A | 1 | 24A909A | Inner Field Cage (IFC) | Compliant End Outer Ring |
| TPC276-E-1 | A | 1 | 24A930A | Inner Field Cage (IFC) | Compliant End Inner Ring |
| TPC277-E-1 | A | 1 | 24A933A | Inner Field Cage (IFC) | Compliant End Inner Ring |
| TPC278-E-1 | A | 1 | 24A932A | Inner Field Cage (IFC) | Fixed End Mounting Ring |
| TPC279-E-1 | A | 1 | 24A931A | Inner Field Cage (IFC) | Fixed Inner Ring |
| TPC325-F-1 | A | 1 | 24A8666A | Central Membrane | 60° Ring Segment & Coupling |
| TPC326-F-1 | A | 1 | 24A8676A | Central Membrane | Final Machining-60° Outer Ring Segment |
| TPC327-D-1 | A | 1 | 24A8684A | Central Membrane | Membrane Grips |
| TPC328-F-1 | A | 1 | 24A9106A | Central Membrane | 90° Inner Ring Segment & Coupling |
| TPC329-F-1 | A | 1 | 24A9116A | Central Membrane | Final Machining - 90° Inner Ring Segment |
| TPC330-F-1 | A | 1 | 24A9126A | Central Membrane | Membrane Cutting Template |
| TPC350-E-1 | C | 1 | | Sector | Inner Sector Strongback |
| TPC351-C-1 | D | 1 | 24A0543D | Inner & Outer Sector | Wire Mount Pin, Tapered |
| TPC352-D-1 | A | 1 | 24A3954A | Inner Sector | Anode Wire Mount, Right |
| TPC353-D-1 | A | 1 | 24A4154A | Inner Sector to Outer Sector | Header Braze Assembly, RIGHT |
| TPC354-E-1 | A | 1 | 24A3696A | Inner Sector to Outer Sector | Cooling Manifold Assembly |
| TPC355-C-1 | A | 1 | 24A4843A | Inner Sector to Outer Sector | Drain Port, Left |
| TPC356-C-1 | A | 1 | 24A4883A | Inner Sector to Outer Sector | Drain Port, Right |
| TPC357-D-1 | A | 1 | 24A4584A | Inner Sector to Outer Sector | Gated Grid Wire Mount Assembly, Left |
| TPC358-D-1 | A | 1 | 24A4574A | Inner Sector to Outer Sector | Gated Grid Wire Mount Assembly, Right |
| TPC359-C-1 | A | 1 | 24A4023A | Inner Sector to Outer Sector | Gated Grid Wire Mount Extrusion |
| TPC360-D-1 | A | 1 | 24A4014A | Inner Sector to Outer Sector | Gated Grid Wire Mount, Left |
| TPC361-D-1 | A | 1 | 24A4004A | Inner Sector to Outer Sector | Gated Grid Wire Mount, Right |
| TPC362-D-1 | A | 1 | 24A4624A | Inner Sector | Header Braze Assembly, Left |
| TPC363-D-1 | A | 1 | 24A4634A | Inner Sector | Header Braze Assembly, Right |
| TPC364-C-1 | A | 1 | 24A4833A | Inner Sector | Header Port, Left |
| TPC365-C-1 | A | 1 | 24A4873A | Inner Sector | Header Port, Right |
| TPC366-E-1 | A | 1 | 24A4816A | Inner Sector | Lower Header, Left |
| TPC367-E-1 | A | 1 | 24A4856A | Inner Sector | Lower Header, Right |
| TPC368-D-1 | A | 1 | 24A4964A | Inner Sector to Outer Sector | Shield Wire Mount, Left, G-10 |
| TPC369-D-1 | A | 1 | 24A4594A | Inner Sector to Outer Sector | Shield Wire Mount, Right, G-10 |
| TPC370-D-1 | A | 1 | 24A4644A | Inner Sector to Outer Sector | Tube #01 Machining |
| TPC371-D-1 | A | 1 | 24A4654A | Inner Sector to Outer Sector | Tube #02 Machining |
| TPC372-D-1 | A | 1 | 24A4664A | Inner Sector to Outer Sector | Tube #03 Machining |
| TPC373-D-1 | A | 1 | 24A4674A | Inner Sector to Outer Sector | Tube #04 Machining |
| TPC374-D-1 | A | 1 | 24A4684A | Inner Sector to Outer Sector | Tube #05 Machining |
| TPC375-D-1 | A | 1 | 24A4694A | Inner Sector to Outer Sector | Tube #06 Machining |
| TPC376-D-1 | A | 1 | 24A4704A | Inner Sector to Outer Sector | Tube #07 Machining |
| TPC377-D-1 | A | 1 | 24A4714A | Inner Sector to Outer Sector | Tube #08 Machining |
| TPC378-D-1 | A | 1 | 24A4724A | Inner Sector to Outer Sector | Tube #09 Machining |

STAR Drawing Number Summary Report

| STAR Drawing # | Rev | Pg | Inst. Drawing # | Title Line 2 | Title Line 3 |
|----------------|-----|----|-----------------|-------------------------------|------------------------------------|
| TPC379-D-1 | A | 1 | 24A4734A | Inner Sector to Outer Sector | Tube #10 Machining |
| TPC380-D-1 | A | 1 | 24A4744A | Inner Sector to Outer Sector | Tube #11 Machining |
| TPC381-D-1 | A | 1 | 24A4754A | Inner Sector to Outer Sector | Tube #12 Machining |
| TPC382-D-1 | A | 1 | 24A4764A | Inner Sector to Outer Sector | Tube #13 Machining |
| TPC383-D-1 | A | 1 | 24A4774A | Inner Sector to Outer Sector | Tube #14 Machining |
| TPC384-D-1 | A | 1 | 24A4784A | Inner Sector | Tube #15 Machining |
| TPC385-E-1 | A | 1 | 24A3736A | Inner Sector | Pad Plane Insulator Board |
| TPC386-B-1 | A | 1 | 24A6512A | Inner Sector to Outer Sector | Upper Header Extrusion |
| TPC387-D-1 | A | 1 | 24A4824A | Inner Sector | Upper Header, Left |
| TPC388-D-1 | A | 1 | 24A4864A | Inner Sector | Upper Header, Right |
| TPC389-B-1 | A | 1 | 24A4032A | Inner Sector to Outer Sector | Wire Mount Insu Board |
| TPC390-E-1 | A | 1 | 24A4296A | Inner Sector to Outer Sector | Cooling Manifold Assembly |
| TPC392-D-1 | A | 1 | 24A4054A | Outer Sector | Header Braze Assembly, Left |
| TPC393-E-1 | A | 1 | 24A4046A | Inner Sector to Outer Sector | Lower Header, Left |
| TPC394-E-1 | A | 1 | 24A4166A | Inner Sector to Outer Sector | Lower Header, Right |
| TPC395-D-1 | A | 1 | 24A4064A | Inner Sector to Outer Sector | Upper Header, Left |
| TPC396-D-1 | A | 1 | 24A4174A | Inner Sector to Outer Sector | Upper Header, Right |
| TPC397-B-1 | A | 1 | 24A0862A | Outer Sector Assembly | Support Bracket, 11th Cooling Tube |
| TPC398-B-1 | A | 1 | 24A0872A | Outer Sector Assembly | Support Bracket, 13th Cooling Tube |
| TPC399-B-1 | A | 1 | 24A0842A | Outer Sector Assembly | Support Bracket, 1st Cooling Tube |
| TPC400-B-1 | A | 1 | 24A0852A | Outer Sector Assembly | Support Bracket, 6th Cooling Tube |
| TPC401-C-1 | A | 1 | 24A4083A | Inner Sector to Outer Sector | Drain Port, Left |
| TPC402-C-1 | A | 1 | 24A4193A | Inner Sector to Outer Sector | Drain Port, Right |
| TPC403-C-1 | A | 1 | 24A0833A | Outer Sector Cooling Manifold | Header Port Bracket |
| TPC404-C-1 | A | 1 | 24A4073A | Inner Sector to Outer Sector | Header Port, Left |
| TPC405-C-1 | A | 1 | 24A4183A | Outer Sector Cooling Manifold | Header Port, Right |
| TPC406-E-1 | A | 1 | 24A4306A | Outer Sector Cooling Manifold | Tube #01 Machining |
| TPC407-E-1 | A | 1 | 24A4316A | Outer Sector Cooling Manifold | Tube #02 Machining |
| TPC408-E-1 | A | 1 | 24A4326A | Outer Sector Cooling Manifold | Tube #03 Machining |
| TPC409-E-1 | A | 1 | 24A4336A | Outer Sector Cooling Manifold | Tube #04 Machining |
| TPC410-E-1 | A | 1 | 24A4346A | Outer Sector Cooling Manifold | Tube #05 Machining |
| TPC411-E-1 | A | 1 | 24A4356A | Outer Sector Cooling Manifold | Tube #06 Machining |
| TPC412-E-1 | A | 1 | 24A4366A | Outer Sector Cooling Manifold | Tube #07 Machining |
| TPC413-D-1 | A | 1 | 24A4374A | Outer Sector Cooling Manifold | Tube #08 Machining |
| TPC414-D-1 | A | 1 | 24A4384A | Outer Sector Cooling Manifold | Tube #09 Machining |
| TPC415-D-1 | A | 1 | 24A4394A | Outer Sector Cooling Manifold | Tube #10 Machining |
| TPC416-D-1 | A | 1 | 24A4404A | Outer Sector Cooling Manifold | Tube #11 Machining |
| TPC417-D-1 | A | 1 | 24A4414A | Outer Sector Cooling Manifold | Tube #12 Machining |
| TPC418-D-1 | A | 1 | 24A4424A | Outer Sector Cooling Manifold | Tube #13 Machining |
| TPC419-D-1 | A | 1 | 24A4434A | Outer Sector Cooling Manifold | Tube #14 Machining |
| TPC420-D-1 | A | 1 | 24A4444A | Outer Sector Cooling Manifold | Tube #15 Machining |
| TPC421-D-1 | A | 1 | 24A4454A | Outer Sector Cooling Manifold | Tube #16 Machining |
| TPC422-D-1 | A | 1 | 24A3964A | Sector Cooling Manifold | Anode Wire Mount, Left |
| TPC425-E-1 | A | 1 | 24A7916A | Sector | Base Plate |
| TPC426-C-1 | A | 1 | 24A7923A | Sector | Calibration Fixture |
| TPC427-D-1 | A | 1 | 24A7934A | Sector | Fixture Base |
| TPC500-E-1 | B | 1 | 24A 7256B | Sector Support (Wheel) | Wheel Assembly — Sheet 1 |
| TPC501-E-1 | B | 1 | 24A 7266B | Sector Support (Wheel) | Common Hole Details - Sheet 2 |

STAR Drawing Number Summary Report

| STAR Drawing # | Rev | Pg | Inst. Drawing # | Title Line 2 | Title Line 3 |
|----------------|-----|----|-----------------|---------------------------|--|
| TPC502-E-1 | C | 1 | 24A 7276C | Sector Support (Wheel) | Front View Details — Sheet 3 |
| TPC503-E-1 | C | 1 | 24A 7286C | Sector Support (Wheel) | Front View Details — Sheet 4 |
| TPC504-E-1 | B | 1 | 24A 7296B | Sector Support (Wheel) | Rear View Common Hole Details — Sheet 5 |
| TPC505-E-1 | B | 1 | 24A7306B | Sector Support (Wheel) | Front View Nomenclature — Sheet 6 |
| TPC509-D-1 | A | 1 | 24A9056A | Sector Support (Wheel) | Electrostatic /Gas Manifold |
| TPC510-E-1 | A | 1 | 24A906A | Sector Support (Wheel) | Electrostatic Shield |
| TPC525-B-1 | C | 1 | 24A8422C | Laser System - Laser Raft | Single Raft Support |
| TPC526-B-1 | B | 1 | 24A8412B | Laser System - Laser Raft | Paired Support |
| TPC527-D-1 | A | 1 | 24A6504 | Laser System - Fan Out | Steering Prism 18 ° |
| TPC528-C-1 | A | 1 | 24A6573 | Laser System - Fan Out | Steering Prism 30° |
| TPC529-C-1 | A | 1 | 24A6484 | Laser System - Fan Out | Steering Prism 29° |
| TPC530-D-1 | A | 1 | 24A4996 | Laser System - Laser Raft | Raft Frame Assembly |
| TPC531-B-1 | A | 1 | 24A8432A | Laser System - Laser Raft | Bundle Holder |
| TPC532-B-1 | B | 1 | 24A8442B | Laser System - Laser Raft | Bundle Holder Insert |
| TPC533-B-1 | A | 1 | 24A8452A | Laser System - Laser Raft | Retaining Button |
| TPC534-B-1 | B | 1 | 24A8462B | Laser System - Laser Raft | Mirror Bundle Holder |
| TPC535-B-1 | A | 1 | 24A8472A | Laser System - Laser Raft | Paired Support, Fixed Base` |
| TPC536-B-1 | A | 1 | 24A8482A | Laser System - Laser Raft | Paired Support, Sliding Base |
| TPC537-B-1 | A | 1 | 24A8492A | Laser System - Laser Raft | Single Support Base |
| TPC538-D-1 | A | 1 | 24A8504A | Laser System - Laser Raft | Raft Assembly |
| TPC539-B-1 | A | 1 | 24A8512A | Laser System - Laser Raft | Raft Support Insert |
| TPC540-B-1 | A | 1 | 24A8522A | Laser System - Laser Raft | Raft Adjustment Screw |
| TPC541-B-1 | A | 1 | 24A8532A | Laser System - Laser Raft | Raft Spring Washer |
| TPC542-E-1 | A | 1 | 24A8546A | Laser System - Laser Raft | Raft cover Skin |
| TPC543-D-1 | A | 1 | 24A8554A | Laser System - Laser Raft | Raft Cover Stringer |
| TPC544-B-1 | A | 1 | 24A8562A | Laser System - Laser Raft | Raft Cover Rib |
| TPC545-B-1 | A | 1 | 24A8572A | Laser System - Laser Raft | Raft Cover Mounting Tab |
| TPC546-B-1 | A | 1 | 24A8882A | Laser System - Laser Raft | Raft Alignment Reticule |
| TPC547-E-1 | C | 1 | 24A8596C | Laser System - Laser Raft | Raft Cover Assembly |
| TPC130-B-1 | B | 1 | 24A8802B | Outer Field Cage (OFC) | Resistor Cover Mounting Screw |
| TPC134-C-1 | A | 1 | 24A8853A | Outer Field Cage (OFC) | Resistor Cover Drawing Structure |
| TPC135-D-1 | A | 1 | 24A9174A | Outer Field Cage (OFC) | V-Hole Cover Plate(-1)&HVFeedthrough(-2) |
| TPC136-D-1 | A | 1 | 24A9254A | Outer Field Cage (OFC) | High Voltage Cable Components |
| TPC137-D-1 | A | 1 | 24A9274A | Outer Field Cage (OFC) | High Voltage Feedthrough Coupling |
| TPC138-E-1 | A | 1 | 24A9286A | Outer Field Cage (OFC) | High Volt Cable Assembly |
| TPC139-D-1 | A | 1 | 24A9294A | Outer Field Cage (OFC) | Shield Cover Mod & Shield Cover Plate |
| TPC140-D-1 | A | 1 | 21F0074A | Outer Field Cage (OFC) | H.V. Resister Cover Stringer |
| TPC331-D-1 | A | 1 | 24A8696A | Central Membrane | Assembly |
| TPC332-D-1 | A | 1 | 24A9144A | Central Membrane | Clevis,Spoke,Nipple,Strongback,Jig &Pin |
| TPC333-D-1 | A | 1 | 24A9264A | Central Membrane | Ring Mount & Threaded Insert |
| TPC334-D-1 | A | 1 | 24A9244A | Central Membrane | Reinforcement Ring |
| TPC423-B-1 | | 1 | 24A6542 | Sector Cooling Manifold | FEE Bracket Extrusion II |
| TPC424-B-1 | | 1 | 24A6552 | Sector Cooling Manifold | FEE Bracket II |
| TPC506-E-1 | A | 1 | 24A8066A | Sector Support (Wheel) | Support Bracket |
| TPC507-D-1 | A | 1 | 24A 8654A | Sector Support (Wheel) | Height Adjustment Nut |
| TPC508-D-1 | A | 1 | 24A 8614A | Sector Support (Wheel) | NEMA Insulation Sheet |
| TPC511-D-1 | A | 1 | 24A9174A | Sector Support (Wheel) | V-Hole Cover Plate |
| TPC512-D-1 | A | 1 | 24A8634A | Sector Support (Wheel) | Bracket Attachment Hardware |

STAR Drawing Number Summary Report

| STAR Drawing # | Rev | Pg | Inst. Drawing # | Title Line 2 | Title Line 3 |
|----------------|-----|----|-----------------|---------------------|--|
| TPC548-D-1 | A | 1 | 24A8844A | Laser Raft | Laser Raft and Tooling Drawing Structure |
| TPC575-D-1 | A | 1 | 21F00114A | Gas System | Feedthru & Tee |
| TPC576-D-1 | A | 1 | 21F0084A | Gas System | Weldment-Assembly |
| TPC577-D-1 | A | 1 | 21F0094A | Gas System | Pipe Manifold` |
| TPC578-D-1 | A | 1 | 21F0104A | Gas System | Manifold Flange, Cover & Wheel Flange |
| TPC579-D-1 | A | 1 | 21F0124A | Gas System | Gas Manifold Braze Assembly 1 |
| TPC580-D-1 | A | 1 | 21F0134A | Gas System | Gas Manifold Braze Assembly 2 & 3 |
| TPC581-D-1 | A | 1 | 21F0144A | Gas System | Gas Manifold Flanges |
| TPC750-E-1 | A | 1 | 24A7606B | TPC Assemble & Test | Sector Mounting Tool Assembly |
| TPC751-B-1 | B | 1 | 24A7612B | TPC Assemble & Test | SMT - Worm Gear 1 |
| TPC752-A-1 | A | 1 | 24A7621A | TPC Assemble & Test | SMT - Bearing Sleeve |
| TPC753-C-1 | B | 1 | 24A7633B | TPC Assemble & Test | SMT - Pillow Block |
| TPC754-D-1 | A | 1 | 24A8244A | TPC Assemble & Test | SMT - Components |
| TPC755-D-1 | A | 1 | 24A7654B | TPC Assemble & Test | SMT - Inner Tube |
| TPC756-B-1 | A | 1 | 24A7662A | TPC Assemble & Test | SMT - Bearing Retainer |
| TPC757-E-1 | C | 1 | 24A7676C | TPC Assemble & Test | SMT - Tube Mount |
| TPC758-A-1 | A | 1 | 24A7681A | TPC Assemble & Test | SMT - Gearbox Plug |
| TPC759-C-1 | A | 1 | 24A7693A | TPC Assemble & Test | SMT - Gearbox Face |
| TPC760-D-1 | A | 1 | 24A7704B | TPC Assemble & Test | SMT - Geartrain Housing Cover |
| TPC761-D-1 | B | 1 | 24A7714B | TPC Assemble & Test | SMT - Geartrain Housing |
| TPC762-E-1 | B | 1 | 24A7726B | TPC Assemble & Test | SMT - Gearbox |
| TPC763-A-1 | A | 1 | 24A7731A | TPC Assemble & Test | SMT - Bushing |
| TPC764-B-1 | A | 1 | 24A7742A | TPC Assemble & Test | SMT - Gearbox Cover |
| TPC765-A-1 | A | 1 | 24A7751A | TPC Assemble & Test | SMT - Spacer Bushing |
| TPC766-A-1 | A | 1 | 24A7761A | TPC Assemble & Test | SMT - Idler Shaft |
| TPC767-A-1 | B | 1 | 24A7771B | TPC Assemble & Test | SMT - Platen Shaft |
| TPC768-B-1 | C | 1 | 24A7782C | TPC Assemble & Test | SMT - Shaft 1 |
| TPC769-A-1 | B | 1 | 24A9861B | TPC Assemble & Test | SMT - Worm Gear 2 |
| TPC770-C-1 | B | 1 | 24A7803B | TPC Assemble & Test | SMT - Offset Tube |
| TPC771-A-1 | A | 1 | 24A7791B | TPC Assemble & Test | SMT - Platen Shaft Right Spacer |
| TPC772-A-1 | B | 1 | 24A7821B | TPC Assemble & Test | SMT - Shaft 4 |
| TPC773-A-1 | B | 1 | 24A7831B | TPC Assemble & Test | SMT - Shaft 2 |
| TPC774-A-1 | A | 1 | 24A7971B | TPC Assemble & Test | SMT - Platen Shaft Left Spacer |
| TPC775-E-1 | A | 1 | 24A7856E | TPC Assemble & Test | SMT - Mounting Flange, Inner Sector |
| TPC776-E-1 | A | 1 | 24A7866B | TPC Assemble & Test | SMT - Rail Support |
| TPC777-D-1 | A | 1 | 24A7874A | TPC Assemble & Test | SMT - Vertical Support Extension |
| TPC778-D-1 | A | 1 | 24A7884A | TPC Assemble & Test | SMT - Vertical Support Anchor Spool |
| TPC779-D-1 | A | 1 | 24A7894A | TPC Assemble & Test | SMT - Vertical Support Base |
| TPC780-E-1 | A | 1 | 24A9846B | TPC Assemble & Test | SMT - Spider Double Leg, Outer Sector |
| TPC781-D-1 | B | 1 | 24A9854B | TPC Assemble & Test | SMT - Spider Single Leg, Outer Sector |
| TPC782-D-1 | A | 1 | 21F0274A | TPC Assemble & Test | SMT - Lifting Beam Stabilizer |
| TPC783-C-1 | B | 1 | 24A7983B | TPC Assemble & Test | SMT - Spider Standoff |
| TPC784-D-1 | A | 1 | 24A7944B | TPC Assemble & Test | SMT - Adjusting Leg |
| TPC785-D-1 | A | 1 | 24A7954A | TPC Assemble & Test | SMT - Rigid Base |
| TPC786-B-1 | A | 1 | 24A9872A | TPC Assemble & Test | SMT - Spider Flange |
| TPC787-D-1 | B | 1 | 24A9884B | TPC Assemble & Test | SMT - Spider Single Leg, Inner Sector |
| TPC788-E-1 | A | 1 | 24A9896A | TPC Assemble & Test | SMT - Spider Double Leg, Inner Sector |
| TPC789-A-1 | A | 1 | 24A8201B | TPC Assemble & Test | SMT - Gear Spacer |

STAR Drawing Number Summary Report

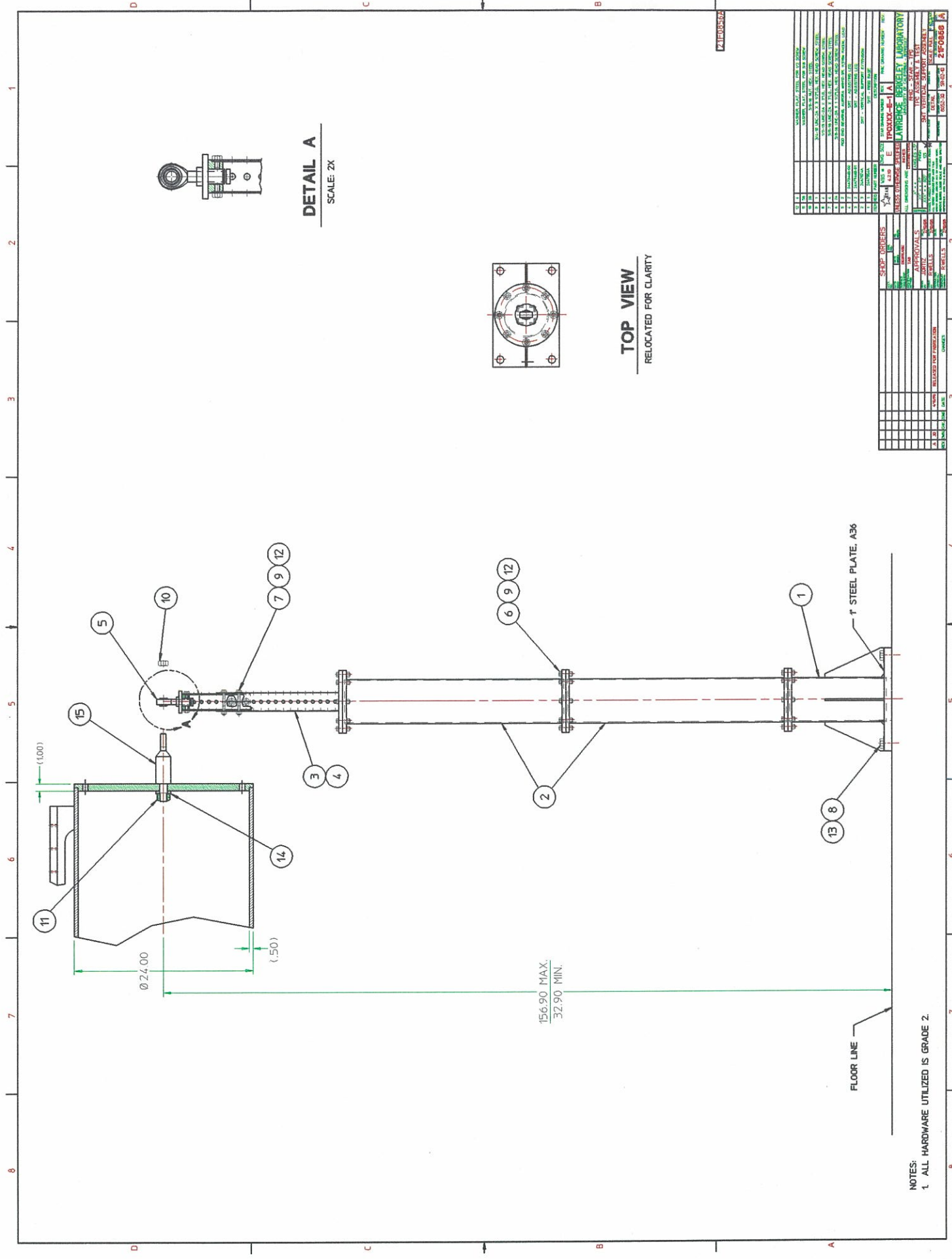
| STAR Drawing # | Rev | Pg | Inst. Drawing # | Title Line 2 | Title Line 3 |
|----------------|-----|----|-----------------|---------------------|------------------------------|
| TPC790-D-1 | A | 1 | 21F0284A | TPC Assemble & Test | SMT - Lifting Beam Assembly |
| TPC791-E-1 | A | 1 | 24A9836C | TPC Assemble & Test | SMT - Outer Sector Plate |
| TPC792-D-1 | A | 1 | 21F0294A | TPC Assemble & Test | SMT - Outer Sector Set Plate |
| TPC793-D-1 | A | 1 | 21F0264A | TPC Assemble & Test | SMT - Inner Sector Set Plate |
| TPC794-C-1 | A | 1 | 24A7643A | TPC Assemble & Test | SMT - Tube Plug Adapter 2 |
| TPC795-E-1 | A | 1 | 24A9046A | TPC Assemble & Test | SMT - Drawing Tree |
| TPC796-E-1 | A | 1 | 24A9376A | TPC Assemble & Test | TPC Cross Section |

STAR Drawing Number Summary Report

| STAR Drawing # | Rev | Pg | Inst. Drawing # | Title Line 2 | Title Line 3 |
|----------------|-----|----|-----------------|---------------------|---------------------------------------|
| TPC750-E-1 | A | 1 | 24A7606B | TPC Assemble & Test | Sector Mounting Tool Assembly |
| TPC751-B-1 | B | 1 | 24A7612B | TPC Assemble & Test | SMT - Worm Gear 1 |
| TPC752-A-1 | A | 1 | 24A7621A | TPC Assemble & Test | SMT - Bearing Sleeve |
| TPC753-C-1 | B | 1 | 24A7633B | TPC Assemble & Test | SMT - Pillow Block |
| TPC754-D-1 | A | 1 | 24A8244A | TPC Assemble & Test | SMT - Components |
| TPC755-D-1 | A | 1 | 24A7654B | TPC Assemble & Test | SMT - Inner Tube |
| TPC756-B-1 | A | 1 | 24A7662A | TPC Assemble & Test | SMT - Bearing Retainer |
| TPC757-E-1 | C | 1 | 24A7676C | TPC Assemble & Test | SMT - Tube Mount |
| TPC758-A-1 | A | 1 | 24A7681A | TPC Assemble & Test | SMT - Gearbox Plug |
| TPC759-C-1 | A | 1 | 24A7693A | TPC Assemble & Test | SMT - Gearbox Face |
| TPC760-D-1 | A | 1 | 24A7704B | TPC Assemble & Test | SMT - Geartrain Housing Cover |
| TPC761-D-1 | B | 1 | 24A7714B | TPC Assemble & Test | SMT - Geartrain Housing |
| TPC762-E-1 | B | 1 | 24A7726B | TPC Assemble & Test | SMT - Gearbox |
| TPC763-A-1 | A | 1 | 24A7731A | TPC Assemble & Test | SMT - Bushing |
| TPC764-B-1 | A | 1 | 24A7742A | TPC Assemble & Test | SMT - Gearbox Cover |
| TPC765-A-1 | A | 1 | 24A7751A | TPC Assemble & Test | SMT - Spacer Bushing |
| TPC766-A-1 | A | 1 | 24A7761A | TPC Assemble & Test | SMT - Idler Shaft |
| TPC767-A-1 | B | 1 | 24A7771B | TPC Assemble & Test | SMT - Platen Shaft |
| TPC768-B-1 | C | 1 | 24A7782C | TPC Assemble & Test | SMT - Shaft 1 |
| TPC769-A-1 | B | 1 | 24A9861B | TPC Assemble & Test | SMT - Worm Gear 2 |
| TPC770-C-1 | B | 1 | 24A7803B | TPC Assemble & Test | SMT - Offset Tube |
| TPC771-A-1 | A | 1 | 24A7791B | TPC Assemble & Test | SMT - Platen Shaft Right Spacer |
| TPC772-A-1 | B | 1 | 24A7821B | TPC Assemble & Test | SMT - Shaft 4 |
| TPC773-A-1 | B | 1 | 24A7831B | TPC Assemble & Test | SMT - Shaft 2 |
| TPC774-A-1 | A | 1 | 24A7971B | TPC Assemble & Test | SMT - Platen Shaft Left Spacer |
| TPC775-E-1 | A | 1 | 24A7856E | TPC Assemble & Test | SMT - Mounting Flange, Inner Sector |
| TPC776-E-1 | A | 1 | 24A7866B | TPC Assemble & Test | SMT - Rail Support |
| TPC777-D-1 | A | 1 | 24A7874A | TPC Assemble & Test | SMT - Vertical Support Extension |
| TPC778-D-1 | A | 1 | 24A7884A | TPC Assemble & Test | SMT - Vertical Support Anchor Spool |
| TPC779-D-1 | A | 1 | 24A7894A | TPC Assemble & Test | SMT - Vertical Support Base |
| TPC780-E-1 | A | 1 | 24A9846B | TPC Assemble & Test | SMT - Spider Double Leg, Outer Sector |
| TPC781-D-1 | B | 1 | 24A9854B | TPC Assemble & Test | SMT - Spider Single Leg, Outer Sector |
| TPC782-D-1 | A | 1 | 21F0274A | TPC Assemble & Test | SMT - Lifting Beam Stabilizer |
| TPC783-C-1 | B | 1 | 24A7983B | TPC Assemble & Test | SMT - Spider Standoff |
| TPC784-D-1 | A | 1 | 24A7944B | TPC Assemble & Test | SMT - Adjusting Leg |
| TPC785-D-1 | A | 1 | 24A7954A | TPC Assemble & Test | SMT - Rigid Base |
| TPC786-B-1 | A | 1 | 24A9872A | TPC Assemble & Test | SMT - Spider Flange |
| TPC787-D-1 | B | 1 | 24A9884B | TPC Assemble & Test | SMT - Spider Single Leg, Inner Sector |
| TPC788-E-1 | A | 1 | 24A9896A | TPC Assemble & Test | SMT - Spider Double Leg, Inner Sector |
| TPC789-A-1 | A | 1 | 24A8201B | TPC Assemble & Test | SMT - Gear Spacer |
| TPC790-D-1 | A | 1 | 21F0284A | TPC Assemble & Test | SMT - Lifting Beam Assembly |
| TPC791-E-1 | A | 1 | 24A9836C | TPC Assemble & Test | SMT - Outer Sector Plate |
| TPC792-D-1 | A | 1 | 21F0294A | TPC Assemble & Test | SMT - Outer Sector Set Plate |
| TPC793-D-1 | A | 1 | 21F0264A | TPC Assemble & Test | SMT - Inner Sector Set Plate |
| TPC794-C-1 | A | 1 | 24A7643A | TPC Assemble & Test | SMT - Tube Plug Adapter 2 |
| TPC795-E-1 | A | 1 | 24A9046A | TPC Assemble & Test | SMT - Drawing Tree |
| TPC796-E-1 | A | 1 | 24A9376A | TPC Assemble & Test | TPC Cross Section |
| TPC797 | | | | TPC Assemble & Test | |

STAR Drawing Number Summary Report

| STAR Drawing # | Rev | Pg | Inst. Drawing # | Title Line 2 | Title Line 3 |
|----------------|-----|----|-----------------|---------------------|--------------|
| TPC798 | | | | TPC Assemble & Test | |
| TPC799 | | | | TPC Assemble & Test | |



DETAIL A
SCALE: 2X

TOP VIEW
RELOCATED FOR CLARITY

NOTES:
1. ALL HARDWARE UTILIZED IS GRADE 2.

| NO. | REV. | DATE | DESCRIPTION |
|-----|------|----------|------------------------|
| 1 | 1 | 10/15/03 | ISSUED FOR FABRICATION |
| 2 | 1 | 10/15/03 | ISSUED FOR FABRICATION |
| 3 | 1 | 10/15/03 | ISSUED FOR FABRICATION |
| 4 | 1 | 10/15/03 | ISSUED FOR FABRICATION |
| 5 | 1 | 10/15/03 | ISSUED FOR FABRICATION |
| 6 | 1 | 10/15/03 | ISSUED FOR FABRICATION |
| 7 | 1 | 10/15/03 | ISSUED FOR FABRICATION |
| 8 | 1 | 10/15/03 | ISSUED FOR FABRICATION |
| 9 | 1 | 10/15/03 | ISSUED FOR FABRICATION |
| 10 | 1 | 10/15/03 | ISSUED FOR FABRICATION |
| 11 | 1 | 10/15/03 | ISSUED FOR FABRICATION |
| 12 | 1 | 10/15/03 | ISSUED FOR FABRICATION |
| 13 | 1 | 10/15/03 | ISSUED FOR FABRICATION |
| 14 | 1 | 10/15/03 | ISSUED FOR FABRICATION |
| 15 | 1 | 10/15/03 | ISSUED FOR FABRICATION |

| NO. | REV. | DATE | DESCRIPTION |
|-----|------|----------|------------------------|
| 1 | 1 | 10/15/03 | ISSUED FOR FABRICATION |
| 2 | 1 | 10/15/03 | ISSUED FOR FABRICATION |
| 3 | 1 | 10/15/03 | ISSUED FOR FABRICATION |
| 4 | 1 | 10/15/03 | ISSUED FOR FABRICATION |
| 5 | 1 | 10/15/03 | ISSUED FOR FABRICATION |
| 6 | 1 | 10/15/03 | ISSUED FOR FABRICATION |
| 7 | 1 | 10/15/03 | ISSUED FOR FABRICATION |
| 8 | 1 | 10/15/03 | ISSUED FOR FABRICATION |
| 9 | 1 | 10/15/03 | ISSUED FOR FABRICATION |
| 10 | 1 | 10/15/03 | ISSUED FOR FABRICATION |
| 11 | 1 | 10/15/03 | ISSUED FOR FABRICATION |
| 12 | 1 | 10/15/03 | ISSUED FOR FABRICATION |
| 13 | 1 | 10/15/03 | ISSUED FOR FABRICATION |
| 14 | 1 | 10/15/03 | ISSUED FOR FABRICATION |
| 15 | 1 | 10/15/03 | ISSUED FOR FABRICATION |

| NO. | REV. | DATE | DESCRIPTION |
|-----|------|----------|------------------------|
| 1 | 1 | 10/15/03 | ISSUED FOR FABRICATION |
| 2 | 1 | 10/15/03 | ISSUED FOR FABRICATION |
| 3 | 1 | 10/15/03 | ISSUED FOR FABRICATION |
| 4 | 1 | 10/15/03 | ISSUED FOR FABRICATION |
| 5 | 1 | 10/15/03 | ISSUED FOR FABRICATION |
| 6 | 1 | 10/15/03 | ISSUED FOR FABRICATION |
| 7 | 1 | 10/15/03 | ISSUED FOR FABRICATION |
| 8 | 1 | 10/15/03 | ISSUED FOR FABRICATION |
| 9 | 1 | 10/15/03 | ISSUED FOR FABRICATION |
| 10 | 1 | 10/15/03 | ISSUED FOR FABRICATION |
| 11 | 1 | 10/15/03 | ISSUED FOR FABRICATION |
| 12 | 1 | 10/15/03 | ISSUED FOR FABRICATION |
| 13 | 1 | 10/15/03 | ISSUED FOR FABRICATION |
| 14 | 1 | 10/15/03 | ISSUED FOR FABRICATION |
| 15 | 1 | 10/15/03 | ISSUED FOR FABRICATION |

24 A 760 6 A SR102110 ASSY 7/1/97

DRAWING NUMBER 2-7

SIZE 8

REV. 9

CATEGORY 10-15

TYPE 16

DATE 17-20

DRAWING RECORD
MECHANICAL ENGINEERING
BERKELEY

RHIC-STAR-TPC TPC ASSEMBLE & TEST
TITLE: SECTOR MOUNTING TOOL ASSY

21

80

SHOWN ON:

OTHER CATEGORY CODES

SR102110

A. RAWLINS/D. ORTIZ
DESIGNER



DRAFTSMAN

RL-3612-1 (REV. 7/92)

☆ U.S. GPO:1992-687-784

24 A 761 2 A SR102110 DETAIL 9/8/94

DRAWING NUMBER 2-7

SIZE 8

REV. 9

CATEGORY 10-15

TYPE 16

DATE 17-20

DRAWING RECORD
MECHANICAL ENGINEERING
BERKELEY

RHIC-STAR-TPC TPC ASSEMBLE & TEST
TITLE: SMT-WORM GEAR 1

21

80

SHOWN ON:

OTHER CATEGORY CODES

24A7606

SR102110

A. RAWLINS/D. ORTIZ
DESIGNER



DRAFTSMAN

RL-3612-1 (REV. 7/92)

☆ U.S. GPO:1992-687-784

24 A 762 1 A SR102110 DETAIL 9/2/94

DRAWING NUMBER 2-7

SIZE 8

REV. 9

CATEGORY 10-15

TYPE 16

DATE 17-20

DRAWING RECORD
MECHANICAL ENGINEERING
BERKELEY

RHIC-STAR-TPC TPC ASSEMBLE & TEST
TITLE: SMT-BEARING SLEEVE

21

80

SHOWN ON:

OTHER CATEGORY CODES

24A7606A

SR102110

I. AMERMAN
DESIGNER



DRAFTSMAN

RL-3612-1 (REV. 7/92)

☆ U.S. GPO:1992-687-784

24 A 763 B A SR0210 DETAIL 8/15/97

DRAWING NUMBER 2-7

SIZE 8

REV. 9

CATEGORY 10-15

TYPE 16

DATE 17-20

DRAWING RECORD
MECHANICAL ENGINEERING
BERKELEY

RHIC-STAR-TPC TPC ASSEMBLE & TEST
TITLE: SMT-BEARING BLOCK

21

80

SHOWN ON:

OTHER CATEGORY CODES

24A7606A

SR0210

I. AMERMAN/J. ORTIZ

DESIGNER



DRAFTSMAN

RL-3612-1 (REV. 7/92)

☆ U.S. GPO:1992-687-784

24 A 764 3 A SR0210 DET. 4/18/97

DRAWING NUMBER 2-7

SIZE 8

REV. 9

CATEGORY 10-15

TYPE 16

DATE 17-20

DRAWING RECORD
MECHANICAL ENGINEERING
BERKELEY

RHIC-STAR-TPC TPC ASSEMBLE & TEST
TITLE:

21

SMT-TUBE PLUG ADAPTOR 2

80

SHOWN ON:

OTHER CATEGORY CODES

24A7944

SR0210

John Ortiz

DESIGNER



DRAFTSMAN

RL-3612-1 (REV. 7/92)

☆ U.S. GPO:1992-687-784

24 A 765 4 A SR0210 DET. 9/8/9A

DRAWING NUMBER 2-7

SIZE 8

REV. 9

CATEGORY 10-15

TYPE 16

DATE 17-20

DRAWING RECORD
MECHANICAL ENGINEERING
BERKELEY

RHIC-STAR-TPC TPC ASSEMBLE & TEST
TITLE:

SMT-INNER TUBE

21

80

SHOWN ON:

OTHER CATEGORY CODES

24A7606A

SR0210

L. AMERMAN

DESIGNER



DRAFTSMAN

RL-3612-1 (REV. 7/92)

☆ U.S. GPO:1992-687-784

24 A 766 2 A SR0210 DET 9/8/94

DRAWING NUMBER 2-7

SIZE 8

REV. 9

CATEGORY 10-15

TYPE 16

DATE 17-20

DRAWING RECORD
MECHANICAL ENGINEERING
BERKELEY

RHIC-STAR-TPC TPC ASSEMBLE & TEST

TITLE SMT-BEARING RETAINER

21

80

SHOWN ON:

OTHER CATEGORY CODES

2AA7606A

SR0210

L. AMERMAN/J. ORTIZ

DESIGNER



DRAFTSMAN

RL-3612-1 (REV. 7/92)

☆ U.S. GPO:1992-687-784

24 A 768 1 A SR0210 DET 9/8/94

DRAWING NUMBER 2-7

SIZE 8

REV. 9

CATEGORY 10-15

TYPE 16

DATE 17-20

DRAWING RECORD
MECHANICAL ENGINEERING
BERKELEY

RHIC-STAR-TPC TPC ASSEMBLE & TEST

TITLE SMT-GEAR BOX PLUG

21

80

SHOWN ON:

OTHER CATEGORY CODES

2AA7606

SR0210

L. AMERMAN

DESIGNER



DRAFTSMAN

RL-3612-1 (REV. 7/92)

☆ U.S. GPO:1992-687-784

24 A 769 3 A SR0210 DET 9/2/94

DRAWING NUMBER 2-7

SIZE 8

REV. 9

CATEGORY 10-15

TYPE 16

DATE 17-20

DRAWING RECORD
MECHANICAL ENGINEERING
BERKELEY

RHIC-STAR-TPC TPC ASSEMBLE & TEST

TITLE SMT-GEAR BOX FACE

21

80

SHOWN ON:

OTHER CATEGORY CODES

2AA7606

SR0210

L. AMERMAN/J. ORTIZ

DESIGNER



DRAFTSMAN

RL-3612-1 (REV. 7/92)

☆ U.S. GPO:1992-687-784

24 A 770 4 B SR10210 DETAIL 9/6/94

DRAWING NUMBER 2-7

SIZE 8

REV. 9

CATEGORY 10-15

TYPE 16

DATE 17-20

DRAWING RECORD
MECHANICAL ENGINEERING
BERKELEY

RHIC-STAR-TPC TPC ASSEMBLE & TEST

TITLE: SMT-GEAR TRAIN HOUSING 1 IS

21

80

SHOWN ON:

OTHER CATEGORY CODES

24A7606

SR10210

L. AMERMAN / J. ORTIZ

DESIGNER



DRAFTSMAN

RL-3612-1 (REV. 7/92)

☆ U.S. GPO:1992-687-784

24 A 771 4 A SR10210 DETAIL 9/6/94

DRAWING NUMBER 2-7

SIZE 8

REV. 9

CATEGORY 10-15

TYPE 16

DATE 17-20

DRAWING RECORD
MECHANICAL ENGINEERING
BERKELEY

RHIC-STAR-TPC TPC ASSEMBLE & TEST

TITLE: SMT-GEAR TRAIN HOUSING 2 IS

21

80

SHOWN ON:

OTHER CATEGORY CODES

SR10210

L. AMERMAN / J. ORTIZ

DESIGNER



DRAFTSMAN

RL-3612-1 (REV. 7/92)

☆ U.S. GPO:1992-687-784

24 A 772 6 A SR10210 DETAIL 9/8/94

DRAWING NUMBER 2-7

SIZE 8

REV. 9

CATEGORY 10-15

TYPE 16

DATE 17-20

DRAWING RECORD
MECHANICAL ENGINEERING
BERKELEY

RHIC-STAR-TPC TPC ASSEMBLE & TEST

TITLE: SMT-GEARBOX

21

80

SHOWN ON:

OTHER CATEGORY CODES

SR10210

L. AMERMAN / J. ORTIZ

DESIGNER



DRAFTSMAN

RL-3612-1 (REV. 7/92)

☆ U.S. GPO:1992-687-784

24 A 773 1 A SR 02 10 DETAIL 9/30/94

DRAWING NUMBER 2-7 SIZE 8 REV. 9 CATEGORY 10-15 TYPE 16 DATE 17-20

DRAWING RECORD
MECHANICAL ENGINEERING
BERKELEY

RHIC-STAR-TPC TPC ASSEMBLE & TEST

TITLE: SMT-BUSHING
21

SHOWN ON: OTHER CATEGORY CODES

ZAA7606 SR 02 10

L. Amerman
DESIGNER



DRAFTSMAN

RL-3612-1 (REV. 7/92)

☆ U.S. GPO:1992-687-784

24 A 774 2 A SR 02 10 DET. 8/2/94

DRAWING NUMBER 2-7 SIZE 8 REV. 9 CATEGORY 10-15 TYPE 16 DATE 17-20

DRAWING RECORD
MECHANICAL ENGINEERING
BERKELEY

RHIC-STAR-TPC TPC ASSEMBLE & TEST

TITLE: SMT-GEARBOX COVER
21

SHOWN ON: OTHER CATEGORY CODES

ZAA7606 SR 02 10

L. AMERMAN
DESIGNER



DRAFTSMAN

RL-3612-1 (REV. 7/92)

☆ U.S. GPO:1992-687-784

24 A 775 1 A SR 02 10 DETAIL 4/30/97

DRAWING NUMBER 2-7 SIZE 8 REV. 9 CATEGORY 10-15 TYPE 16 DATE 17-20

DRAWING RECORD
MECHANICAL ENGINEERING
BERKELEY

TITLE: RHIC-STAR-TPC TPC ASSEMBLE & TEST

SMT-SPACER BUSHING
21

SHOWN ON: OTHER CATEGORY CODES

ZAA7606 SR 02 10

John O'Keefe
DESIGNER



DRAFTSMAN

RL-3612-1 (REV. 7/92)

☆ U.S. GPO:1992-687-784

24 A 776 1 A SR102110 Detail 9/6/94
DRAWING NUMBER 2-7 SIZE 8 REV. 9 CATEGORY 10-15 TYPE 16 DATE 17-20

DRAWING RECORD
MECHANICAL ENGINEERING
BERKELEY

RHIC-STAR-TPC TPC ASSEMBLE & TEST
TITLE: SMT- IDLER SHAFT

21

80

SHOWN ON:

OTHER CATEGORY CODES

2AA7600

SR102110

L. AMERMAN

DESIGNER



DRAFTSMAN

RL-3612-1 (REV. 7/92)

☆ U.S. GPO:1992-687-784

24 A 777 1 A SR102110 Detail 9/8/94
DRAWING NUMBER 2-7 SIZE 8 REV. 9 CATEGORY 10-15 TYPE 16 DATE 17-20

DRAWING RECORD
MECHANICAL ENGINEERING
BERKELEY

RHIC-STAR-TPC TPC ASSEMBLE & TEST
TITLE: SMT- PLATEN SHAFT

21

80

SHOWN ON:

OTHER CATEGORY CODES

2AA7600

SR102110

L. AMERMAN/J. ORTIZ

DESIGNER



DRAFTSMAN

RL-3612-1 (REV. 7/92)

☆ U.S. GPO:1992-687-784

24 A 778 2 A SR102110 Detail 9/8/94
DRAWING NUMBER 2-7 SIZE 8 REV. 9 CATEGORY 10-15 TYPE 16 DATE 17-20

DRAWING RECORD
MECHANICAL ENGINEERING
BERKELEY

RHIC-STAR-TPC TPC ASSEMBLE & TEST
TITLE: SMT - SHAFT 1

21

80

SHOWN ON:

OTHER CATEGORY CODES

2AA7600

SR102110

L. AMERMAN/J. ORTIZ

DESIGNER



DRAFTSMAN

RL-3612-1 (REV. 7/92)

☆ U.S. GPO:1992-687-784

24 A 779 3 A SR 02 10 Detail 11/30/95
DRAWING NUMBER 2-7 SIZE 8 REV. 9 CATEGORY 10-15 TYPE 16 DATE 17-20

DRAWING RECORD
MECHANICAL ENGINEERING
BERKELEY

TITLE: RHIC-STAR-TPC TPC ASSEMBLY & TEST
21
SMT-PLATEN SHAFT RIGHT SPACER 80

SHOWN ON: OTHER CATEGORY CODES

24A7606 SR 02 10

J. ORTIZ / A. RAWLINS
DESIGNER



DRAFTSMAN

RL-3612-1 (REV. 7/92)

U.S. GPO:1992-687-784

24 A 780 3 A SR 02 10 Detail
DRAWING NUMBER 2-7 SIZE 8 REV. 9 CATEGORY 10-15 TYPE 16 DATE 17-20

DRAWING RECORD
MECHANICAL ENGINEERING
BERKELEY

TITLE: RHIC-STAR-TPC TPC ASSEMBLY & TEST
21
SMT-OFFSET TUBE 80

SHOWN ON: OTHER CATEGORY CODES

24A7606 SR 02 10

John Ortiz
DESIGNER



DRAFTSMAN

RL-3612-1 (REV. 7/92)

U.S. GPO:1992-687-784

24 A 782 1 A SR 02 10 DETAIL 8-30-95
DRAWING NUMBER 2-7 SIZE 8 REV. 9 CATEGORY 10-15 TYPE 16 DATE 17-20

DRAWING RECORD
MECHANICAL ENGINEERING
BERKELEY

TITLE: RHIC-STAR-TPC TPC ASSEMBLY & TEST
21
SMT-SHAFT 4
~~Mounting Flange IS~~ 80

SHOWN ON: OTHER CATEGORY CODES

24A7606 SR 02 10

A-RAWLINS / J. ORTIZ
DESIGNER



DRAFTSMAN

RL-3612-1 (REV. 7/92)

U.S. GPO:1992-687-784

24 A 783 1 A SR 02 10 DETAIL 8-30-95

DRAWING RECORD
MECHANICAL ENGINEERING
BERKELEY

DRAWING NUMBER 2-7 SIZE 8 REV. 9 CATEGORY 10-15 TYPE 16 DATE 17-20
RHIC-STAR-TPC TPC ASSEMBLY & TEST
SMT-SHAFT 2

TITLE: ~~MOUNTING FLG. I.S.~~

21

SHOWN ON: OTHER CATEGORY CODES

24A7606 SR 02 10

A. RAWLINS/J. ORTIZ
DESIGNER



DRAFTSMAN

RL-3612-1 (REV. 7/92)

☆ U.S. GPO:1992-687-784

24 A 785 6 A SR 02 10 DETAIL 8-30-95

DRAWING RECORD
MECHANICAL ENGINEERING
BERKELEY

DRAWING NUMBER 2-7 SIZE 8 REV. 9 CATEGORY 10-15 TYPE 16 DATE 17-20
RHIC-STAR-TPC TPC ASSEMBLY & TEST

TITLE: MOUNTING FLG. I.S.

21

SHOWN ON: OTHER CATEGORY CODES

SR 02 10

A. RAWLINS/J. ORTIZ
DESIGNER



DRAFTSMAN

RL-3612-1 (REV. 7/92)

☆ U.S. GPO:1992-687-784

24 A 786 6 A SR 02 10 DETAIL 9-1-95

DRAWING RECORD
MECHANICAL ENGINEERING
BERKELEY

DRAWING NUMBER 2-7 SIZE 8 REV. 9 CATEGORY 10-15 TYPE 16 DATE 17-20
RHIC-STAR-TPC TPC ASSEMBLY & TEST

TITLE: SMT-RAIL SUPPORT

21

SHOWN ON: OTHER CATEGORY CODES

A. RAWLINS/J. ORTIZ
DESIGNER



DRAFTSMAN

RL-3612-1 (REV. 7/92)

☆ U.S. GPO:1992-687-784

24A 787 4 A SR102110 DETAIL 9-20-95
DRAWING NUMBER 2-7 SIZE 8 REV. 9 CATEGORY 10-15 TYPE 16 DATE 17-20

DRAWING RECORD
MECHANICAL ENGINEERING
BERKELEY

RHIC-STAR-TPC TPC ASSEMBLY & TEST
TITLE SMT-VERTICAL SUPPORT EXTENSION

21

SHOWN ON:

OTHER CATEGORY CODES



RL-3612-1 (REV. 7/92)

A. RAWLINS
DESIGNER

DRAFTSMAN

☆ U.S. GPO:1992-687-784

24A 788 4 A SR102110 DETAIL 9-21-95
DRAWING NUMBER 2-7 SIZE 8 REV. 9 CATEGORY 10-15 TYPE 16 DATE 17-20

DRAWING RECORD
MECHANICAL ENGINEERING
BERKELEY

RHIC-STAR-TPC TPC ASSEMBLY & TEST
TITLE SMT-VERTICAL SUPPORT ANCHOR

21

SHOWN ON:

OTHER CATEGORY CODES



RL-3612-1 (REV. 7/92)

A. RAWLINS
DESIGNER

DRAFTSMAN

☆ U.S. GPO:1992-687-784

24A 789 4 A SR102110 DETAIL 9-25-95
DRAWING NUMBER 2-7 SIZE 8 REV. 9 CATEGORY 10-15 TYPE 16 DATE 17-20

DRAWING RECORD
MECHANICAL ENGINEERING
BERKELEY

RHIC-STAR-TPC TPC ASSEMBLY & TEST
TITLE SMT-VERTICAL SUPPORT BASE

21

SHOWN ON:

OTHER CATEGORY CODES



RL-3612-1 (REV. 7/92)

A. RAWLINS
DESIGNER

DRAFTSMAN

☆ U.S. GPO:1992-687-784

24 A 794 A A SR102110 DETAIL 9-26-95
DRAWING NUMBER 2-7 SIZE 8 REV. 9 CATEGORY 10-15 TYPE 16 DATE 17-20

DRAWING RECORD
MECHANICAL ENGINEERING
BERKELEY

RHIC-STAR-TPC TPC ASSEMBLE & TEST
TITLE SMT-ADJUSTING LEG

☆ U.S. GPO:1992-687-784



RL-3612-1 (REV. 7/92)

SHOWN ON:

OTHER CATEGORY CODES

SR102110

A. PAWLINS / N. ORTIZ
DESIGNER

DRAFTSMAN

80

24 A 795 2 A SR102110 DETAIL 9-27-95
DRAWING NUMBER 2-7 SIZE 8 REV. 9 CATEGORY 10-15 TYPE 16 DATE 17-20

DRAWING RECORD
MECHANICAL ENGINEERING
BERKELEY

RHIC-STAR-TPC TPC ASSEMBLE & TEST
TITLE: SMT-RIGID BASE

☆ U.S. GPO:1992-687-784



RL-3612-1 (REV. 7/92)

SHOWN ON:

OTHER CATEGORY CODES

A. PAWLINS
DESIGNER

DRAFTSMAN

80

24 A 797 1 A SR102110 DETAIL 9-29-95
DRAWING NUMBER 2-7 SIZE 8 REV. 9 CATEGORY 10-15 TYPE 16 DATE 17-20

DRAWING RECORD
MECHANICAL ENGINEERING
BERKELEY

RHIC-STAR-TPC TPC ASSEMBLE & TEST
TITLE: SMT-PLATEN SHAFT LEFT SPACER

☆ U.S. GPO:1992-687-784



RL-3612-1 (REV. 7/92)

SHOWN ON:

OTHER CATEGORY CODES

ZAAT606 SR102110

John Ortiz
DESIGNER

DRAFTSMAN

80

24 A 983 6 A SR0210 DET 3/21/97
DRAWING NUMBER 2-7 SIZE 8 REV. 9 CATEGORY 10-15 TYPE 16 DATE 17-20

DRAWING RECORD
MECHANICAL ENGINEERING
BERKELEY

TITLE: RHIC-STAR-TPC SECTORS
21
SMT- OUTER SECTOR PLATE 80

SHOWN ON: OTHER CATEGORY CODES



John Ortiz
DESIGNER
DRAFTSMAN

RL-3612-1 (REV. 7/92)

☆ U.S. GPO:1992-687-784

24 A 986 1 A SR0210 DET 11/14/95
DRAWING NUMBER 2-7 SIZE 8 REV. 9 CATEGORY 10-15 TYPE 16 DATE 17-20

DRAWING RECORD
MECHANICAL ENGINEERING
BERKELEY

TITLE: RHIC-STAR-TPC TPC ASSEMBLY & TEST
21
SMT- WORM GEAR 2 80

SHOWN ON: OTHER CATEGORY CODES



J. ORTIZ / A. PAWLING
DESIGNER
DRAFTSMAN

RL-3612-1 (REV. 7/92)

RHIC-STAR-TPC
WORM GEAR
GPO:1992-687-784

24 A 987 2 A SR0210 DET. 4/9/97
DRAWING NUMBER 2-7 SIZE 8 REV. 9 CATEGORY 10-15 TYPE 16 DATE 17-20

DRAWING RECORD
MECHANICAL ENGINEERING
BERKELEY

TITLE: RHIC-STAR-TPC TPC ASSEMBLY & TEST
21
SMT - SPIDER FLANGE 80

SHOWN ON: OTHER CATEGORY CODES



John Ortiz
DESIGNER
DRAFTSMAN

RL-3612-1 (REV. 7/92)

SPIDER FLANGE
GPO:1992-687-784