

ITEM NO	PART NUMBER	DESCRIPTION
1	244A594	SHIELD WIRE MOUNT RIGHT, 5-10
2	244A594	INNER STAR
3	244A594	244A594
4	244A594	244A594
5	244A594	244A594
6	244A594	244A594
7	244A594	244A594
8	244A594	244A594

SECTION A-A  
SCALE 1:1

16 x 1630/41.40 = 662.43

26.080 REF 27.900 REF 708.66 REF

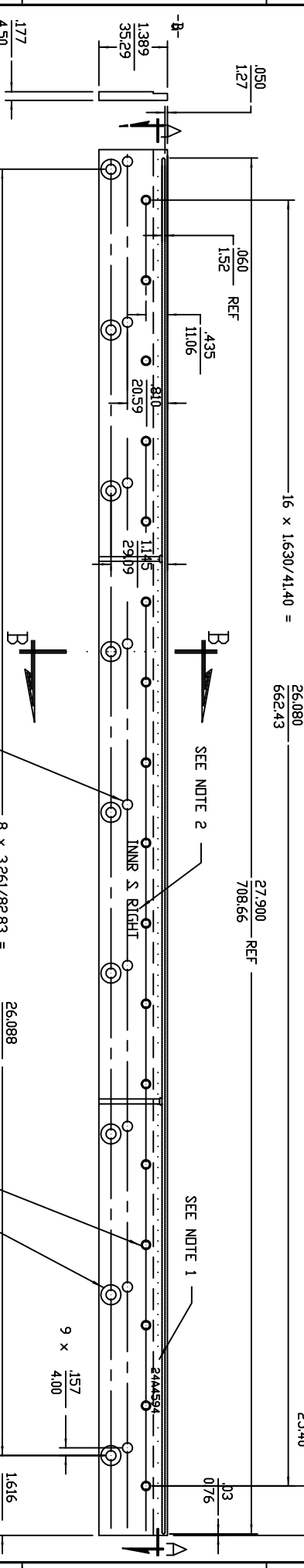
11.000 REF 279.40 REF 1.000 REF 25.40 REF

0.60 REF 1.52 REF 1.00 REF 2.54 REF 8.75 REF 222.25 REF

0.60 REF 1.52 REF 1.00 REF 2.54 REF

1.389 REF 35.28 REF

1.77 REF 4.50 REF



9 x Ø.203/5.16 THRU  
r .010/0.25 MIN

8 x 3.261/82.83 = 26.088  
r .010/0.25 MIN A B C

17 x 10-24UNC-2B TAP THRU  
r .010/0.25 MIN A B C

9 x Ø.406/10.31 x .125/3.18 DP  
r .010/0.25 MIN A B C

9 x 4.00

1.57

1.616

4.105

Ø.203

Ø.516

Ø.406

Ø.1031

1.25

3.18

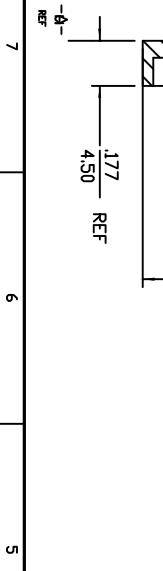
DP



NOTES

1. VERA-ETCH or ENGRAVE PART NO 244A594 IN .12/3 HIGH CHARACTERS IN LOCATION SHOWN.
2. VERA-ETCH or ENGRAVE "INNER S RIGHT" IN 2/5 CHARACTERS IN LOCATION SHOWN.
3. -REF-: MATERIAL TO BE CERTIFIED BROMINE FREE

SECTION B-B  
SCALE 4:1



REV	DATE	BY	CHK	DATE	CHANGES
A	02/08/11				ADDED STAR B
B	02/08/11				

DATE	BY	CHK	DATE	DESCRIPTION
02/08/11				ADDED STAR B

244A594