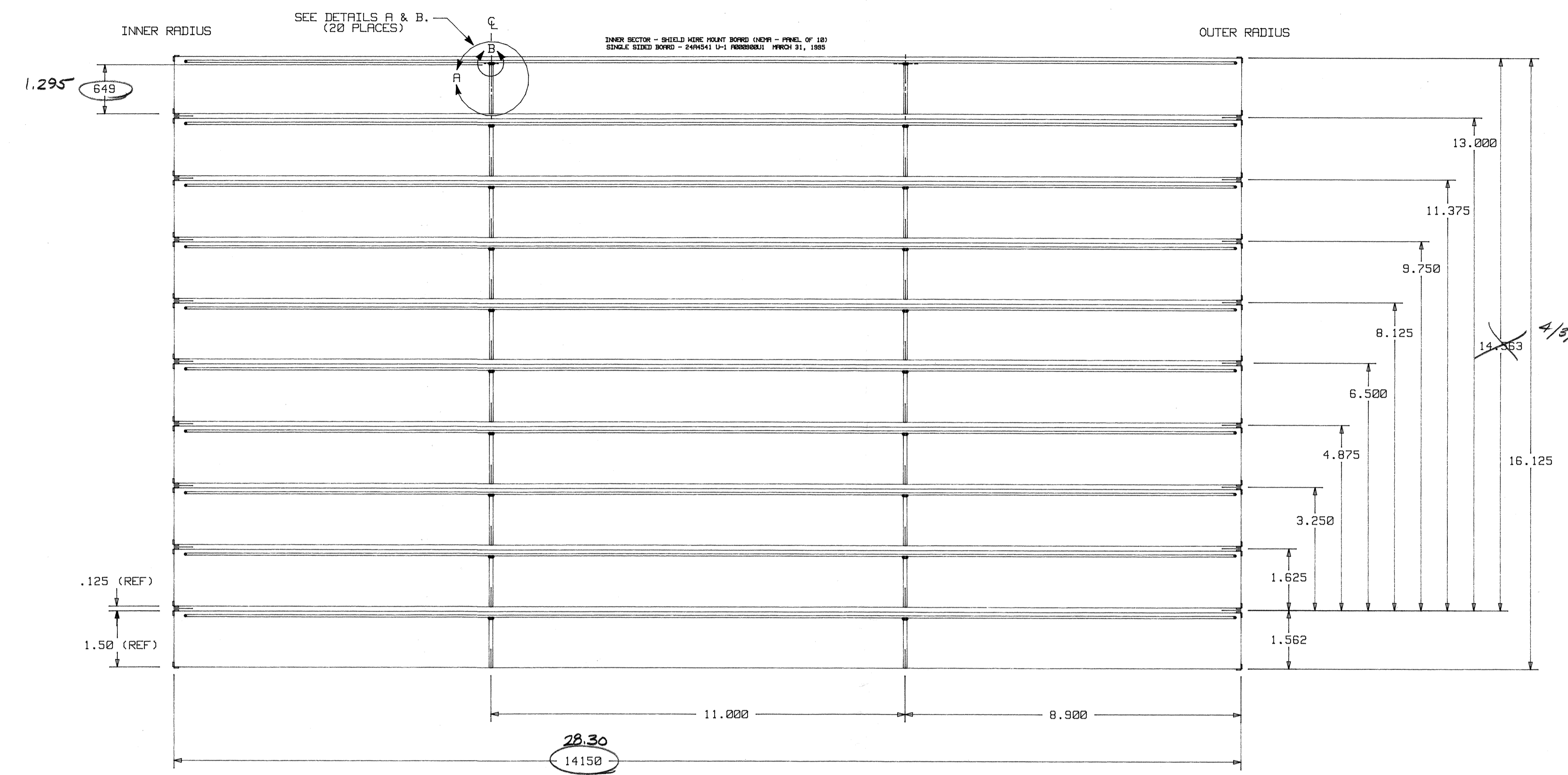
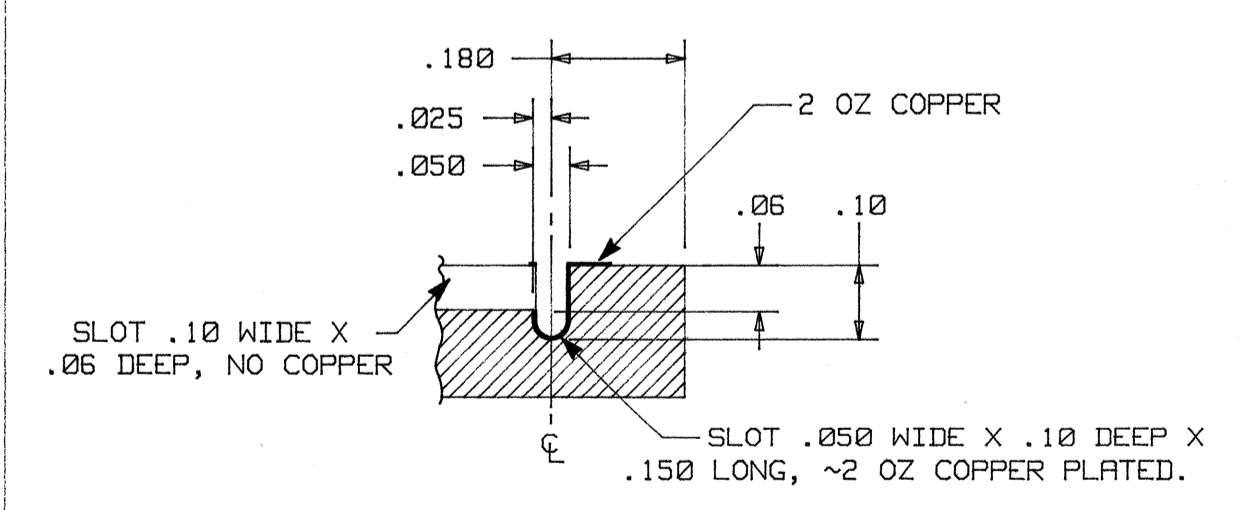


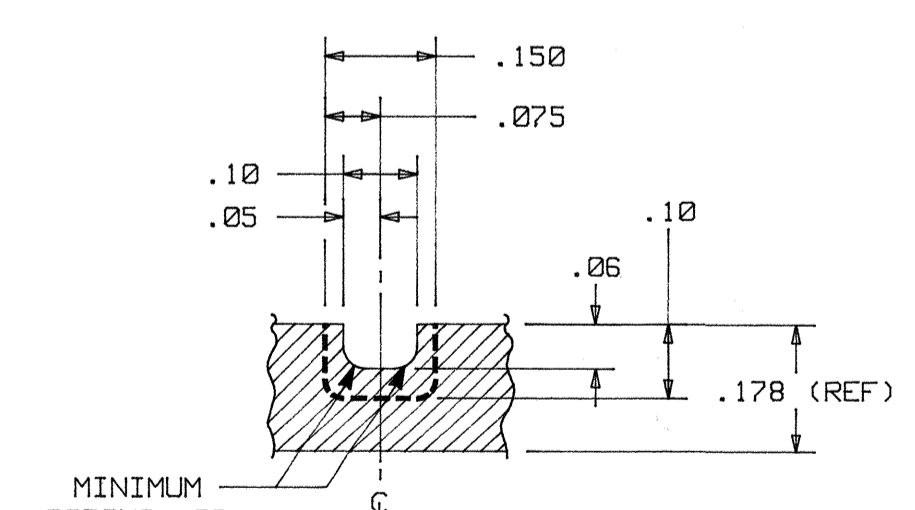
REV.	CHANGES	DRAWN	DATE	CHKD.	DATE



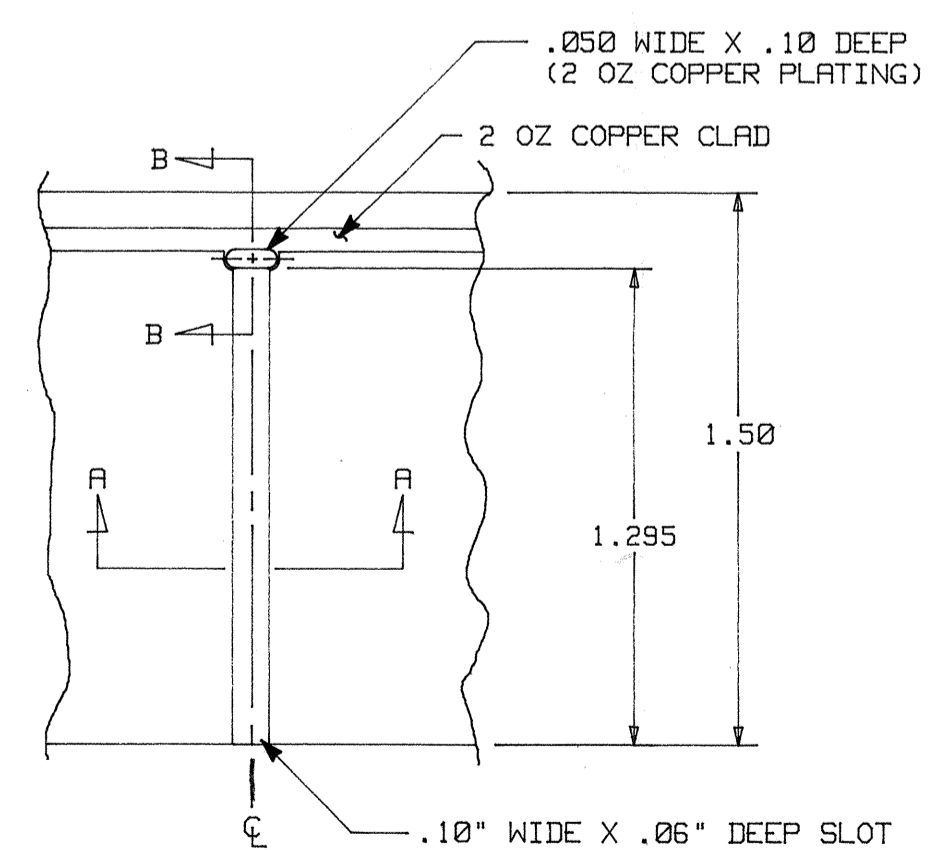
WIRE MOUNT SIDE VIEW
SCALE: ~.5:1



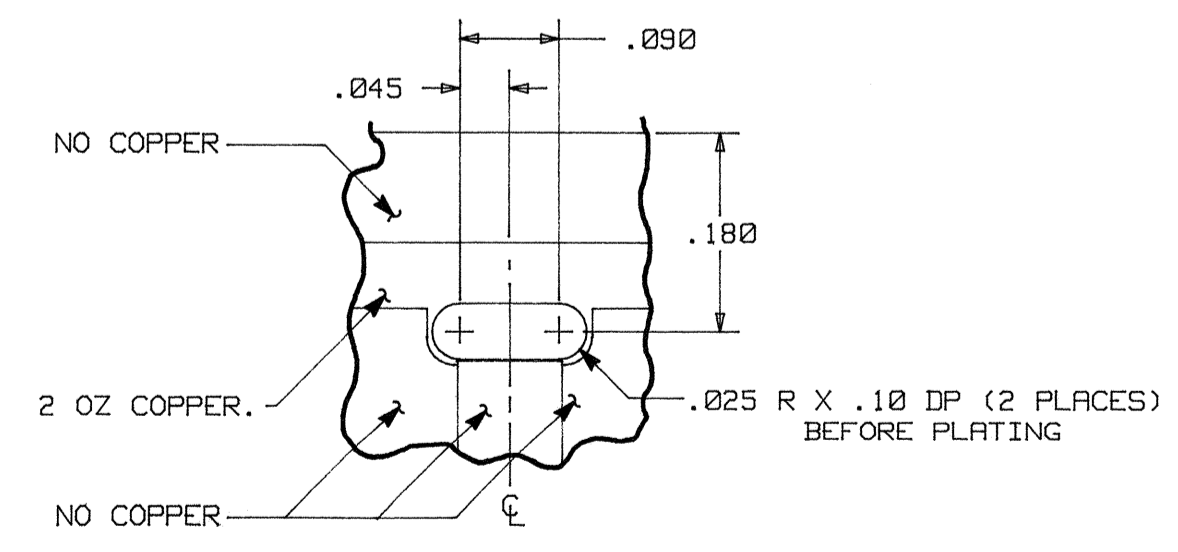
SECTION B-B
NO SCALE



SECTION A-A
NO SCALE



DETAIL A
NO SCALE



DETAIL B
NO SCALE

- NOTES:
- BOARD MATERIAL: .178 THICK NEMA G10, CERTIFIED BROMINE FREE, 2 OZ. COPPER CLAD - ONE SIDE. THERE IS NO TIN PLATING ON THIS BOARD. MATERIAL WILL BE SUPPLIED BY LBL. THIS IS A SINGLE SIDED BOARD.
 - MANUFACTURER MAY NOT PUT ANY IDENTIFICATION NOMENCLATURE ON PRINTED CIRCUIT BOARD, EITHER SIDE.
 - BOARD SIZE IS 28.50 LONG X 1.50 WIDE X .178 THICK. DIMENSIONS ARE IN INCHES. TOLERANCES ARE .XX = .015 AND .XXX = .005.
 - CREATE SLOTS BEFORE COPPER PLATING.
 - VERTICAL DIMENSIONS ARE CENTERS FOR A .125 BIT ROUTER. THIS WILL CREATE 10 INDIVIDUAL BOARD PER PANEL.
 - FINAL BOARD DIMENSIONS ARE 28.100 LONG X 1.389 WIDE X .178 THICK. SEE MECHANICAL DRAWING 24A4594 FOR INSTRUCTIONS. FINAL ROUTING WILL BE DONE BY LBL.
 - REFERENCE DRAWINGS:
24A4533 M-1 a000900m1 BOARD OUTLINE/FABRICATION (SINGLE BOARD-RIGHT, G10)
24A4594 - SHIELD WIRE MOUNT BOARD (RIGHT, G10) FINAL FAB. DWG.

D I S T		TITLE		STAR TPC	
S H O W N		INNER SECTOR ELECTRONICS		SHIELD GRID WIRE MOUNT BOARD (RIGHT, G10)	
A C C O U N T N U M B E R		8052-24		LAWRENCE BERKELEY LABORATORY	
S E R I A L N U M B E R		02/31/85		UNIVERSITY OF CALIFORNIA	
D A T E I S S U E D		NO. RECD.		OFFICE OF ELECTRONICS ENGINEERING	
E N G I N E E R		FRED BIESER		FILE NO. a000900m2	
D E L. T O		SCALE NONE		SIZE 4	
				DRAWING NO. 24A4543 M-2	
				REV. 2	
				SHEET 2 OF 2	