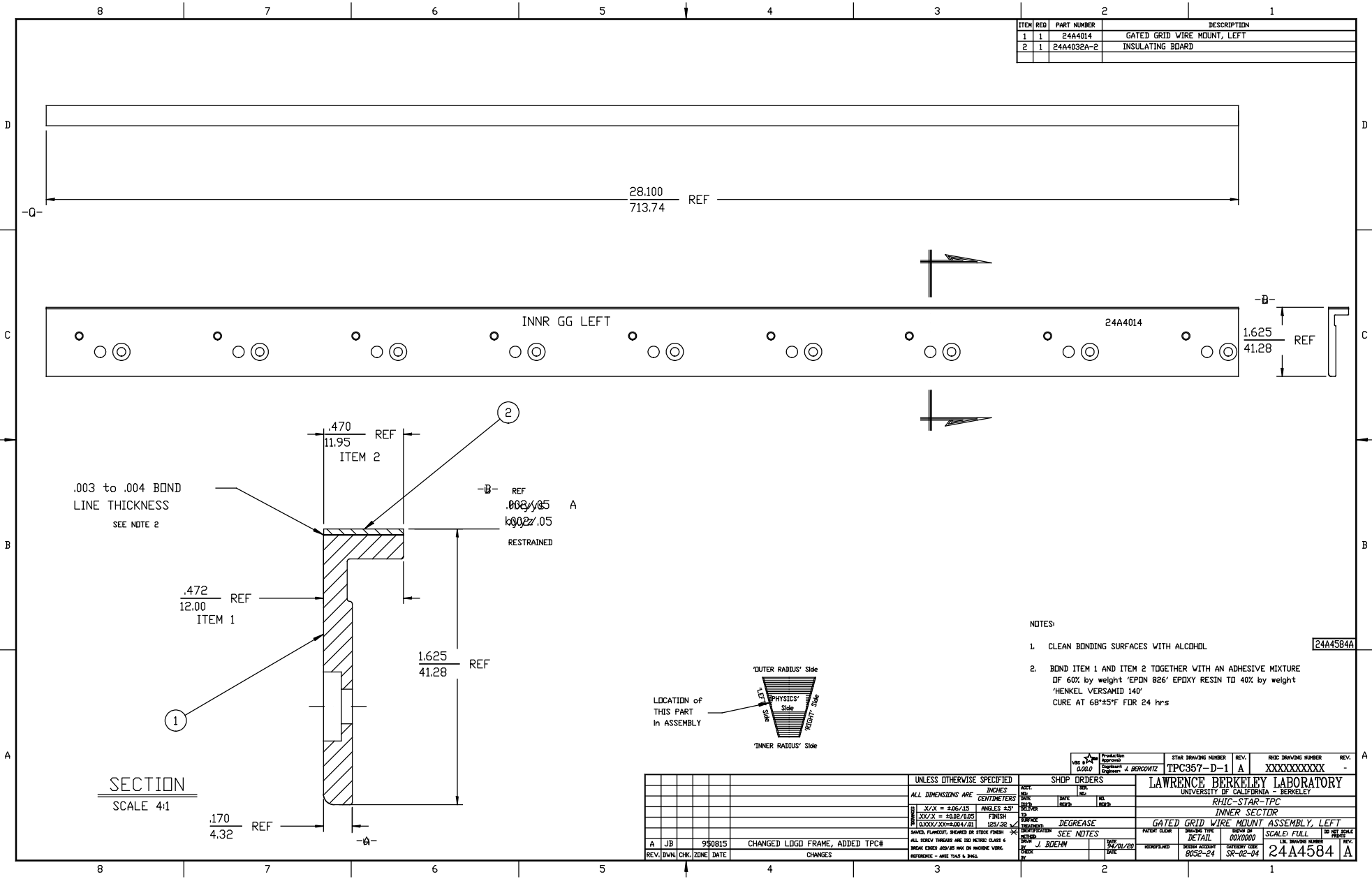


| ITEM | REV | PART NUMBER | DESCRIPTION |
|------|-----|-------------|-----------------------------|
| 1 | 1 | 24A4014 | GATED GRID WIRE MOUNT, LEFT |
| 2 | 1 | 24A4032A-2 | INSULATING BOARD |



.003 to .004 BOND
LINE THICKNESS
SEE NOTE 2

SECTION
SCALE 4:1

RESTRAINED
.003 to .004
BOND LINE THICKNESS
SEE NOTE 2

NOTES:

- CLEAN BONDING SURFACES WITH ALCOHOL
- BOND ITEM 1 AND ITEM 2 TOGETHER WITH AN ADHESIVE MIXTURE OF 60% BY WEIGHT 'EPDN 826' EPDXY RESIN TO 40% BY WEIGHT 'HENKEL VERSAMID 140' CURE AT 68°±5°F FOR 24 HRS

24A4584A

| REV. | DATE | CHK. | BY | DATE | DESCRIPTION | UNLESS OTHERWISE SPECIFIED | SHOP ORDERS | PRODUCTION APPROVAL | STAR DRAWING NUMBER | REV. | RHIC DRAWING NUMBER | REV. |
|------|---------|------|----|------|--------------------------------|---|--|--------------------------------|---------------------|------|---------------------|------|
| A | 9/30/81 | JB | | | CHANGED LOGG FRAME, ADDED TPC# | ALL DIMENSIONS ARE INCHES UNLESS OTHERWISE SPECIFIED | NOT: DATE: AS: REV: DATE: AS: REV: | 0.000 0.000 J. BERGOWITZ | TPC357-D-1 | A | XXXXXXXXXX | - |
| | | | | | | 1. XX/X = 0.06/15 ANGLE 4.5° | LAWRENCE BERKELEY LABORATORY UNIVERSITY OF CALIFORNIA - BERKELEY RHIC-STAR-TPC INNER SECTOR GATED GRID WIRE MOUNT ASSEMBLY, LEFT | | | | | |
| | | | | | | 2. XXX/X = 0.02/0.05 FINISH 125/32 | DEGREASE SEE NOTES PRINT CLEAR DRAWING TYPE: DETAIL SCALE: FULL IN REF SCALE: 1:1 | | | | | |
| | | | | | | 3. 0.000/XX=0.004/01 | DRAWN BY: J. BOEHN DATE: 9/20/81 CHECKED BY: [] DATE: [] | | | | | |
| | | | | | | 4. BOND, FINISHED, BONDING IN STICK FINISH | REVISIONS: 8052-24 SERIAL: SR-02-04 24A4584 | | | | | |
| | | | | | | 5. ALL EDGES THINNES ARE TO BE CLASS 4 | | | | | | |
| | | | | | | 6. BREAK EDGES 45°/90° ANG ON INSIDE CORN. | | | | | | |
| | | | | | | 7. REFERENCE - ASSY TAG & DIM. | | | | | | |