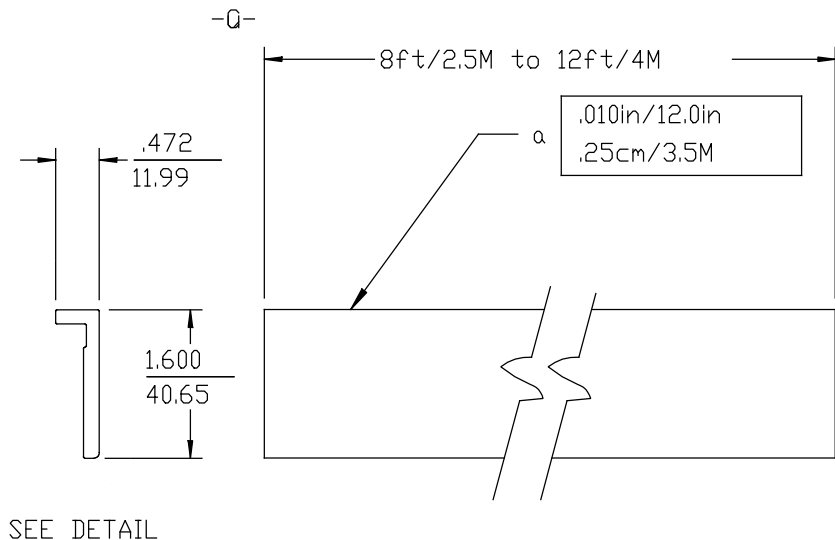
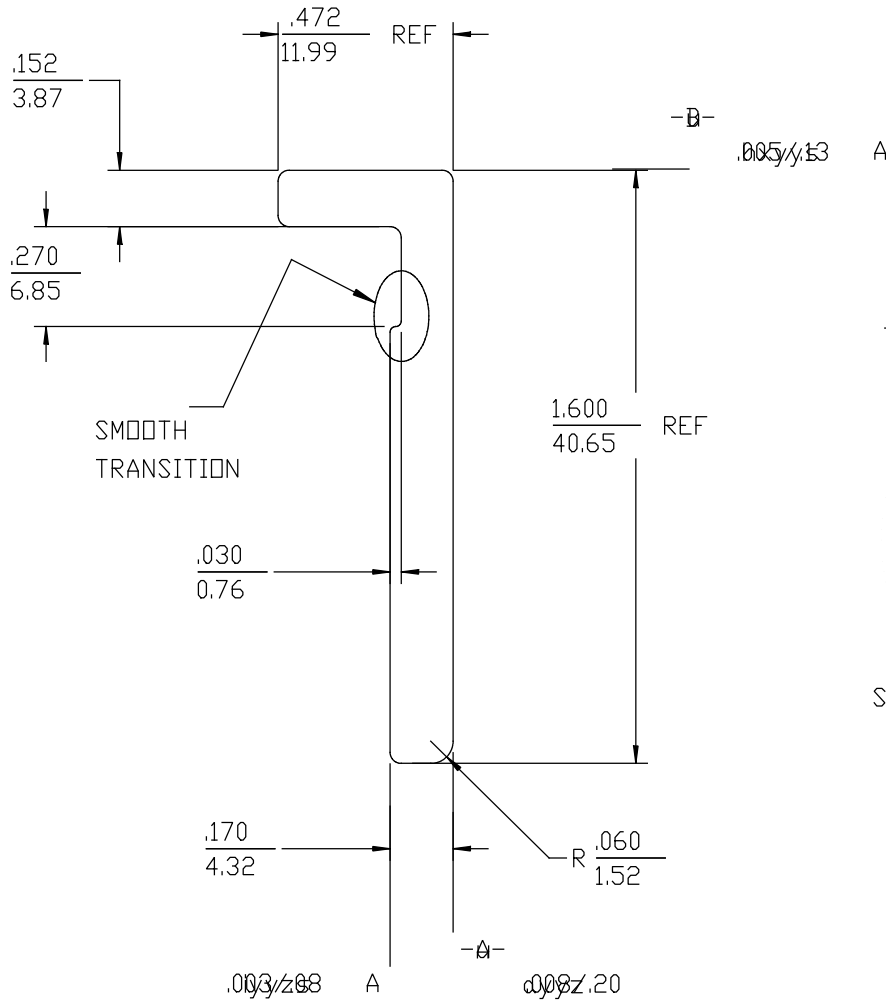


ITEM	REQ	PART NUMBER	DESCRIPTION
1	X	Part Number	Material/Parts Call-Out
			ALUMINUM 6063-T5



SEE DETAIL

24A4023A

- NOTE
1. ALL RADII .015" UNLESS OTHERWISE NOTED
 2. WEIGHT: .30 lbs/ft
 3. TWIST NOT TO EXCEED .010/12

DETAIL
SCALE 4:1

WBS # 0.00.0	Production Approval Engineer J. BERCOVITZ	STAR DRAWING NUMBER TPC359-C-1	REV. A	RHIC DRAWING NUMBER XXXXXXXXXX	REV. -
-----------------	--	-----------------------------------	-----------	-----------------------------------	-----------

				UNLESS OTHERWISE SPECIFIED	SHOP ORDERS		LAWRENCE BERKELEY LABORATORY UNIVERSITY OF CALIFORNIA - BERKELEY			
				ALL DIMENSIONS ARE INCHES CENTIMETERS	ACCT. NO.	SER. NO.	RHIC-STAR-TPC			
				TOLERANCES: .X/.X = ±.06/.15 .XX/.X = ±.02/.05 0.XXX/.XX = ±.005/.01	DATE ISS'D	DATE REQ'D	INNER SECTOR			
				ANGLES ±5° FINISH 125/.32	DELIVER TO		GATED GRID WIREMOUNT EXTRUSION			
				SAVED, FLAMECUT, SHEARED OR STOCK FINISH	SURFACE TREATMENT DEGREASE		SCALE: FULL			
				ALL SCREW THREADS ARE ISO METRIC CLASS 6	IDENTIFICATION METHOD TAG		PATENT CLEAR	DRAWING TYPE DETAIL	SHOWN ON 00X0000	DO NOT SCALE PRINTS
				BREAK EDGES .020/.05 MAX ON MACHINE WORK.	DRAWN BY J. BOEHM		DESIGN ACCOUNT 8052-24	CATEGORY CODE SR-02-04	LRL DRAWING NUMBER 24A4023	
				REFERENCE - ANSI Y14.5 & B46.1	DATE 94/01/21		MICROFILMED	REV. A		
REV.	DWN.	CHK.	DATE	CHANGES						
A	JB	950403		STAR LOGO, METRIC, STAR#						