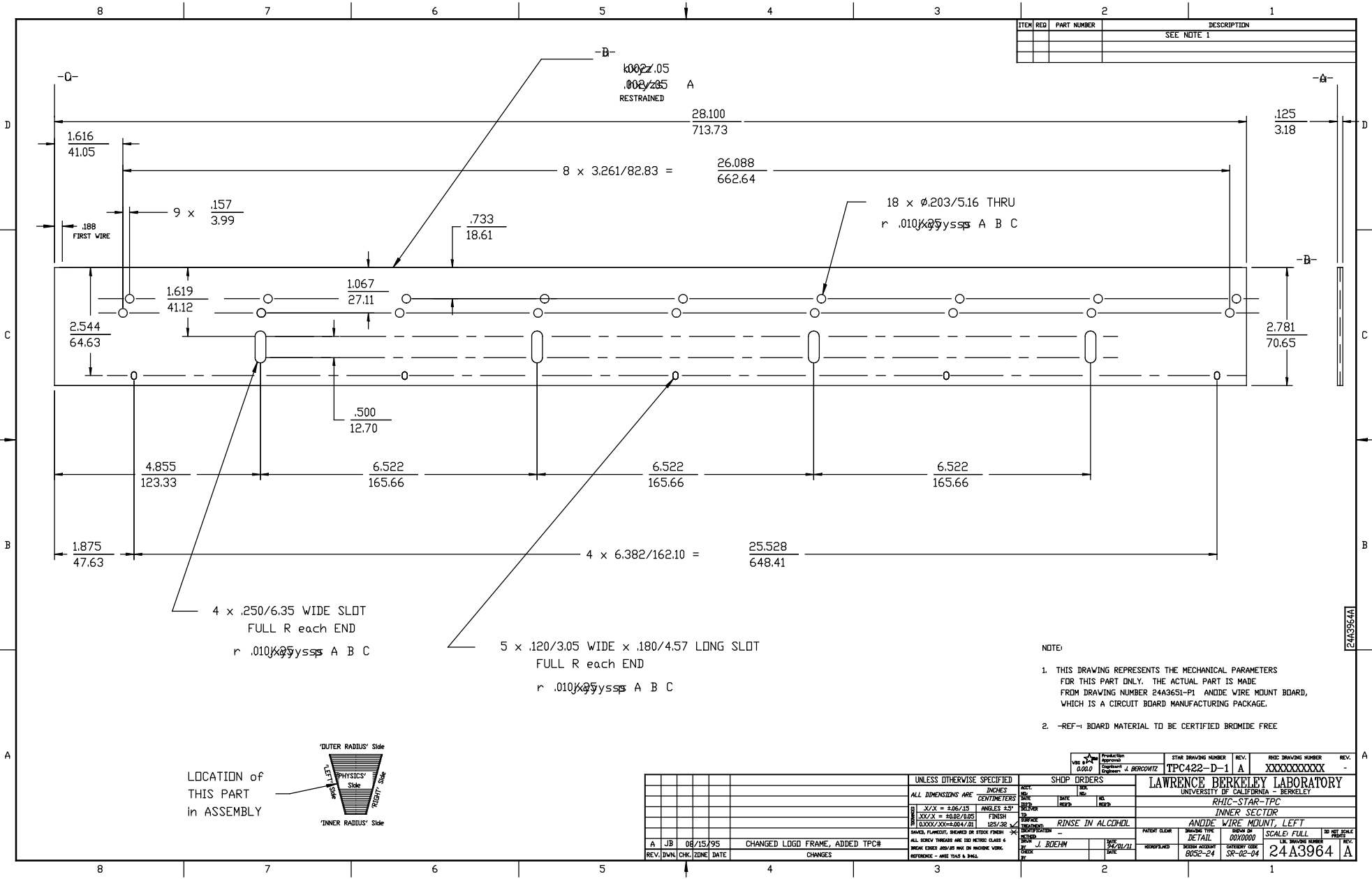


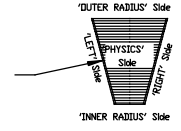
ITEM	REV	PART NUMBER	DESCRIPTION
			SEE NOTE 1



NOTE:

- THIS DRAWING REPRESENTS THE MECHANICAL PARAMETERS FOR THIS PART ONLY. THE ACTUAL PART IS MADE FROM DRAWING NUMBER 24A3651-P1 ANODE WIRE MOUNT BOARD, WHICH IS A CIRCUIT BOARD MANUFACTURING PACKAGE.
- REF- BOARD MATERIAL TO BE CERTIFIED BROMINE FREE

LOCATION OF THIS PART IN ASSEMBLY



REV.	DATE	CHK.	QTY.	DATE	DESCRIPTION	UNLESS OTHERWISE SPECIFIED ALL DIMENSIONS ARE INCHES CENTIMETERS	SHOP ORDERS NOT: DATE ASKED: DATE REC'D	PRODUCTION APPROVAL ENG. J. BERKOWITZ	STAR DRAWING NUMBER TPC422-D-1	REV. A	PHIC DRAWING NUMBER XXXXXXXXXX	REV. -
LAWRENCE BERKELEY LABORATORY UNIVERSITY OF CALIFORNIA - BERKELEY RHIC-STAR-TPC INNER SECTOR ANODE WIRE MOUNT, LEFT						PATENT CLEAR		DRAWING TYPE DETAIL	SCALE SCALE FULL	ISSUE NO. 000000	DRY DATE 8052-24	DRY DATE SR-02-04
A	JB	08/15/95			CHANGED LOGO FRAME, ADDED TPC#	BY J. BOEHN	DATE 8/21/95					

24A3964A