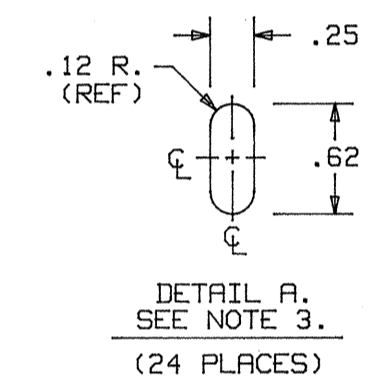
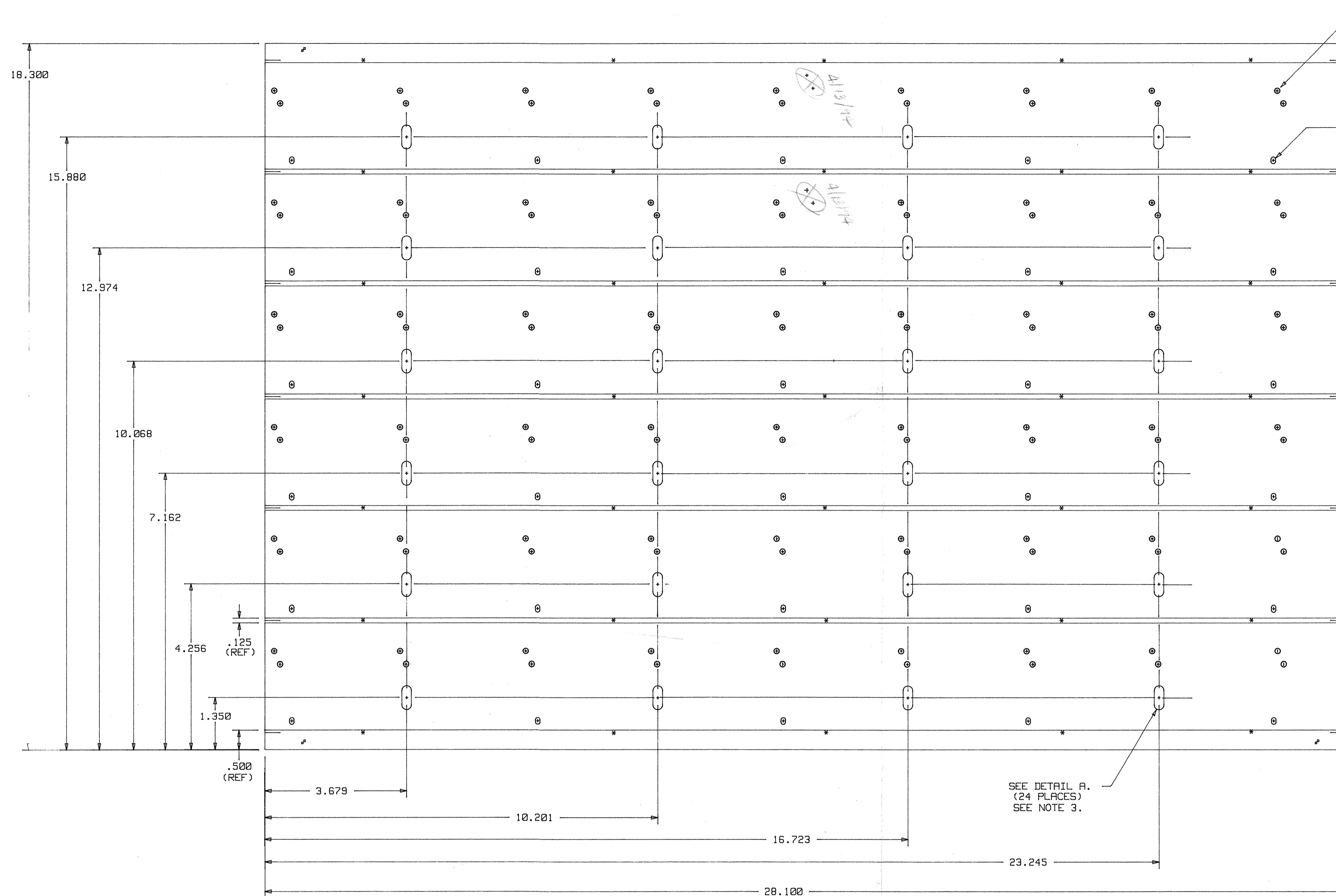


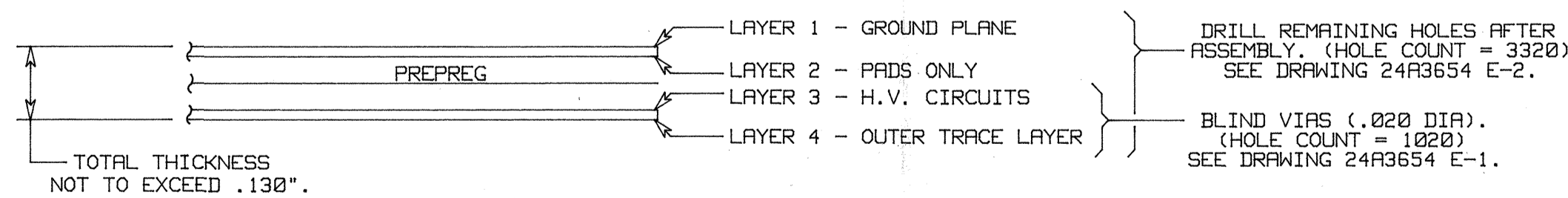
REV.	CHANGES	DRAWN	DATE	CHKD.	DATE



- NOTES:
- BOARD MATERIAL: .062 THICK EPOXY GLASS LAMINATE, NEMA G10 PER MIL-P-13949G FL-GEN 062C-1/1-A1A (1 OZ COPPER EACH SIDE). THIS IS A 4 LAYER BOARD, TOTAL THICKNESS NOT TO EXCEED .130. WE WILL SUPPLY G10 MATERIAL.
 - BOARD PANEL SIZE IS 18.300 +/- .010 X 28.100 +/- .005. SINGLE BOARD SIZE IS 2.781 X 28.100 +/- .005. DIMENSIONS ARE IN INCHES. SEE DRAWING 24A3654 M-2 FOR DIMENSIONING.
 - SLOTS ARE NOT TO BE PLATED THROUGH.
 - * = APPROXIMATE PLACEMENT OF .050 TABS. SLOTS TO BE .125 WIDE. SEE DRAWING 24A3654 M-2 FOR DIMENSIONING.
 - REFERENCE DRAWINGS:

24A3654 E-1	a000892e1	HOLE SCHEDULE (LAYERS 3 & 4 ONLY)
24A3654 E-2	a000892e2	HOLE SCHEDULE (LAYERS 1 THRU 4)
24A3654 M-2	a000892m2	BOARD OUTLINE
24A3654 C-1	a000892c1	PARTS LIST (PANEL OF 6)
24A3654 L-1	a000892l1	P.C. BOARD ASSEMBLY (PANEL OF 6)

VIEWED FROM LAYER 1



I:	TITLE STAR TPC				
II:	INNER SECTOR ELECTRONICS				
III:	ANODE WIRE MOUNT BOARD - PANEL OF 6				
IV:	BOARD OUTLINE - CUTOUTS (A000892U2)				
DESIGN NO.	8052-24	DRAWN BY	STIRKIKINEN	DATE	04/11/94
APPROVED		ENGINEER	JIM HUNTER	FILE NO.	a000892m1
DATE ISSUED		NO. REVD.		SIZE	4
DATE RECD.		SCALE	NONE	DRAWING NO.	24A3654 M-1
DEL. TO					SHEET 1 OF 2