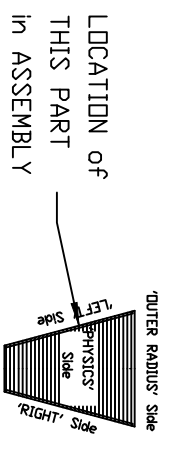
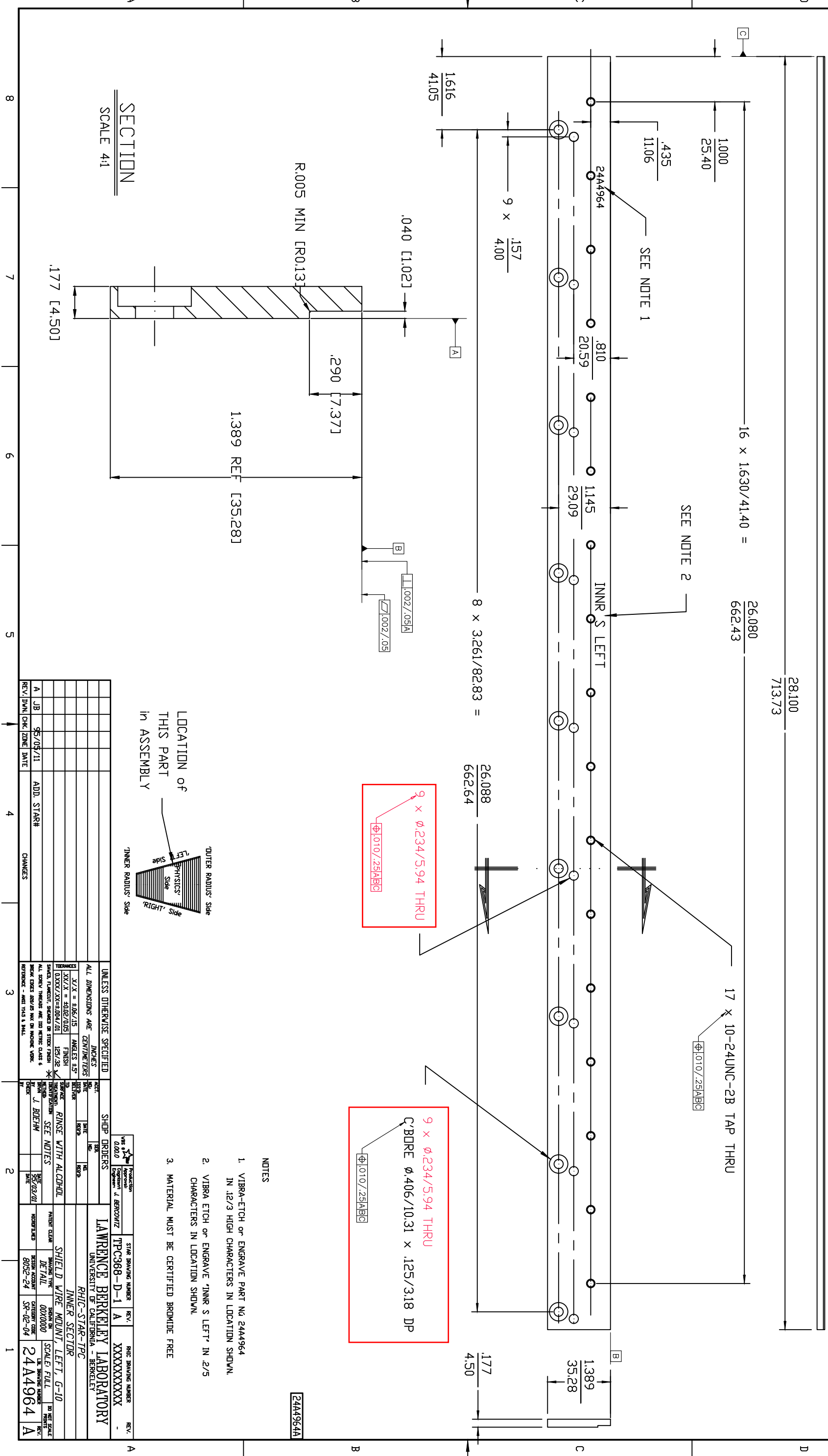


| ITEM REQ | PART NUMBER | DESCRIPTION |
|----------|--|-------------|
| | HIGH PRESSURE EPOXY/GLASS WEAVE LAMINATE - PER FED SPECS | |
| | LP509a, TYPE 4 GRADE G-10 (NOT FR-4) SEE NOTE 3 | |



9 x ϕ .234/5.94 THRU
 ϕ .010/.25[ABC]

9 x ϕ .234/5.94 THRU
 C-BORE ϕ .406/10.31 x .125/3.18 DP
 ϕ .010/.25[ABC]

- NOTES
- VIBRA-ETCH or ENGRAVE PART NO 2444964 IN .12/3 HIGH CHARACTERS IN LOCATION SHOWN.
 - VIBRA ETCH or ENGRAVE 'INNER S LEFT' IN .2/5 CHARACTERS IN LOCATION SHOWN.
 - MATERIAL MUST BE CERTIFIED BROMIDE FREE

SECTION
 SCALE 4:1

| REV | DATE | BY | CHK | DESCRIPTION |
|-----|----------|----|-----|-------------|
| A | 05/05/11 | JB | | START# |

| UNLESS OTHERWISE SPECIFIED | FINISH | ANGLE | FINISH |
|--|----------------------|-------------|--------|
| ALL DIMENSIONS ARE CENTERLINES | XX/X = ±.002/0.05 | ANGLES 3.5° | FINISH |
| SMALL DIMENSIONS ARE TO STOCK FINISH | 0.0005/XX=±.004/0.01 | | 125/2C |
| ALL DIMENSIONS ARE TO STOCK FINISH | | | |
| BREAK EDGES 30D/25 MAX ON MACHINE MARK | | | |
| REFERENCE - ANSI Y14.5 & Y14.6 | | | |

| STATE DRAWING NUMBER | REV | DATE | BY | CHK | DESCRIPTION |
|----------------------|-----|------|----|-----|-------------|
| TPC368-D-1 | A | | | | |

| STATE DRAWING NUMBER | REV | DATE | BY | CHK | DESCRIPTION |
|----------------------|-----|------|----|-----|-------------|
| 2444964 | A | | | | |