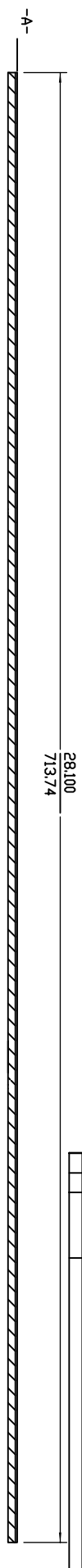
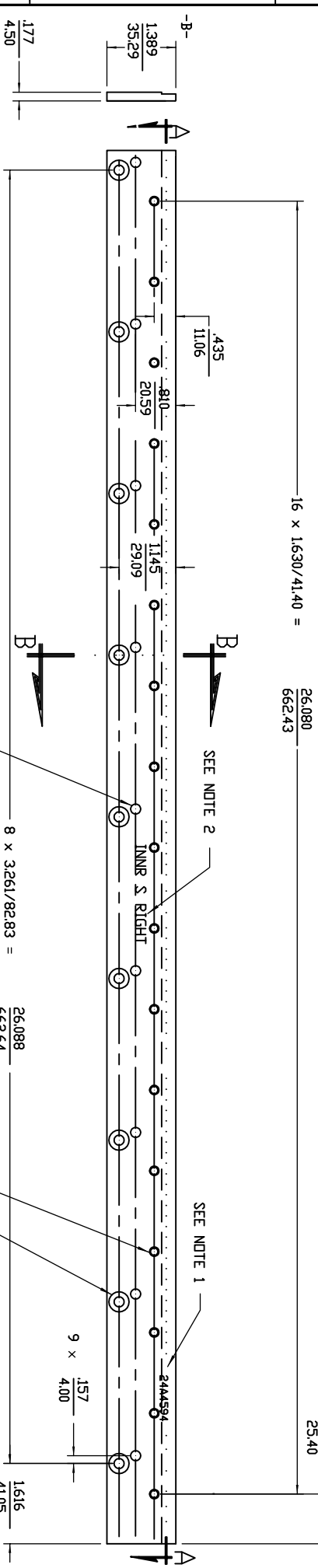


ITEM NO	PART NUMBER	DESCRIPTION
1	24A4594	WIRE FROM 24A4594-PLT ESTAB CIRCUIT BOARD



SECTION A-A  
SCALE 1:1



LOCATION of THIS PART In ASSEMBLY

9 x  $\phi$ 0.234/5.94 THRU  $\phi$ 0.1010/.25(A)BC

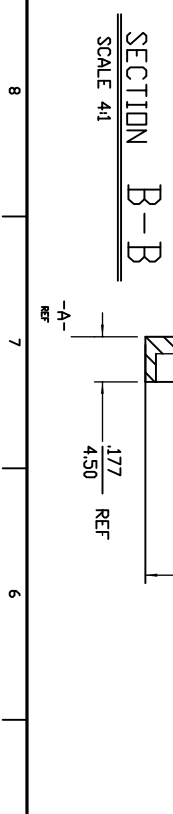
17 x 10-24UNC-2B TAP THRU  $\phi$ 0.1010/.25(A)BC

9 x  $\phi$ 0.234/5.94 THRU C'BORE  $\phi$ .406/10.31 x .125/3.18 DP  $\phi$ 0.1010/.25(A)BC

NOTES

- VIBRA-ETCH or ENGRAVE PART NO 24A4594 IN .12/3 HIGH CHARACTERS IN LOCATION SHOWN.
- VIBRA ETCH or ENGRAVE "INNER S RIGHT" IN 2/5 CHARACTERS IN LOCATION SHOWN.
- REF-: MATERIAL TO BE CERTIFIED BROMINE FREE

SECTION B-B  
SCALE 4:1



REV	DATE	BY	CHK	DESCRIPTION
D	2016/02/13	ADDED STAIR B		Removed Cu & slots
A	05/08/11			

UNLESS OTHERWISE SPECIFIED	ALL DIMENSIONS ARE CENTERLINE UNLESS OTHERWISE SPECIFIED
1. VIBRA-ETCH or ENGRAVE PART NO 24A4594 IN .12/3 HIGH CHARACTERS IN LOCATION SHOWN.	
2. VIBRA ETCH or ENGRAVE "INNER S RIGHT" IN 2/5 CHARACTERS IN LOCATION SHOWN.	
3. -REF-: MATERIAL TO BE CERTIFIED BROMINE FREE	

DATE	BY	CHK	DESCRIPTION
05/08/11			
05/08/11			

ITEM NO	PART NUMBER	DESCRIPTION
1	24A4594	WIRE FROM 24A4594-PLT ESTAB CIRCUIT BOARD