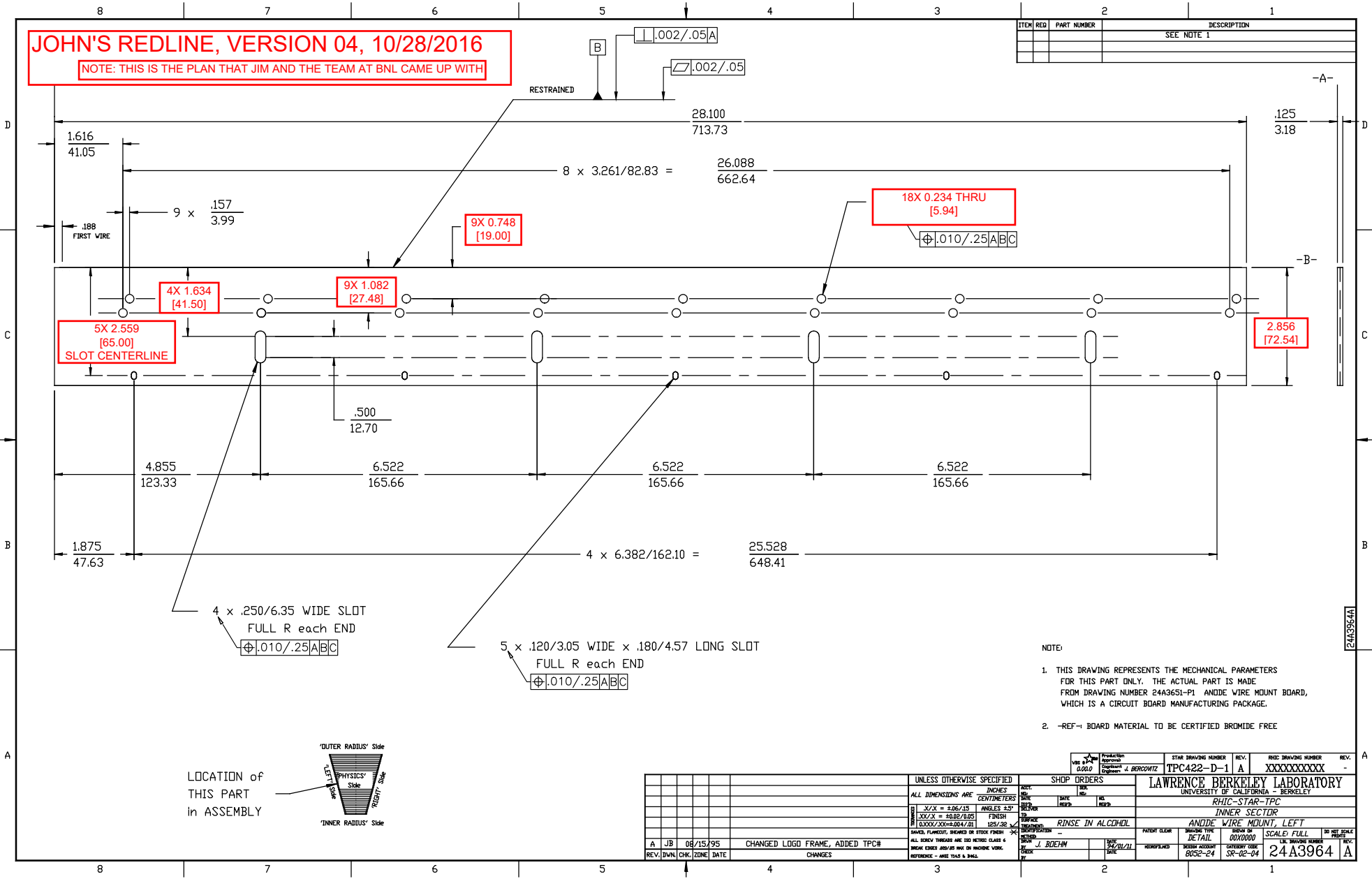


JOHN'S REDLINE, VERSION 04, 10/28/2016

NOTE: THIS IS THE PLAN THAT JIM AND THE TEAM AT BNL CAME UP WITH

ITEM	REV	PART NUMBER	DESCRIPTION
			SEE NOTE 1



NOTE:

- THIS DRAWING REPRESENTS THE MECHANICAL PARAMETERS FOR THIS PART ONLY. THE ACTUAL PART IS MADE FROM DRAWING NUMBER 24A3651-P1 ANODE WIRE MOUNT BOARD, WHICH IS A CIRCUIT BOARD MANUFACTURING PACKAGE.
- REF- BOARD MATERIAL TO BE CERTIFIED BROMIDE FREE

VER	0.000	Production Approval	Eng'ner	J. BERGOWITZ	STAR DRAWING NUMBER	TPC422-D-1	REV.	A	RHIC DRAWING NUMBER	XXXXXXXXXX	REV.	-
LAWRENCE BERKELEY LABORATORY					UNIVERSITY OF CALIFORNIA - BERKELEY							
RHIC-STAR-TPC					INNER SECTOR							
ANODE WIRE MOUNT, LEFT					SCALE: FULL							
PARTY CLEAR					DATE: 08/15/95							
DRAWN					BY: J. BOEHM							
CHECKED					DATE: 08/28/95							
APPROVED					DATE: 08/28/95							
DESIGNED					DATE: 08/28/95							
MATERIAL					PART NUMBER: 24A3651-P1							
DRAWING NUMBER					24A3964							
REV.					A							

REV.	DATE	BY	CHK.	ZONE	DESCRIPTION
A	08/15/95	J. BOEHM			CHANGED LOGO FRAME, ADDED TPC#
					CHANGES

UNLESS OTHERWISE SPECIFIED	
ALL DIMENSIONS ARE	INCHES
	CENTIMETERS
1 / X / X = 0.0625	ANGLES 1.57
2 / X / X = 0.03125	FINISH
3 / X / X = 0.015625	125/38
4 / X / X = 0.0078125	125/38
BANDS, FURNISHED, BUSHES IN STOCK FINISH	
ALL EDGES THINNES ARE TO BE CLASS 4	
BREAK EDGES 20% AS IND ON MACHINING	
REFERENCE - ASEE Y143 & BML	

24A3964A