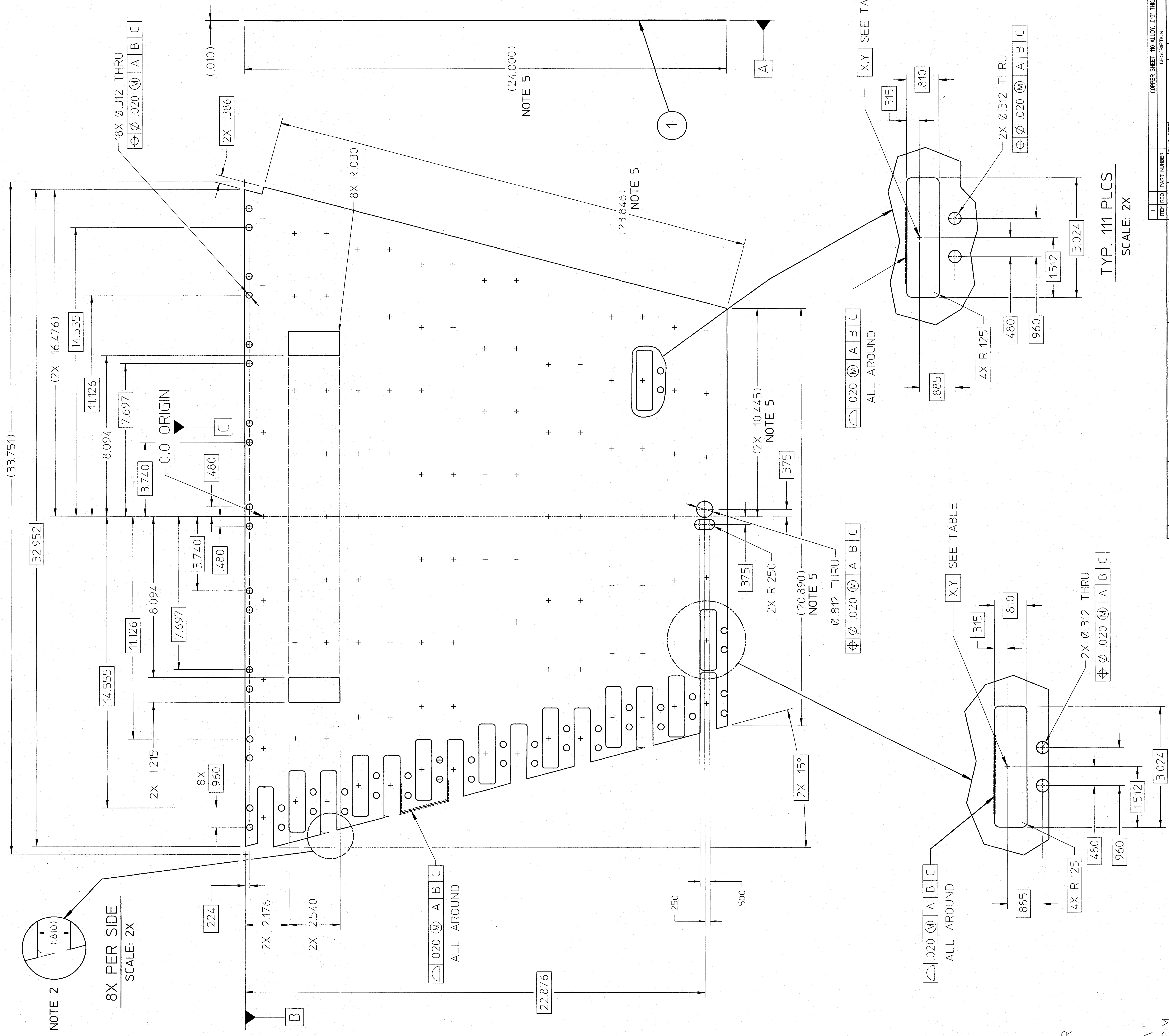


PATTERN COORDINATES

X	Y	X	Y	X	Y
-15.035	0.000	-13.453	-6.299	-11.079	-14.173
-11.606	0.000	-10.024	-6.299	-7.650	-14.173
-8.177	0.000	-6.331	-6.299	-4.220	-14.173
-4.220	0.000	-3.165	-6.299	0.000	-14.173
0.000	0.000	3.165	-6.299	4.220	-14.173
4.220	0.000	6.331	-6.299	7.650	-14.173
8.177	0.000	10.024	-6.299	11.079	-14.173
11.606	0.000	13.453	-6.299	-11.079	-15.748
15.035	0.000	-12.661	-7.874	-7.650	-15.748
-14.244	-1.575	-9.496	-7.874	-4.220	-15.748
-11.079	-1.575	-6.330	-7.874	0.000	-15.748
-6.331	-1.575	-2.110	-7.874	4.220	-15.748
-3.165	-1.575	2.110	-7.874	7.650	-15.748
0.000	-1.575	6.330	-7.874	11.079	-15.748
3.165	-1.575	9.496	-7.874	-10.024	-17.323
6.331	-1.575	12.661	-7.874	-6.858	-17.323
11.079	-1.575	-12.661	-9.449	-3.429	-17.323
14.244	-1.575	-9.496	-9.449	0.000	-17.323
-14.244	-3.150	-6.330	-9.449	3.429	-17.323
-11.079	-3.150	-2.110	-9.449	6.858	-17.323
-6.331	-3.150	2.110	-9.449	10.024	-17.323
-3.165	-3.150	6.330	-9.449	-10.024	-18.898
0.000	-3.150	9.496	-9.449	-6.858	-18.898
3.165	-3.150	12.661	-9.449	-3.429	-18.898
6.331	-3.150	-11.870	-11.024	0.000	-18.898
11.079	-3.150	-8.441	-11.024	3.429	-18.898
14.244	-3.150	-5.276	-11.024	6.858	-18.898
-13.453	-4.724	-2.110	-11.024	10.024	-18.898
-10.024	-4.724	2.110	-11.024	-9.496	-20.472
-6.331	-4.724	5.276	-11.024	-6.331	-20.472
-3.165	-4.724	8.441	-11.024	-3.165	-20.472
0.000	-4.724	11.870	-11.024	0.000	-20.472
3.165	-4.724	-11.870	-12.598	3.165	-20.472
6.331	-4.724	-8.441	-12.598	6.331	-20.472
10.024	-4.724	-5.276	-12.598	9.496	-20.472
13.453	-4.724	-2.110	-12.598	-9.339	-22.047
		2.110	-12.598	-6.179	-22.047
		5.276	-12.598	-3.019	-22.047
		8.441	-12.598	3.019	-22.047
		11.870	-12.598	6.179	-22.047
				9.339	-22.047

NOTES

1. ALL PATTERN COORDINATES ARE BASIC. NOT ALL RECTANGULAR CUTOUTS AND HOLES ARE SHOWN.
2. TRIM ALL POINTS AS SHOWN WHERE CUTOUT BREAKS OUT.
3. GOLD PLATE AND PROTECTIVE WRAP AFTER CUTTING.
4. AVOID CURLING OR KINKING PART DURING/AFTER FAB. KEEP FLAT.
5. SHEET MATERIAL AS SUPPLIED MAY HAVE A TOL. ON (24.0") DIM. IF UNDER 24.0", THESE DIM. WILL CHANGE. ALL DIM. AT DATUM B APPLY.
6. LINEAR DISTANCE OF PERIMETER, LARGE HOLE, CUTOUTS AND SLOTS IS 972". HOLES 0.312 THAT BREAK OUT ARE INCLUDED ALL OTHERS ARE NOT.



ITEM NO.	PART NUMBER	DESCRIPTION	REV.
1	22498	COPPER SHEET, TO ALLOY, 007 THK.	

DATE	BY	CHKD	APP'D	DESCRIPTION
3/19/98				RELEASE FOR FABRICATION
2/24/98				CHANGES

APPROVALS	DATE
J. J. J. (Signature)	3/19/98
K. K. K. (Signature)	3/19/98
A. A. A. (Signature)	2/24/98

ITEM NO.	REV.	DATE	DESCRIPTION
1	1	3/19/98	RELEASE FOR FABRICATION
1	2	2/24/98	CHANGES

ITEM NO.	PART NUMBER	DESCRIPTION	REV.
1	22498	COPPER SHEET, TO ALLOY, 007 THK.	

ITEM NO.	REV.	DATE	DESCRIPTION
1	1	3/19/98	RELEASE FOR FABRICATION
1	2	2/24/98	CHANGES

ITEM NO.	REV.	DATE	DESCRIPTION
1	1	3/19/98	RELEASE FOR FABRICATION
1	2	2/24/98	CHANGES

ITEM NO.	REV.	DATE	DESCRIPTION
1	1	3/19/98	RELEASE FOR FABRICATION
1	2	2/24/98	CHANGES

ITEM NO.	REV.	DATE	DESCRIPTION
1	1	3/19/98	RELEASE FOR FABRICATION
1	2	2/24/98	CHANGES

TYP. 6 PLCS
SCALE: 2X

TYP. 111 PLCS
SCALE: 2X