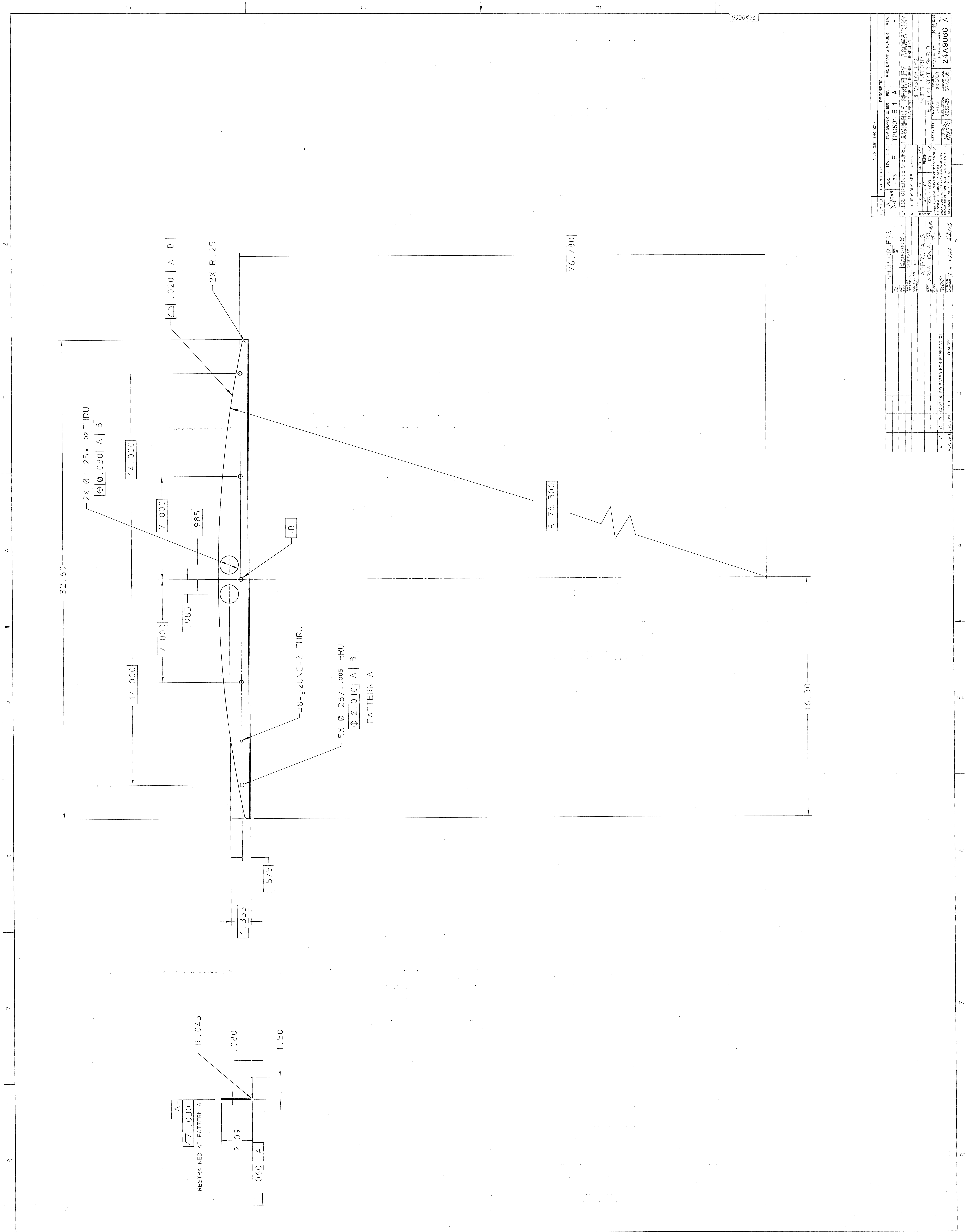


9906VZ



ITEM NO. PART NUMBER: ALX, 857, TR, 552

ITEM NO.	PART NUMBER	DESCRIPTION	REV.	DWG NUMBER	REV.
	STAR 4235	TP050-E-1 A			

UNLESS OTHERWISE SPECIFIED:  
 ALL DIMENSIONS ARE IN INCHES  
 ANGLES 15°  
 UNLESS OTHERWISE SPECIFIED, ALL DIMENSIONS ARE IN INCHES  
 X . . . . 0 ANGLE 15°  
 XXX . . . 055 UNLESS OTHERWISE SPECIFIED  
 DIMENSIONS SHOWN IN THIS DRAWING ARE FOR INFORMATION ONLY AND ARE NOT TO BE USED FOR FABRICATION  
 DRAWN: M/PL  
 CHECKED: M/PL  
 DATE: 03/22/85  
 SCALE: 1/2  
 24A9066 A

SHOP ORDERS:

ITEM NO.	DESCRIPTION	REV.	DATE

APPROVALS:

NAME	DATE
APRIL L. GAY	

REV: (blank) (blank) (blank) (blank) (blank) (blank) (blank) (blank) (blank) (blank)

Officially Released to the LBNL Document Control Center  
Released: April 19th, 1995 DCC Auth Key: XPS144FM2