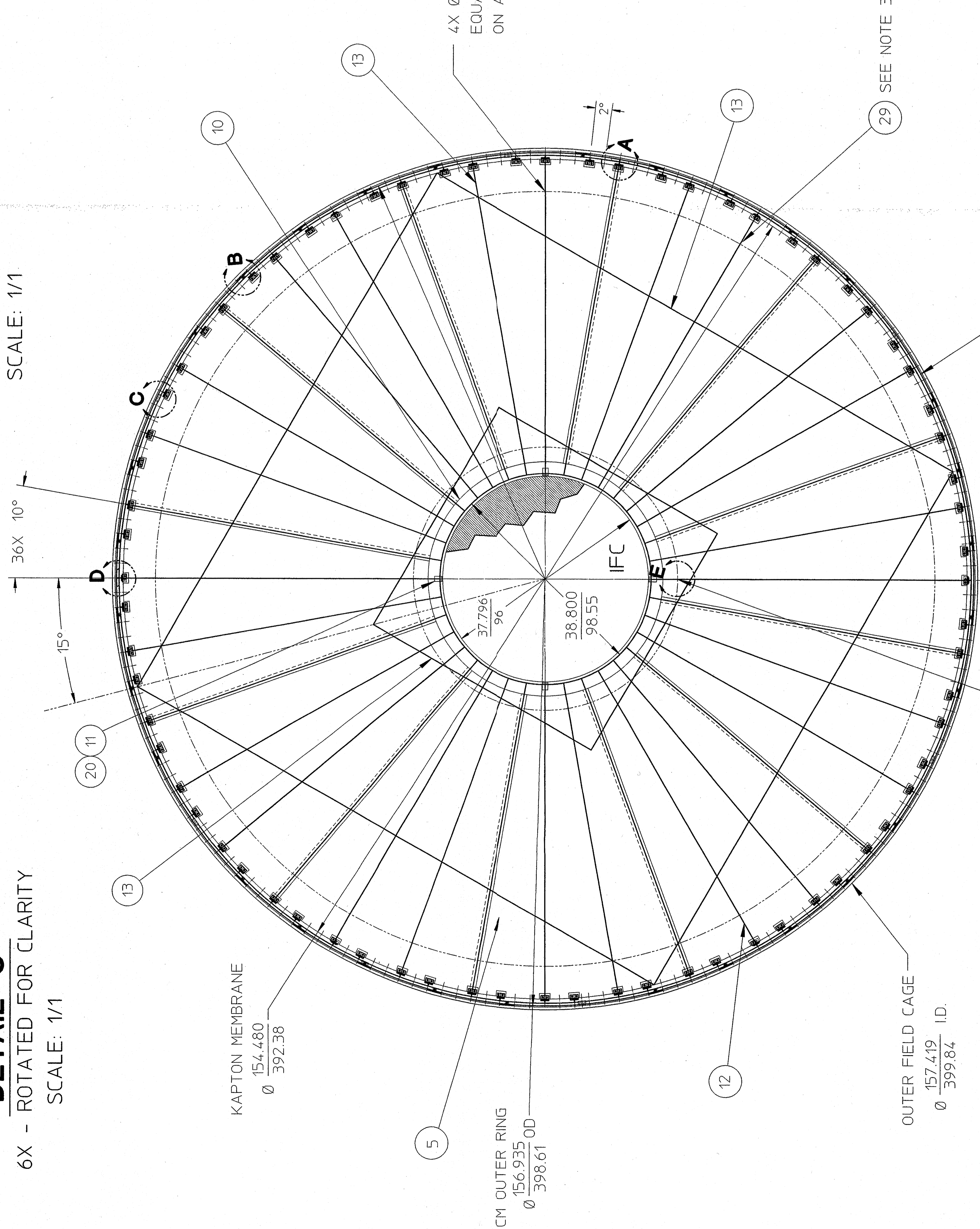


**DETAIL C**  
6X - ROTATED FOR CLARITY  
SCALE: 1/1

KAPTON MEMBRANE  
Ø 154.480  
Ø 392.38

CM OUTER RING  
Ø 156.935  
Ø 398.61

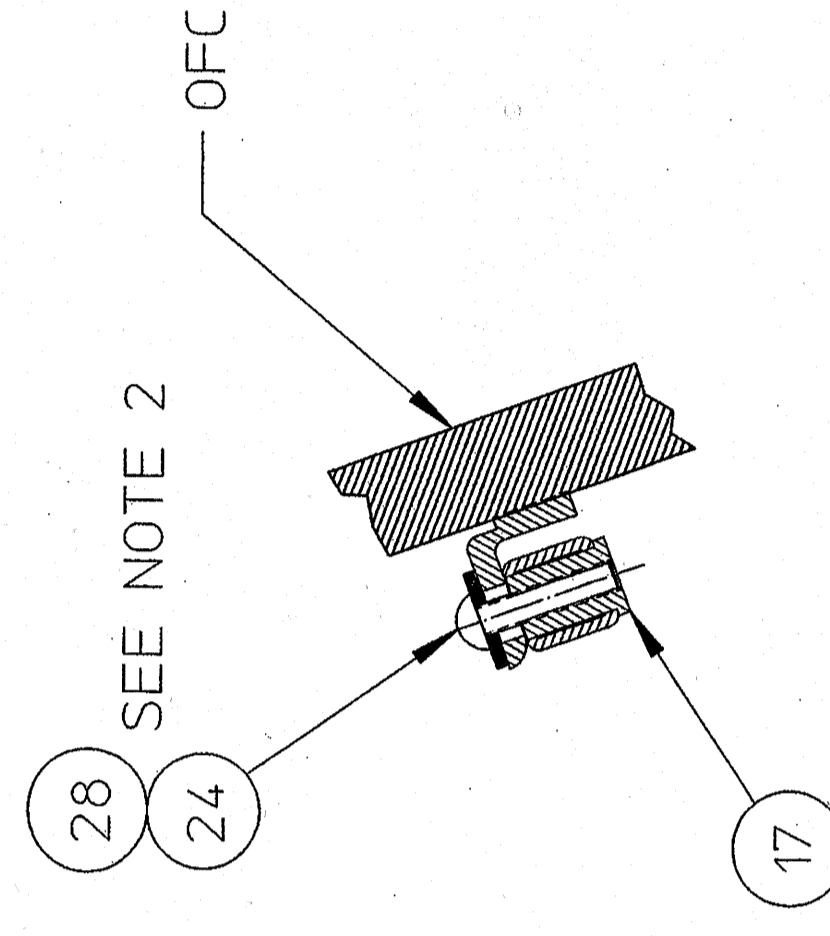
**DETAIL B**  
SCALE: 1/1



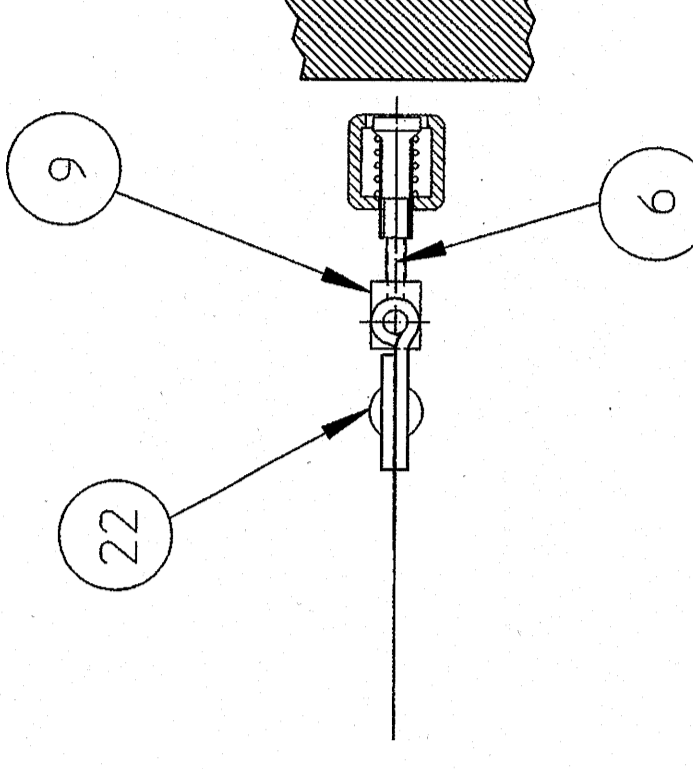
**AS VIEWED FROM WEST**

- NOTES:
1. APPLY TO MATING SURFACES OF OFC AND 8 AS REQUIRED.
  2. ITEM 8 IS TO BE CLOCKED AND EPOXIED AT APPROXIMATELY 2:00 OCLOCK AND SPACED 10° APART EXCEPT WHERE COUPLED AND STRONGBACKS EXIST. LOCATIONS 2 & 10 ARE TO BE THE FIXED MOUNTING LOCATIONS, WHILE THE OTHER LOCATIONS ARE FOR LOCATING THE CENTRAL MEMBRANE IN IT'S PLANAR LOCATION.
  3. APPLY AT ALL SEAMS AS REQUIRED DURING ASSEMBLY PROCESS OF THE KAPTON MEMBRANE.
  4. INSTALL ON INSIDE OF KAPTON REINFORCEMENT STRIPS.

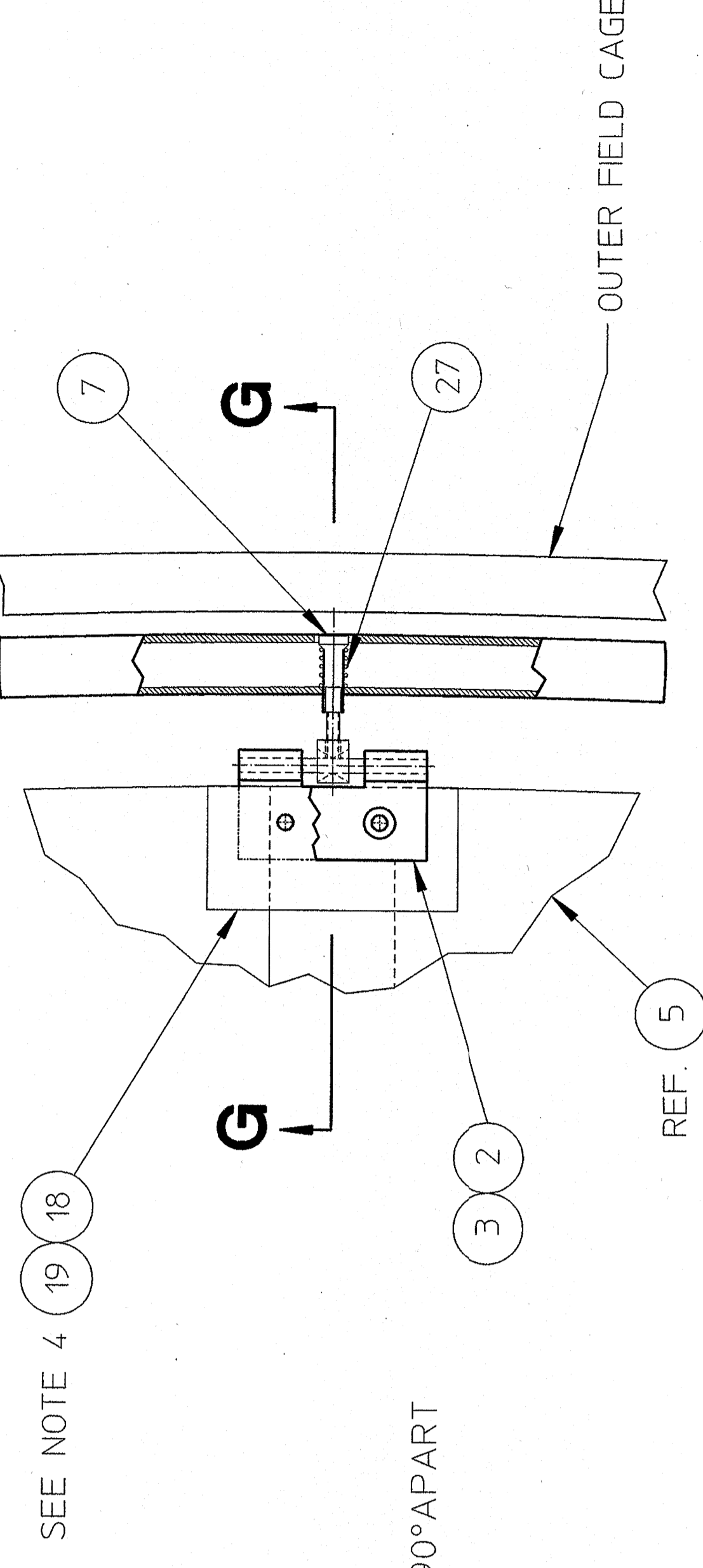
**DETAIL E**  
TYP. 8 PLS  
SCALE: 2:1



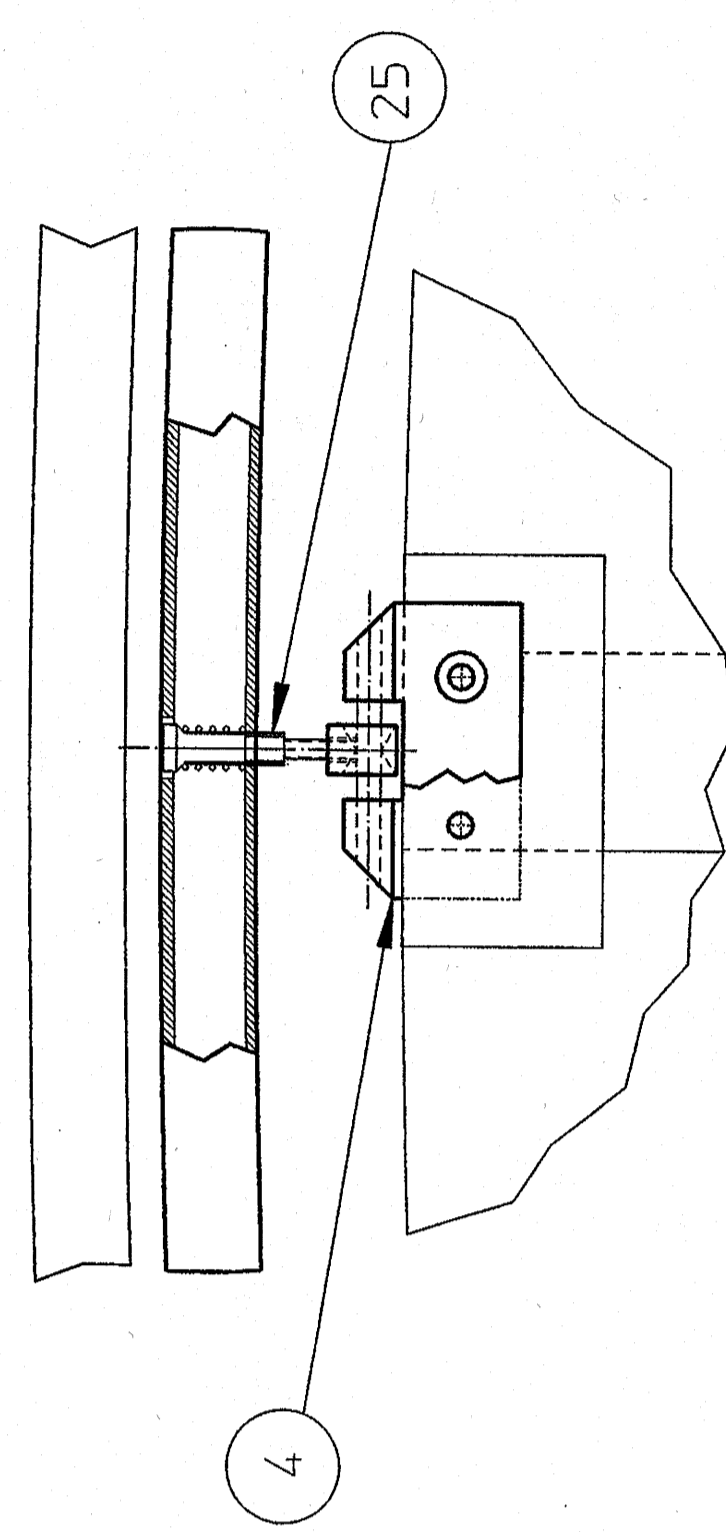
**SECT: "H-H"**  
SCALE: 1/1  
2X FIXED LOCATIONS



**SECT: "G-G"**  
SCALE: 1/1  
28X FLOATING LOCATIONS



**DETAIL A**  
174X - ROTATED FOR CLARITY  
SCALE: 1/1



**DETAIL D**  
TYP. 6 PLS, EVENLY SPACED  
AT LASER LOCATIONS  
SCALE: 1/1

29	AIR	ADHESIVE TAPE, 3/4" WIDE, 3-M, NO. 9460
28	12	PRESENT SPRING WASHER, BERYLLIUM COPPER, 0.31 ID. X 0.37 OD
27	180	COPPER BERYLLIUM SPRING, 210.00 X 0.58 DIA. X 5/16" LG.
26	12	1/4"-20 X 1/2" LG. HEX HEAD SCREW, SILICON BRONZE
25	180	SHRINK TUBING, CLEAR, Ø 200.00 X .006 WALL
24	30	8-32 X 3/16" LG. ROUND HEAD SCREW, BRASS
23	10	1/2" X 1/2" LG. FLAT HEAD SCREW, BRASS
22	360	POP RIVETS, ALUMINUM, Ø 125 X .125 LG.
21	AIR	EPOXY, HYSOL ADHESIVE NO. 9309-3
20	180	KAPTON, DUPONT #275 XC, 230 OHM/SOIN, SURFACE RESISTIVITY, .0028" THK. 2" X 2 1/2"
19	180	KAPTON, DUPONT #275 XC, 230 OHM/SOIN, SURFACE RESISTIVITY, .0028" THK. 2" X 2 1/2"
18	AIR	ADHESIVE TAPE, 1" WIDE, 3-M, NO. 9460
17	2	22A9264A-3 THREADED INSERT (ALUMINUM)
16	30	22A9264A-2 OFC RING MOUNT
15	12	22A9264A-1 OFC RING MOUNT
14	180	ALUMINUM FILM STRIPS - LONG DIAGONAL STRIPS
13	12	ALUMINUM FILM STRIPS - SHORT DIAGONAL STRIPS
12	36	ALUMINUM FILM STRIPS - RADIAL STRIPS
11	4	22A9244A-2 FC CONTACT STRIP
10	4	22A9244A-1 MYLAR RINGS
9	180	22A9144A-4 CLEVIS
8	6	22A9144A-3 STRONG-BACK CLIPS
7	180	22A9144A-2 SPOKE NIPPLE
6	180	22A9144A-1 THREADED SPOKE
5	1	22A9136A KAPTON MEMBRANE
4	6	22A8684B-3 MEMBRANE GRIP - CHAMFERED
3	180	22A8684B-2 MEMBRANE GRIP
2	174	22A8684B-1 MEMBRANE GRIP
1	6	22A8676A-1 60° OUTER RING SEGMENT

UNLESS OTHERWISE SPECIFIED	
ALL DIMENSIONS ARE IN INCHES	
FINISH	XX.X.X
TOLERANCES UNLESS SPECIFIED	
FRACTIONS	XX.XX
DECIMALS	XX.XX
ANGLES	XX.X
THREADS	XX-XX
SPACINGS	XX-XX
ALL SHIP-THEADS PER MIL-S-8838	
BREAK EDGES: 0.0050 MAX ON WARE WORK	
REFERENCES - JAW-YEE & BELL	
DESIGNED BY	DR. G. R. WELLS
CHECKED BY	DR. G. R. WELLS
DATE	10/1/79
NO.	42.3
REV.	
DESCRIPTION	TPC393-A
DRAWING NUMBER	TPC393-A
SCALE	ASSEMBLY
DATE	12/7/79
BY	ASSEMBLY
CHECKED BY	ASSEMBLY
DATE	12/7/79
SCALE	ASSEMBLY
PROJECT	UCRL-77954
FILE NUMBER	6052-23
SR	02-03
24A8696	A