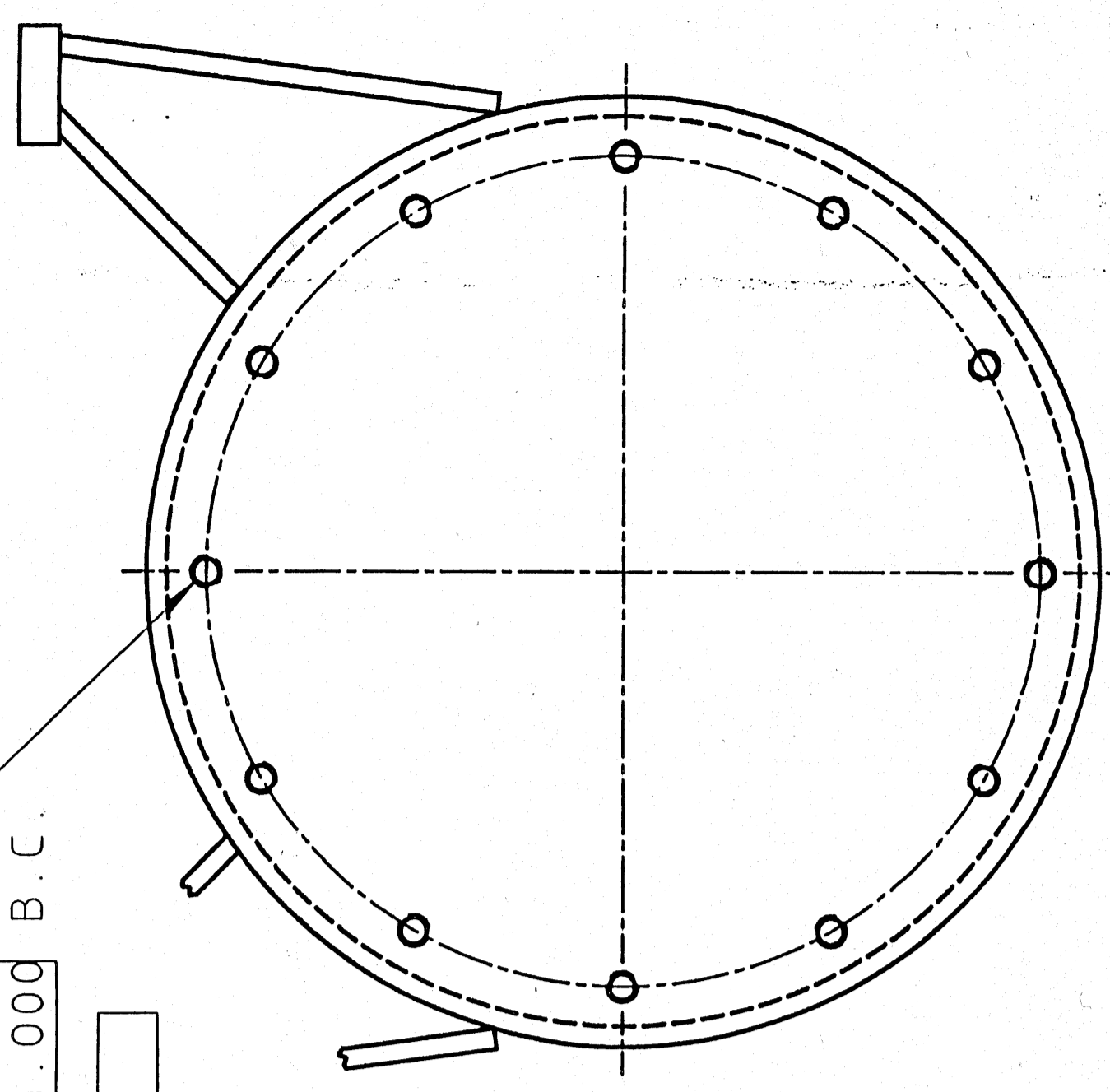
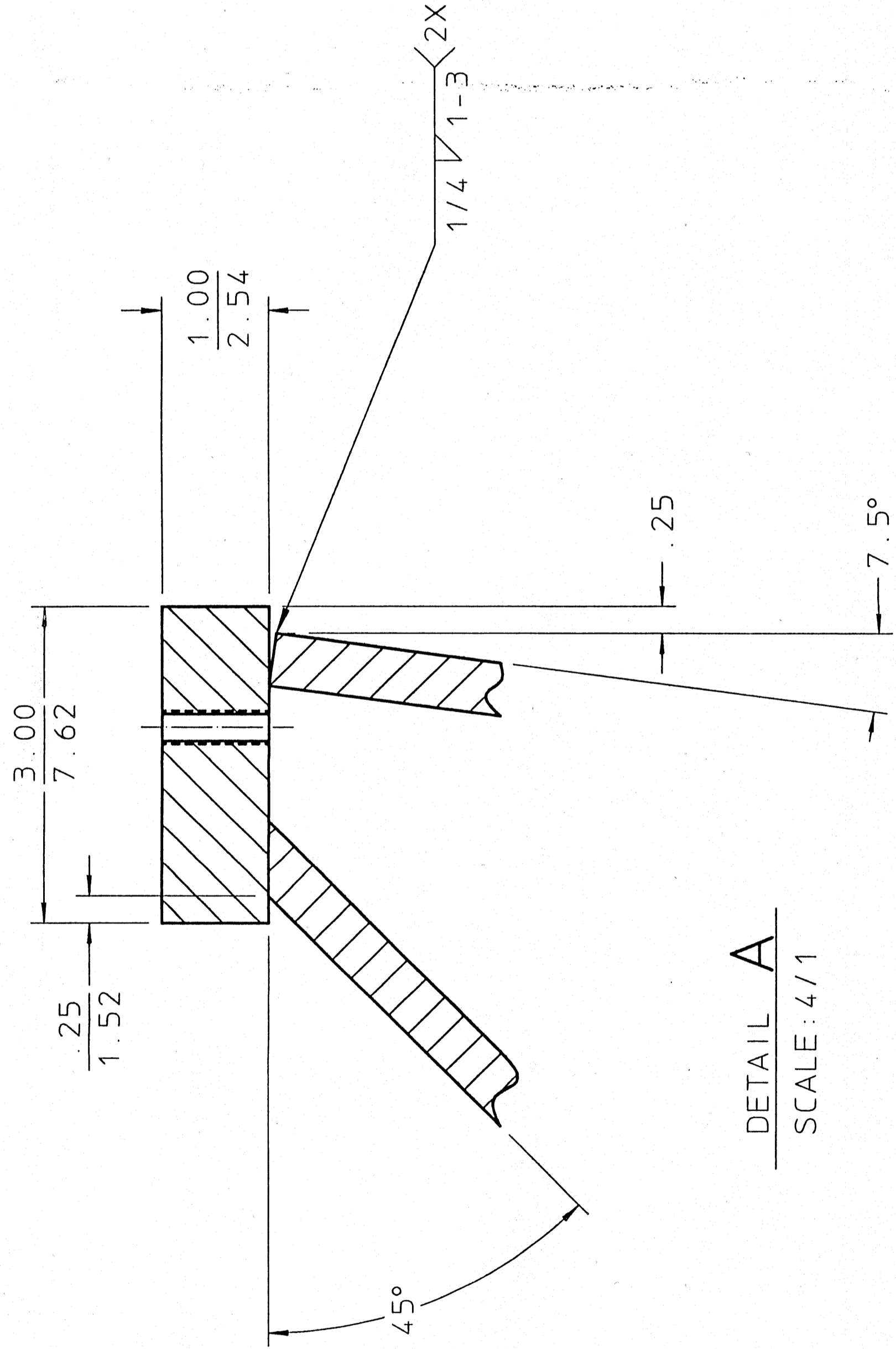


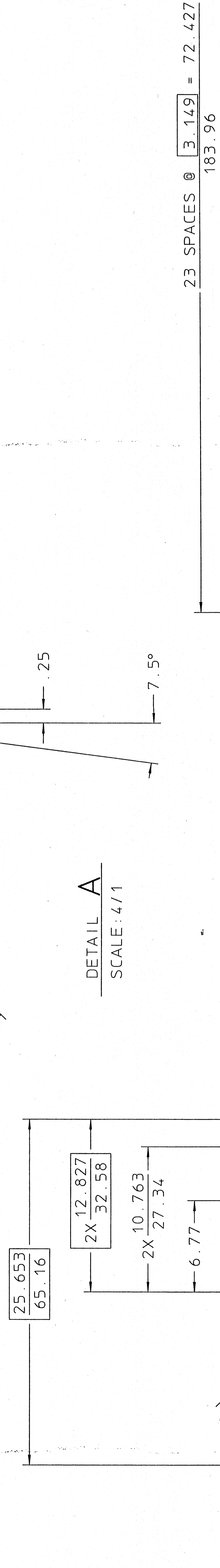
12X 3/4-10UNC-2B THRU
 EOL SP ON A $\frac{21.000}{2}$ B.C.
 $\frac{0.040}{2}$ D | A | A



VIEW A-A



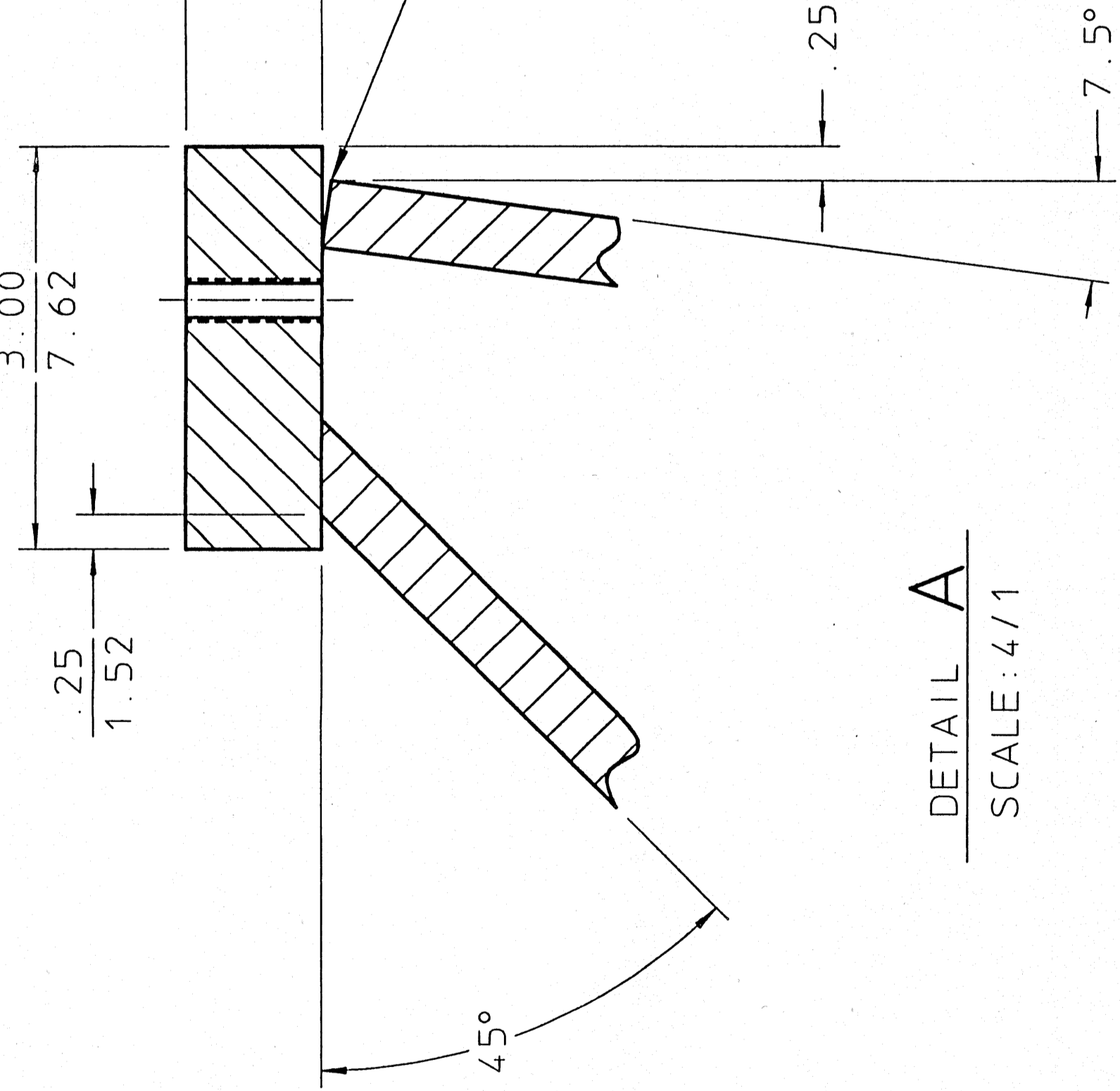
DETAIL A
 SCALE: 4/1



SEE DETAIL A

.020 MAX DIAMETRAL CLEARANCE
 PRIOR TO WELDING

SKIP WELDS TO STRADDLE HOLES



8X .531 ± .010 THRU
 EOL SP ON A $\frac{26.000}{2}$ B.C.
 $\frac{0.010}{2}$ B | A

EST. WT. = 564 LBS

REV.	DATE	BY	CHK	DESCRIPTION
1	11/27/85			ASSEMBLY
2	11/27/85			ASSEMBLY
3	11/27/85			ASSEMBLY
4	11/27/85			ASSEMBLY
5	11/27/85			ASSEMBLY
6	11/27/85			ASSEMBLY

REV.	DATE	BY	CHK	DESCRIPTION
1	11/27/85			ASSEMBLY
2	11/27/85			ASSEMBLY
3	11/27/85			ASSEMBLY
4	11/27/85			ASSEMBLY
5	11/27/85			ASSEMBLY
6	11/27/85			ASSEMBLY

ITEM #	QTY	DESCRIPTION
1	1	PLATE 1/4" THK ALUM 6061-T6
2	1	PLATE 1/4" THK ALUM 6061-T6
3	1	PLATE 1/4" THK ALUM 6061-T6
4	1	PLATE 1/4" THK ALUM 6061-T6
5	1	PLATE 1/4" THK ALUM 6061-T6
6	1	PLATE 1/4" THK ALUM 6061-T6

REV.	DATE	BY	CHK	DESCRIPTION
1	11/27/85			ASSEMBLY
2	11/27/85			ASSEMBLY
3	11/27/85			ASSEMBLY
4	11/27/85			ASSEMBLY
5	11/27/85			ASSEMBLY
6	11/27/85			ASSEMBLY

REV.	DATE	BY	CHK	DESCRIPTION
1	11/27/85			ASSEMBLY
2	11/27/85			ASSEMBLY
3	11/27/85			ASSEMBLY
4	11/27/85			ASSEMBLY
5	11/27/85			ASSEMBLY
6	11/27/85			ASSEMBLY

REV.	DATE	BY	CHK	DESCRIPTION
1	11/27/85			ASSEMBLY
2	11/27/85			ASSEMBLY
3	11/27/85			ASSEMBLY
4	11/27/85			ASSEMBLY
5	11/27/85			ASSEMBLY
6	11/27/85			ASSEMBLY

REV.	DATE	BY	CHK	DESCRIPTION
1	11/27/85			ASSEMBLY
2	11/27/85			ASSEMBLY
3	11/27/85			ASSEMBLY
4	11/27/85			ASSEMBLY
5	11/27/85			ASSEMBLY
6	11/27/85			ASSEMBLY

REV.	DATE	BY	CHK	DESCRIPTION
1	11/27/85			ASSEMBLY
2	11/27/85			ASSEMBLY
3	11/27/85			ASSEMBLY
4	11/27/85			ASSEMBLY
5	11/27/85			ASSEMBLY
6	11/27/85			ASSEMBLY