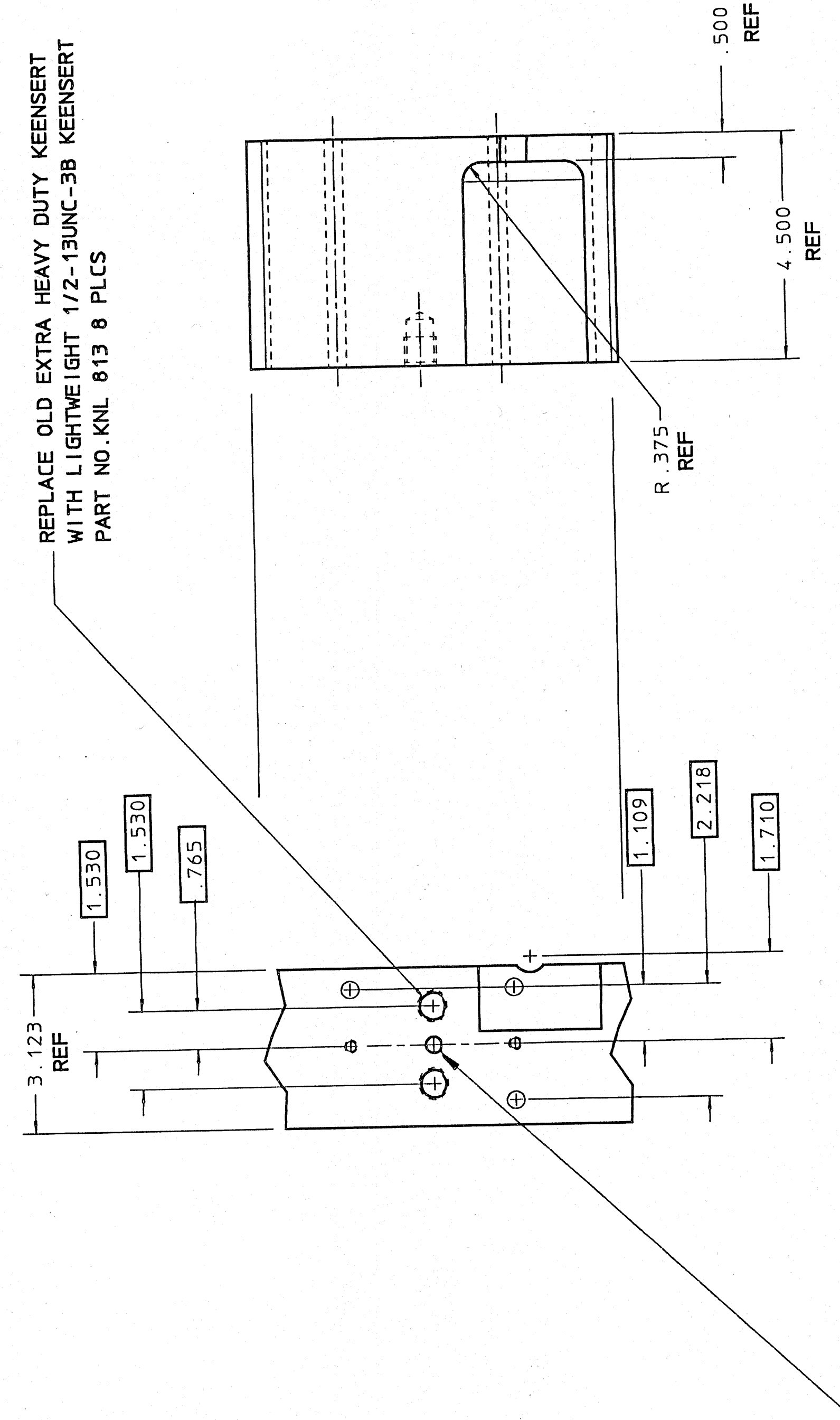


FRONT VIEW

SPOKE FINISH MACHINING DETAIL



DETAIL: MOUNTING POINTS

SCALE: FULL  
 TYP. 4 PLCS

DRILL AND REAM FOR SNUG SLIP FIT  
 OF 5/16 Ø DOWEL PIN .313/.343 DP.  
 [A][C][D][B] Ø.015

- Notes:
- There are right and left spokes which are mirror images of each other.
  - Machine features after Wheel Mockup structure is welded.

REV	DATE	CHK	DATE	DESCRIPTION
E	AWR			7-27-94 CHANGED INSERTS TO 1/2-13UNC-3B
D	RCM			8-13-94 CHANGED TO REFLECT AS BUILT.
C	RCM			8-22-94 CHANGED DIM. 3.640 TO 3.123. ADDED DIM. 1.530 AND CALLOUT FOR 5/16 DOWEL PIN HOLES. CHANGED DIM. 4.07 AND 6.022 TO 6.322 AND ADDED DIM 7.853 & 3.261
B	RCM			7-21-94 CHANGED DIM 59.155 TO 59.172 AND DIM 9.149 TO 9.166 AND CORRECTED DIM 6.034 TO 4.170
				REV DWS CHK DATE

REV	DATE	CHK	DATE	DESCRIPTION
1	1	245126A		WHEEL MOCKUP WELDMENT
				DESCRIPTION
				SHOP ORDERS
				UNIVERSITY OF CALIFORNIA-BERKELEY
				RHIC-STAR TPC
				WHEEL MOCKUP
				MOCKUP FINISH MACHINING
				WHEEL CLEAR
				SCALE 1/2
				DATE 7/21/94
				BY RC WEIDENBACH
				PROJECT NO. 245056
				SR0205
				245056 SHIT 1





