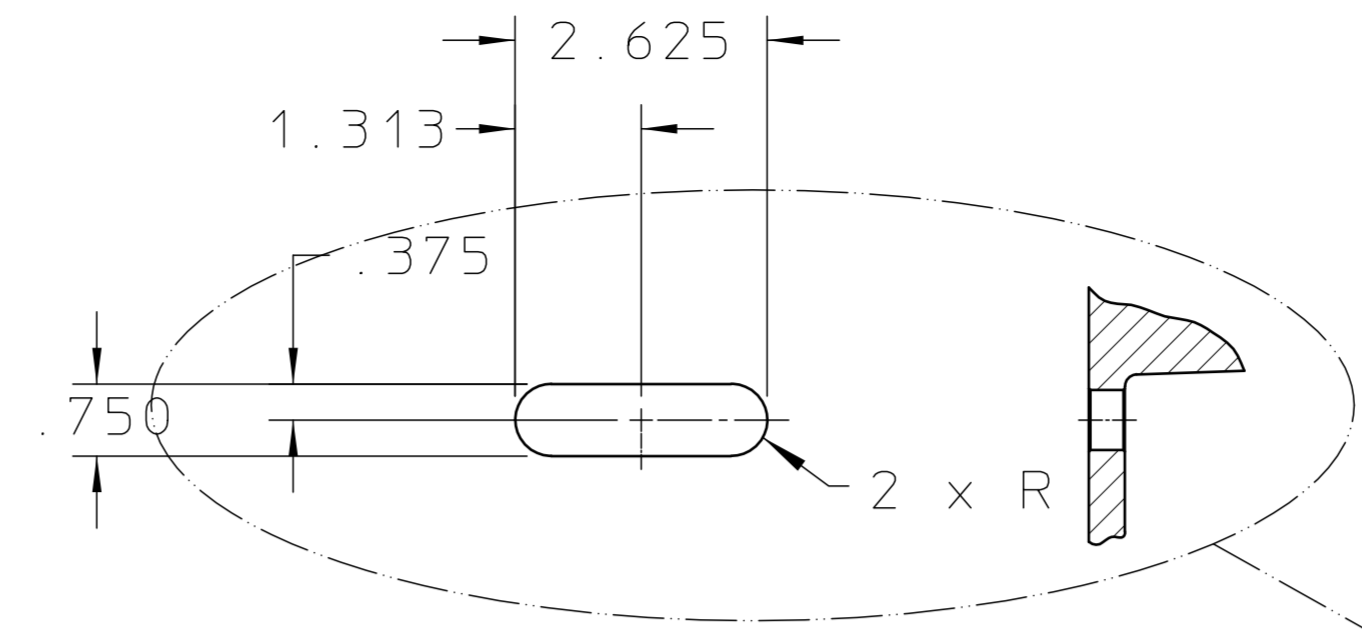
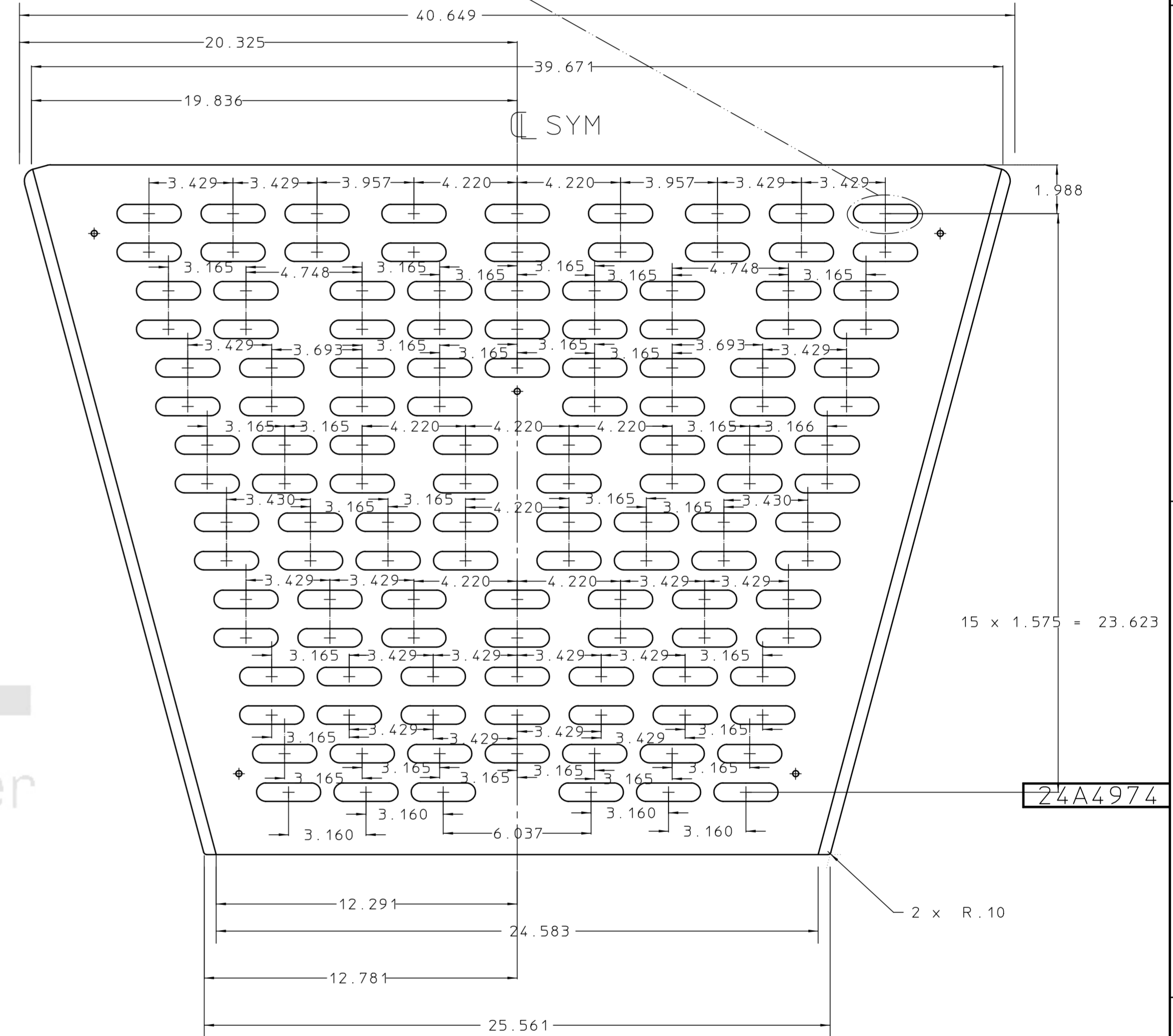
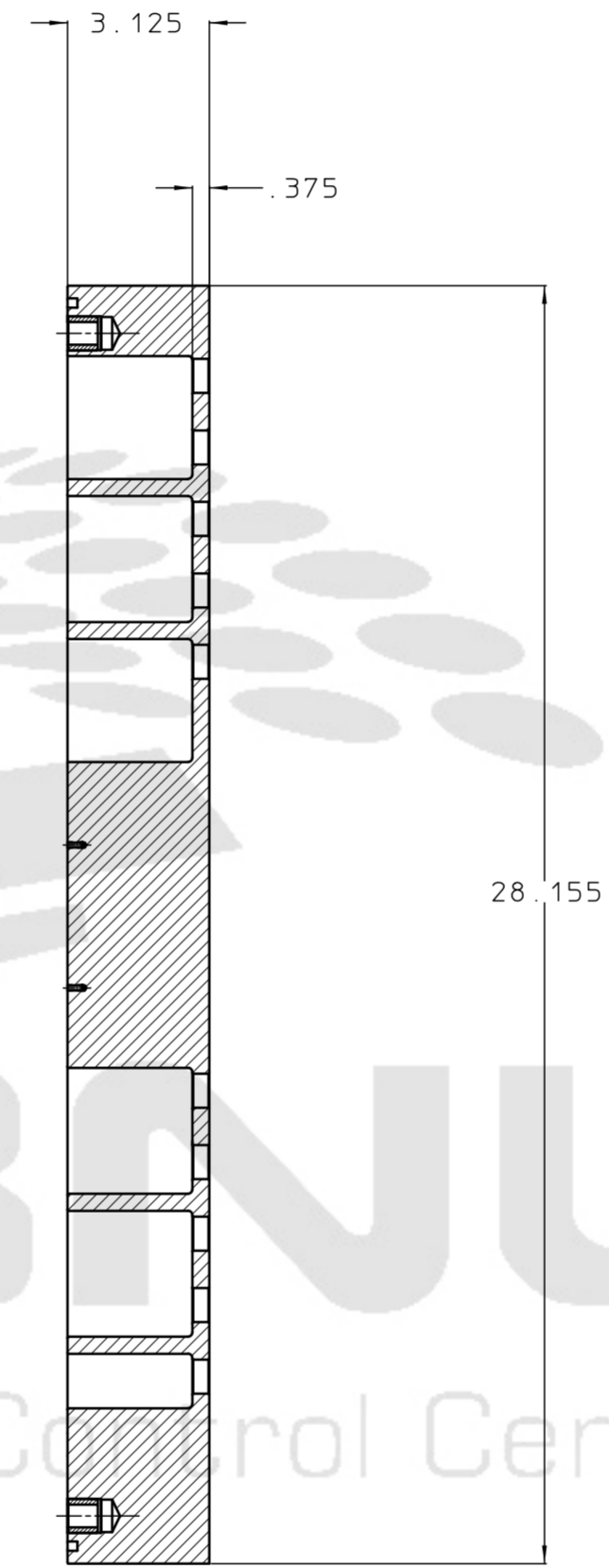
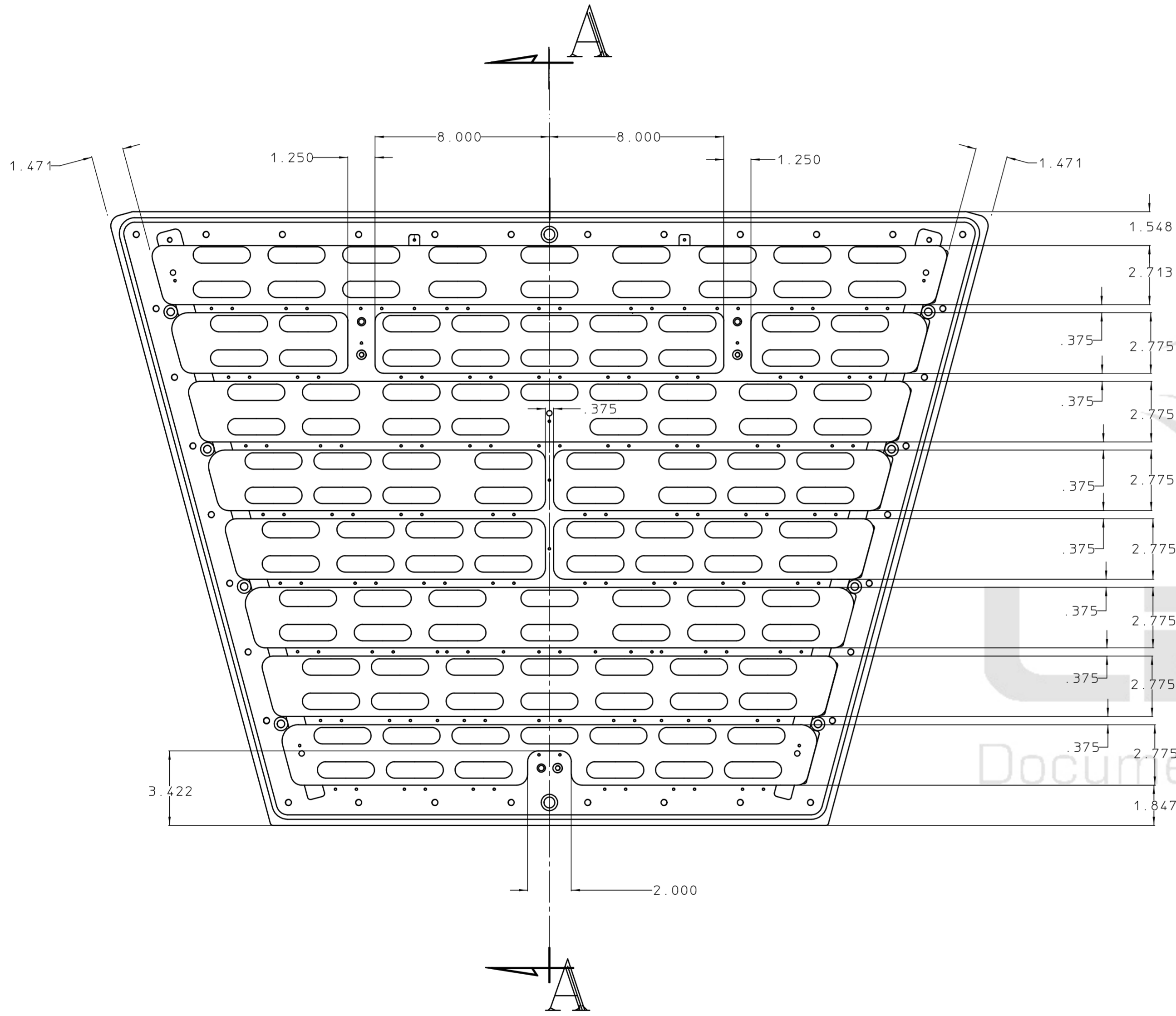


REQ	ITEM	PART NUMBER	DESCRIPTION



Detail

Scale: 1:1
126 Places



24A4974

NOTES

- FOR MANUFACTURING DRAWING SEE DWG # 24A3925G OUTER SECTOR STRONGBACK
- PART IS MADE FROM ALUMINUM, 6061-T651
- WEIGHT OF PART IS APPROXIMATELY 100 lbs.

UNLESS OTHERWISE SPECIFIED		SHOP ORDERS		LAWRENCE BERKELEY LABORATORY							
.X ± -		FRAC. ± -		ACCT. NO.		SERIAL NO.		UNIVERSITY OF CALIFORNIA-BERKELEY			
.XX ± -		ANGLES ± -		DATE ISSD		DATE RECD.		RHIC-STAR-TPC			
.XXX ± -		FINISH		DELIVER TO		SECTOR STRONGBACK					
THREADS ARE CLASS 2				SURFACE TREATMENT				OUTER SECTOR OUTLINE DIMENSION			
CHAMFER ENDS OF ALL SCREW THREADS 30°				DEGREASE				PATENT CLEAR		DWG. TYPE	
CUT 1.5 PITCH THRO RELIEF WITH ROUND NOSE TOOL ON MACHINED CUT THREADS.				TAG				DIAGRAM		SCALE 1:4	
BREAK EDGES .016 MAX. ON MACHINED WORK				BY J. BOEHM		DATE 94-03-03		MTCROFILMED		DWG. NO. 24A4974	
REMOVE BURRS WELD SPLATTER & LOOSE SCALE				CHK: J. BERCOVIT		DATE 94-03-03		DESIGN ACCT. NO. 8052-246R-02-04		REV. -	
REFERENCES: ANSI Y14.5 & B46.1.				REV		DWG		CHK		ZONE	
				CHANGES							