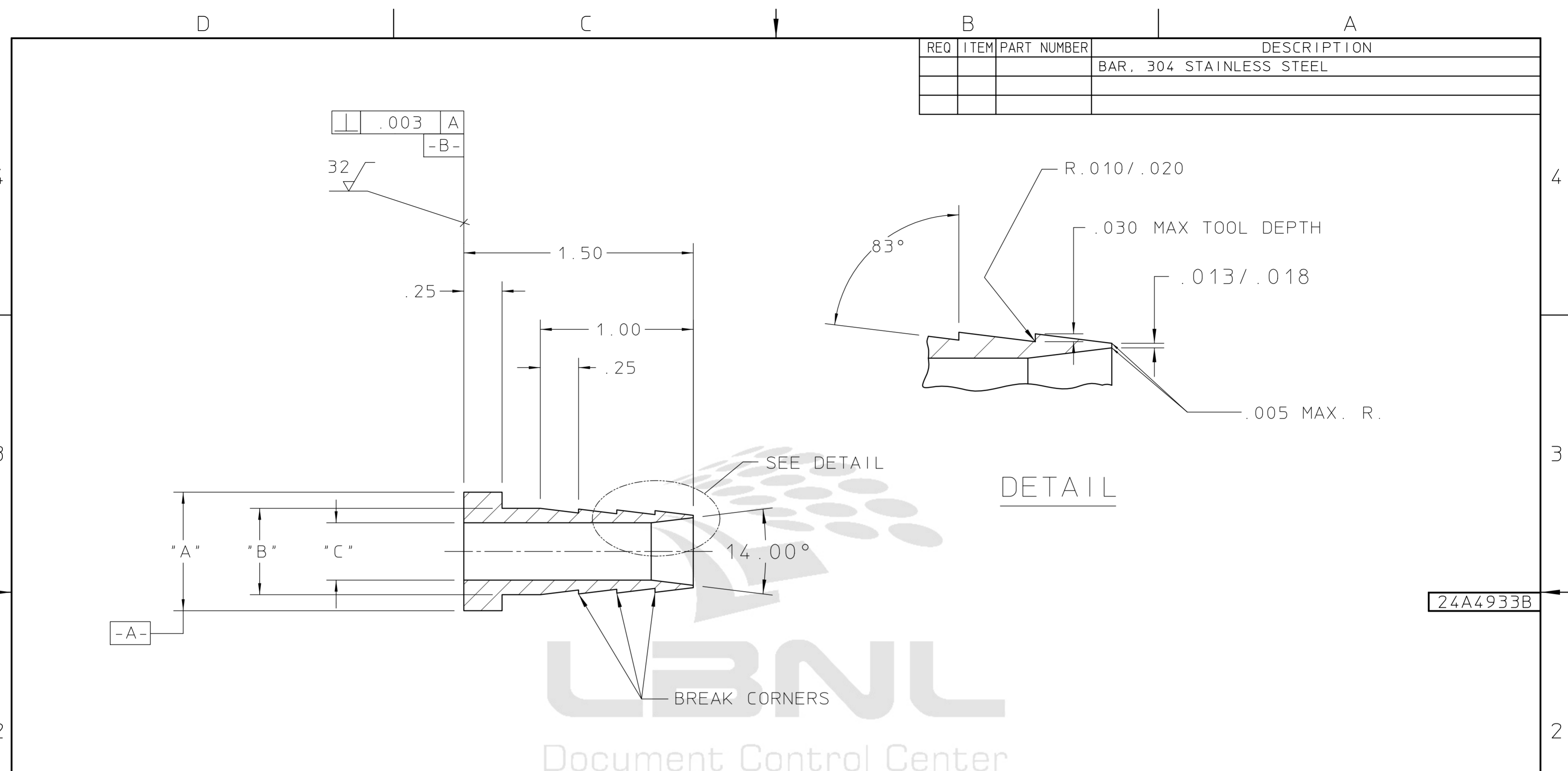


REQ	ITEM	PART NUMBER	DESCRIPTION
			BAR, 304 STAINLESS STEEL



24A4933B

NOTE:

1. ALL DIAMETERS TO BE CONCENTRIC WITH DIAMETER -A- WITHIN .005 REGARDLESS OF SIZE
2. PASSIVATE BY SOAKING IN NITRIC ACID FOR 1 HOUR. (TEMP. 35°C, CONCENTRATION 20% TO 40%). FLUSH THOROUGHLY WITH CLEAR WATER.

PART NO	"A" DIA	"B" DIA	"C" DIA	TUBE DIA
24A4933-2	.400	.315	.188	Ø.25
24A4933-1	.660	.565	.415	Ø.50

REV	DWG	CHK	ZONE	DATE	CHANGES	TOLERANCES	UNLESS OTHERWISE SPECIFIED	SHOP ORDERS	LAWRENCE BERKELEY LABORATORY
B	JB		940808		Ø.660 was Ø.600	.X ±	FRAC. ±	ACCT. NO.	UNIVERSITY OF CALIFORNIA-BERKELEY
A	JB		940727		CHANGED A, B, C DIAS	.XX ± .020	ANGLES ±	DATE ISSD	
					CHANGES	.XXX ± .005	FINISH 125	NO. REQD.	RHIC-STAR-TPC
								DELIVER TO	SECTOR MANIFOLD ASSEMBLY
								THREADS ARE CLASS 2	MANIFOLD CONNECTOR FITTING NIPPLE
								CHAMFER ENDS OF ALL SCREW THREADS 30°	PATENT CLEAR
								CUT 1.5 PITCH THRO RELIEF WITH ROUND NOSE TOOL ON MACHINE CUT THREADS.	DWG. TYPE
								BREAK EDGES .016 MAX. ON MACHINED WORK	SHOWN ON
								REMOVE BURRS WELD SPLATTER & LOOSE SCALE	SCALE 2X
								REFERENCES: ANSI Y14.5 & B46.1.	DO NOT SCALE PRINTS
									DWG. NO.
									24A4933
									SIZE
									B
									REV.