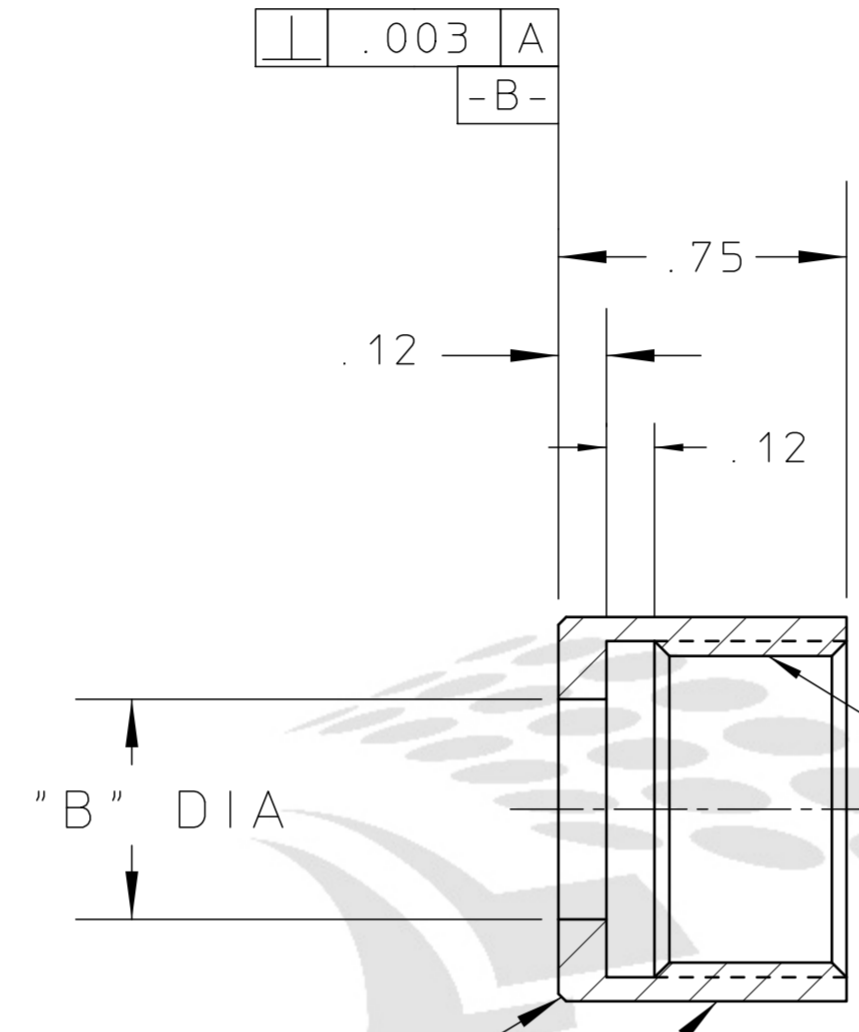
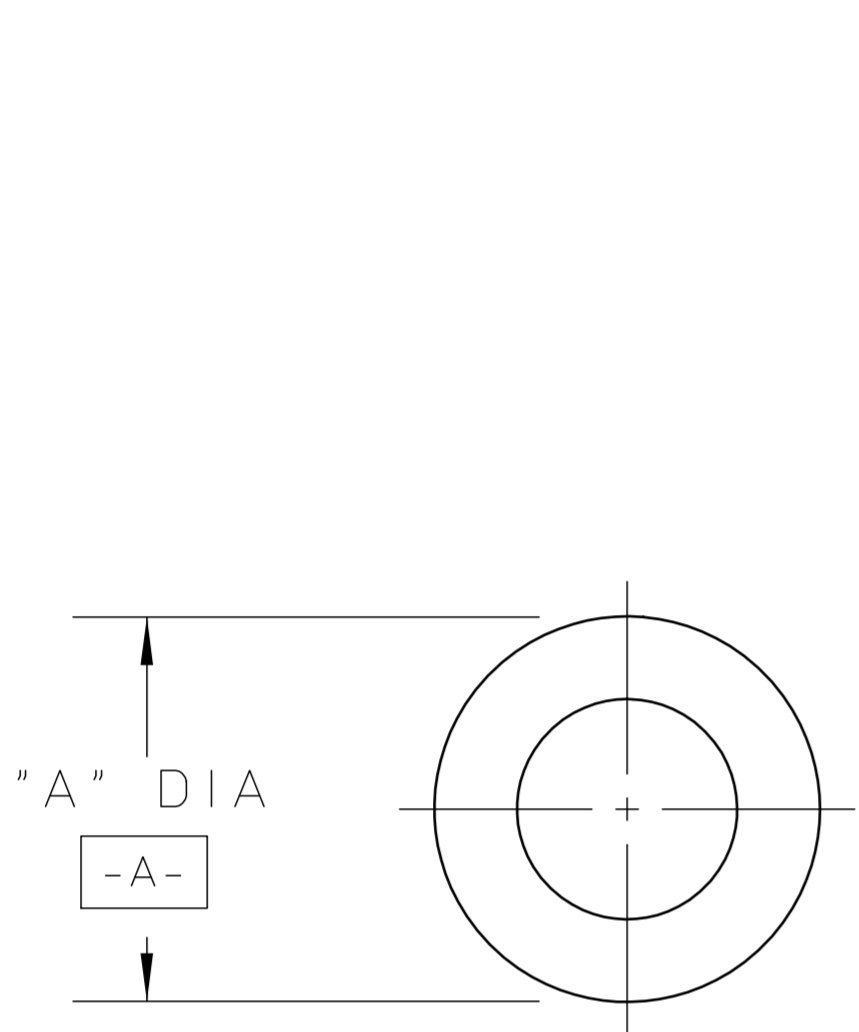


REQ	ITEM	PART NUMBER	DESCRIPTION
			BAR, BRASS, UNS ALLOY C36000



.02 x 45°
MEDIUM KNURL ON O.D.

NOTE:

1. ALL DIAMETERS TO BE CONCENTRIC WITH DIAMETER -A- WITHIN .005 REGARDLESS OF SIZE

24A4913A

24A4913-2	.75	.325	.500-20
24A4913-1	1.00	.575	.750-16
PART NO	"A" DIA	"B" DIA	THREAD "C"
UNLESS OTHERWISE SPECIFIED TOLERANCES .X ± FRAC. ± .XX ± .020 ANGLES ± .XXX ± .005 FINISH 125√			
THREADED ARE CLASS 2 CHAMFER ENDS OF ALL SCREW THREADS 30°. CUT 1.5 PITCH THRO RELIEF WITH ROUND NOSE TOOL ON MACHINE CUT THREADS. BREAK EDGES .016 MAX. ON MACHINED WORK REMOVE BURRS WELD SPLATTER & LOOSE SCALE REFERENCES: ANSI Y14.5 & B46.1.		SHOP ORDERS ACCT. NO. SERIAL NO. DATE ISSD DATE RECD. NO. RECD. DELIVER TO	
SURFACE TREATMENT DEGREASE IDENT. METH. BAG & TAG DWG. BY J. BOEHM DATE 94-06-13 CHK. BY J. BERCOVITZ DATE 94-06-13		LAWRENCE BERKELEY LABORATORY UNIVERSITY OF CALIFORNIA-BERKELEY RHIC-STAR-TPC SECTOR MANIFOLD ASSEMBLY MANIFOLD CONNECTOR FITTING NUT	
REV	DWG	CHK	ZONE
A	JB		940727
			CHANGED 'B' DIA'S
			CHANGES
PATENT CLEAR		DWG. TYPE	SHOWN ON
MICROFILMED		C-DETAIL	SCALE 2X
DESIGN ACCT. NO. 8052-24		CATEGORY CODE SR-02-04	DWG. NO. 24A4913
		DO NOT SCALE PRINTS	SIZE A

REV	DWG	CHK	ZONE	DATE	CHANGES
A	JB			940727	CHANGED 'B' DIA'S
					CHANGES