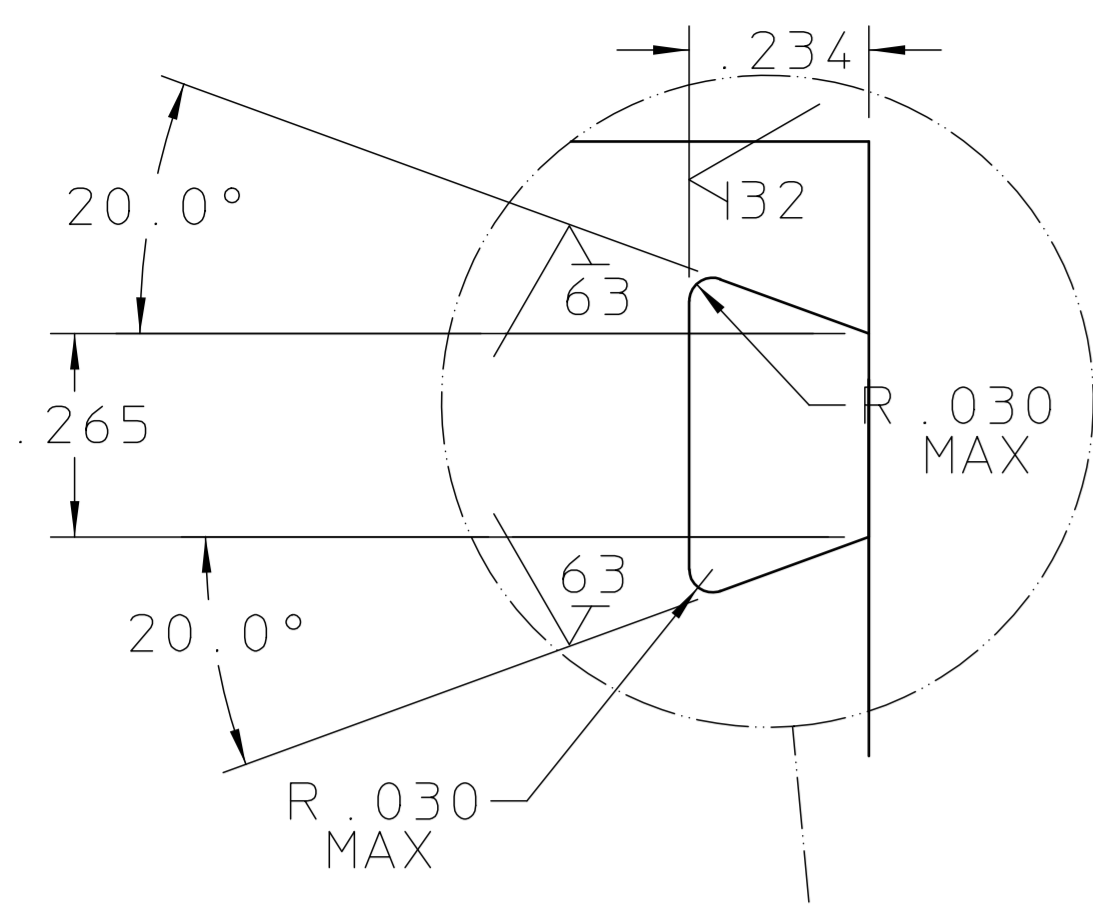


RECD	ITEM	PART NO.	DESCRIPTION
1	1		PLATE, ALU 6061-T6
1	2	24A0212C-1	SLEEVE, PINHOLE
6	3	24A4242A	WIMOUNT THRD SUPPORT, #10-32
1	4	24A4252A	WIMOUNT THRD SUPPORT, .25-20



6 x .3125-18UNC-2B TAP x .65 DEEP  
Maximum Tap Drill Depth .90  
DO NOT DRILL THRU  
⊕ .010 ⊗ A | B | C

Ø.734 x 1.00 DEEP  
Ø.7500±.0002 x .75 DEEP  
C'SINK Ø.800 x 82°  
PRESSFIT ITEM (2) SLEEVE  
.010-.020 BELOW SURFACE  
BORE OUT SLEEVE to Ø.5003±.0002  
⊕ .010 ⊗ A | B | C

**Section D-D**  
Scale: 1:1

**Section C-C**  
Scale: 1:1

**Detail 1**  
Scale: 1:1

12 x #6(.138)-32UNC-2B  
TAP x .35 DEEP  
C'SINK Ø.188 x 82°  
⊕ .010 ⊗ A | B | C

OVERALL  
O-RING GROOVE LOCATION  
INTERSECTION POINT OF SURF -B- & -E-

#6(.138)-32UNC-2B x .50 DP

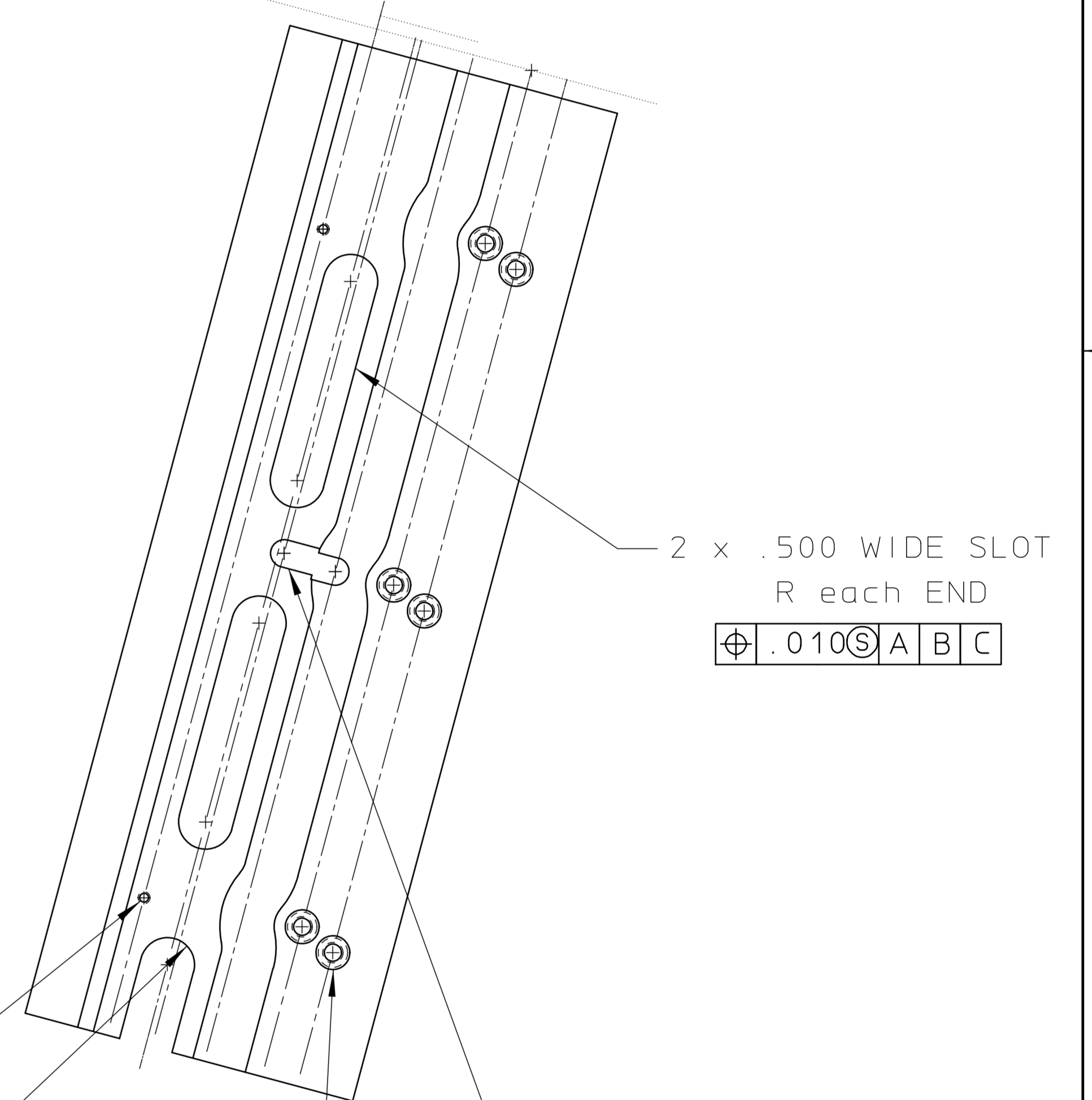
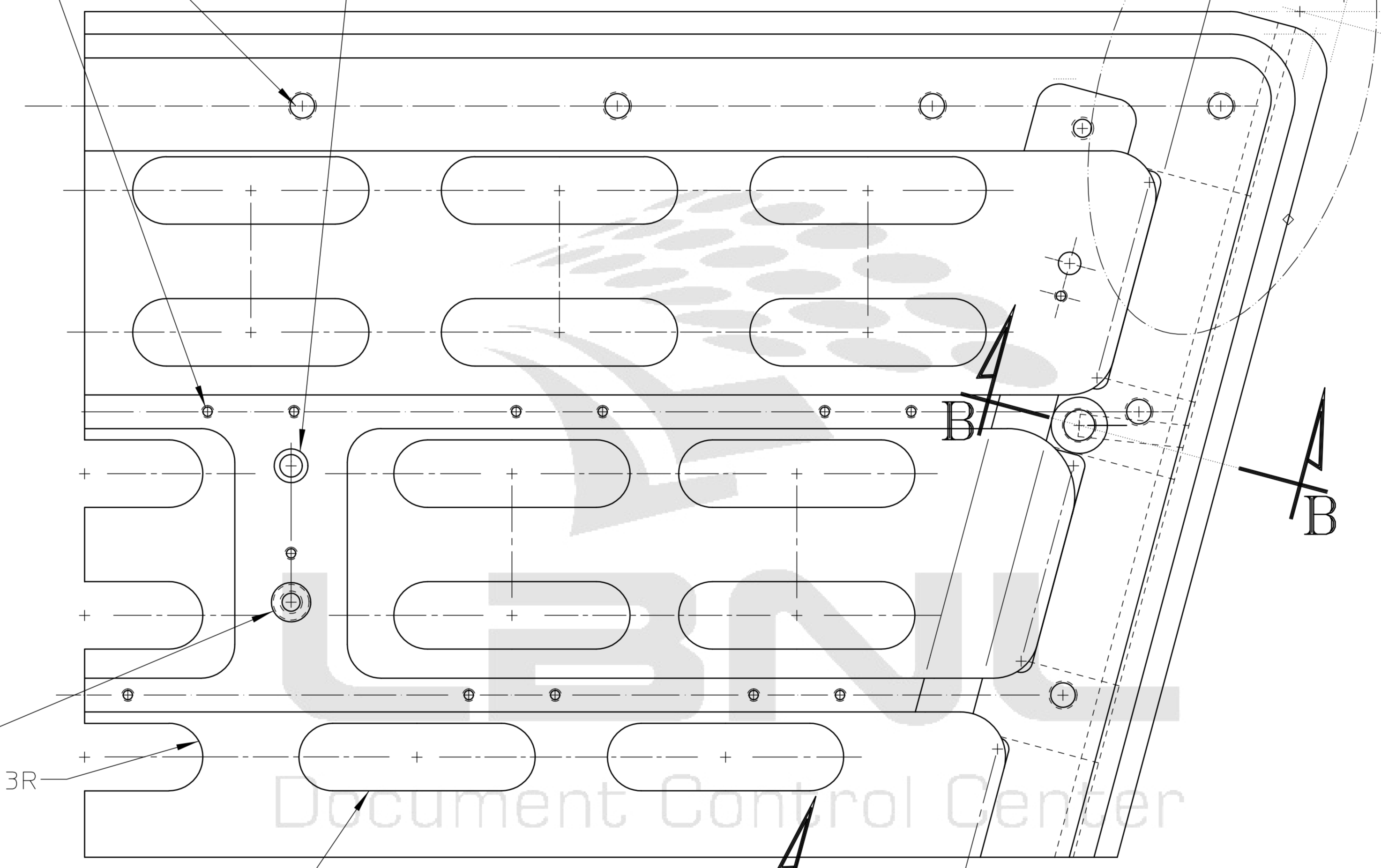
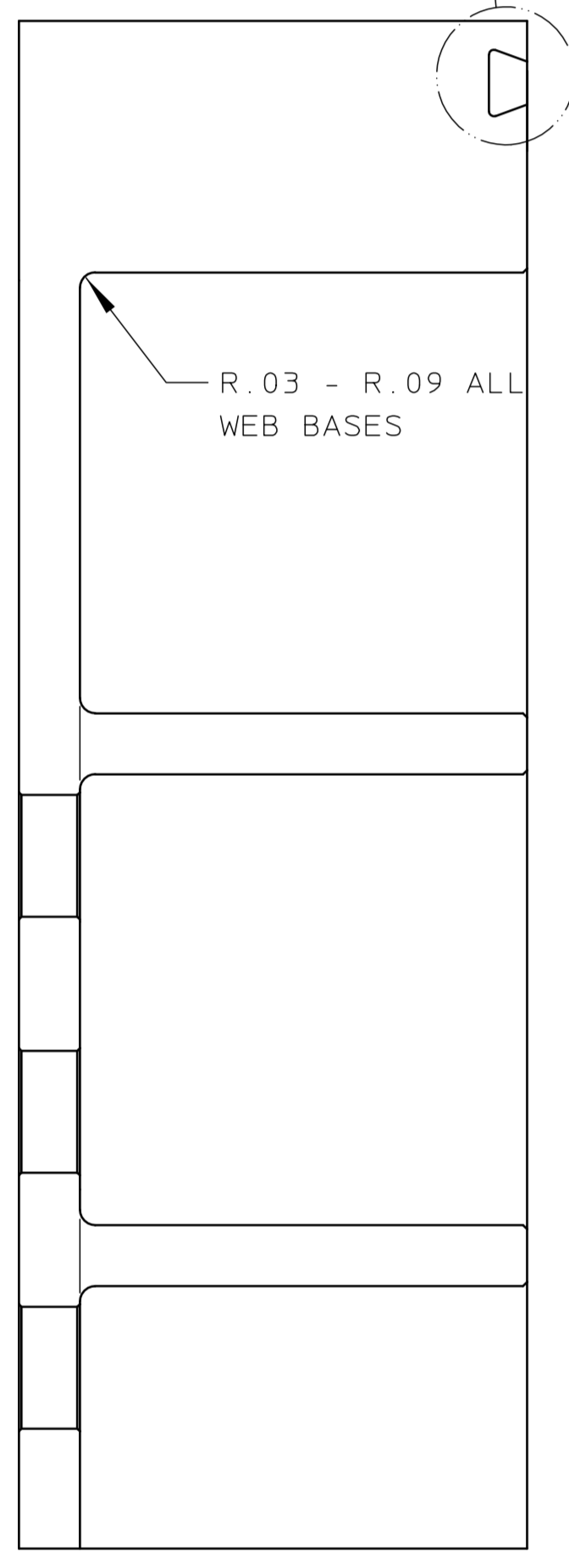
-A-

-B-

-C-

See Detail 1

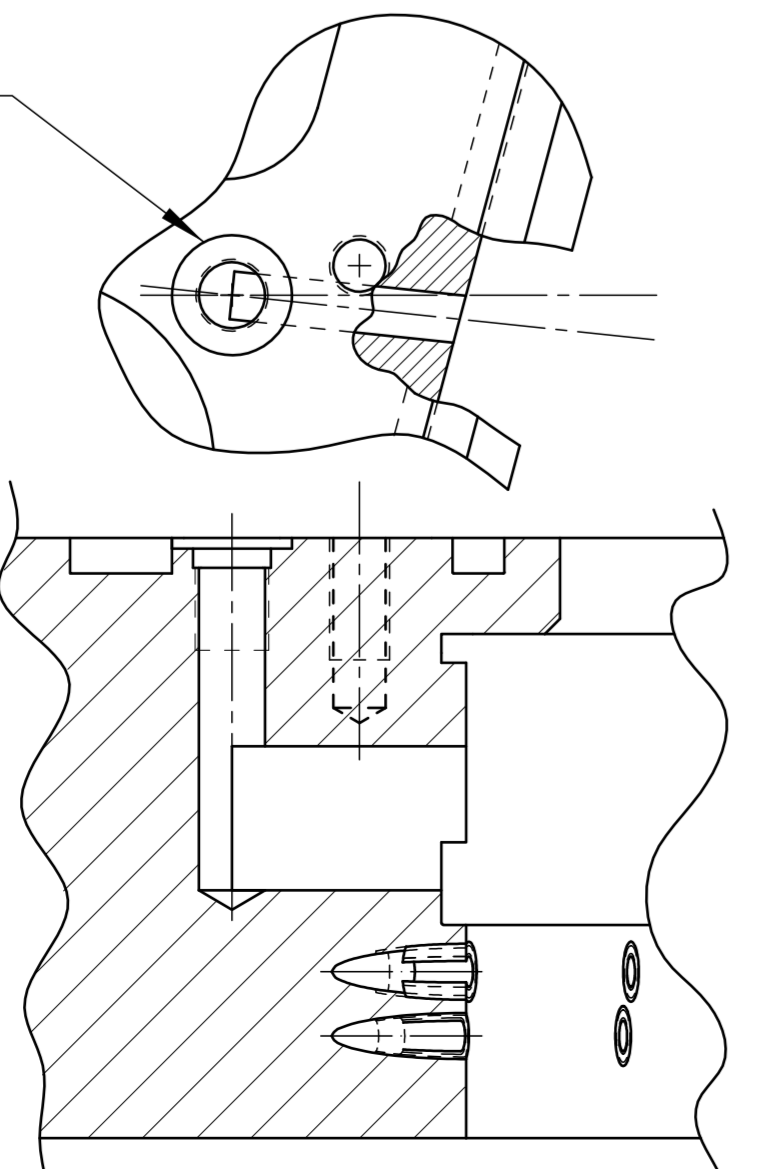
INTERSECTION LINE  
of DATUM PLANE -B-  
and DATUM PLANE -F-



Ø.397 x 1.0 DEEP  
.438-14UNC-2B x .50 DEEP  
C'SINK Ø.478 x 82°  
INSTALL ITEM (4) INSERT  
RETAIN IN PLACE WITH LOCTITE  
.010 to .020 BELOW SURFACE  
⊕ .010 ⊗ A | B | C

12 x .750 WIDE x 2.625 LONG SLOT  
R each END  
⊕ .010 ⊗ A | B | C

Ø.344 to DEPTH SHOWN  
.375-32UNEF-2B to DEPTH SHOWN  
C'BORE Ø.380 to DEPTH SHOWN  
C'BORE Ø.625 to DEPTH SHOWN



**SECTION B-B**

SCALE: 1/1  
4 PLACES - AS SHOWN  
4 PLACES - MIRROR IMAGE

**VIEW A-A**

SCALE: 1/1

REV	DWG	CHK	ZONE	DATE	CHANGES	UNLESS OTHERWISE SPECIFIED	SHOP ORDERS	LAWRENCE BERKELEY LABORATORY
CO	X ± .1	ACCT.	NO.	SERIAL				UNIVERSITY OF CALIFORNIA-BERKELEY
XX	± .02	DATE	ISSD	DATE	NO.			RHIC-STAR-TPC
XX	± .005	FINISH	125/7					DEMONSTRATION SECTOR
THREADS ARE CLASS 2		UNTIL TAG						STRONGBACK SECTION
CHAMFER ENDS OF ALL SCREW THREADS 30°								
CUT 1.5 PITCH THRO RELIEF WITH ROND NOSE TOOL								
ON MACHINE CUT THREADS								
BREAK EDGES .016 MAX. ON MACHINED WORK								
REMOVE BURRS WELD SPATTER & LOOSE SCALE								
REFERENCES: ANSI Y14.5 & B4.1								
REV	DWG	CHK	ZONE	DATE	CHANGES			