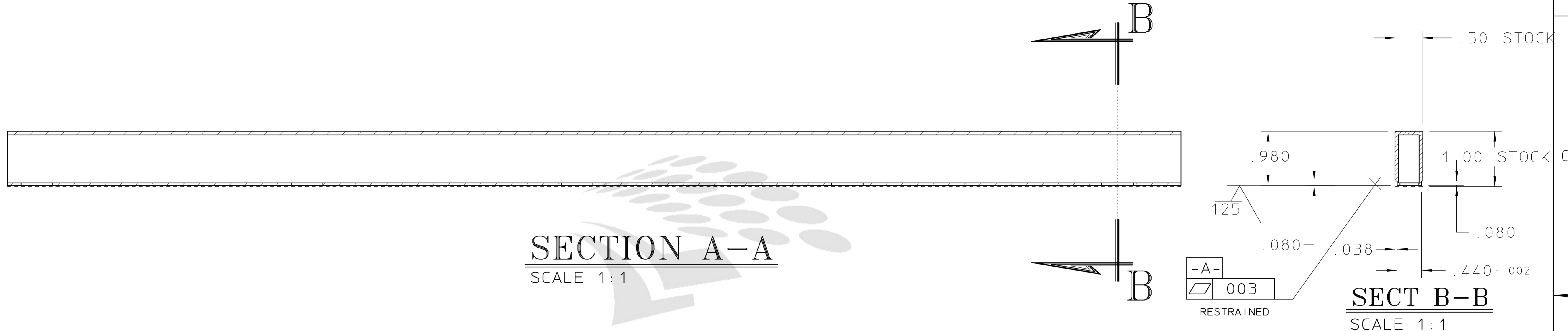
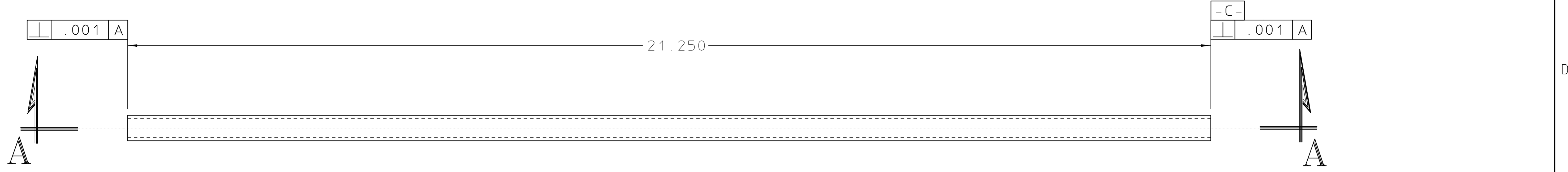
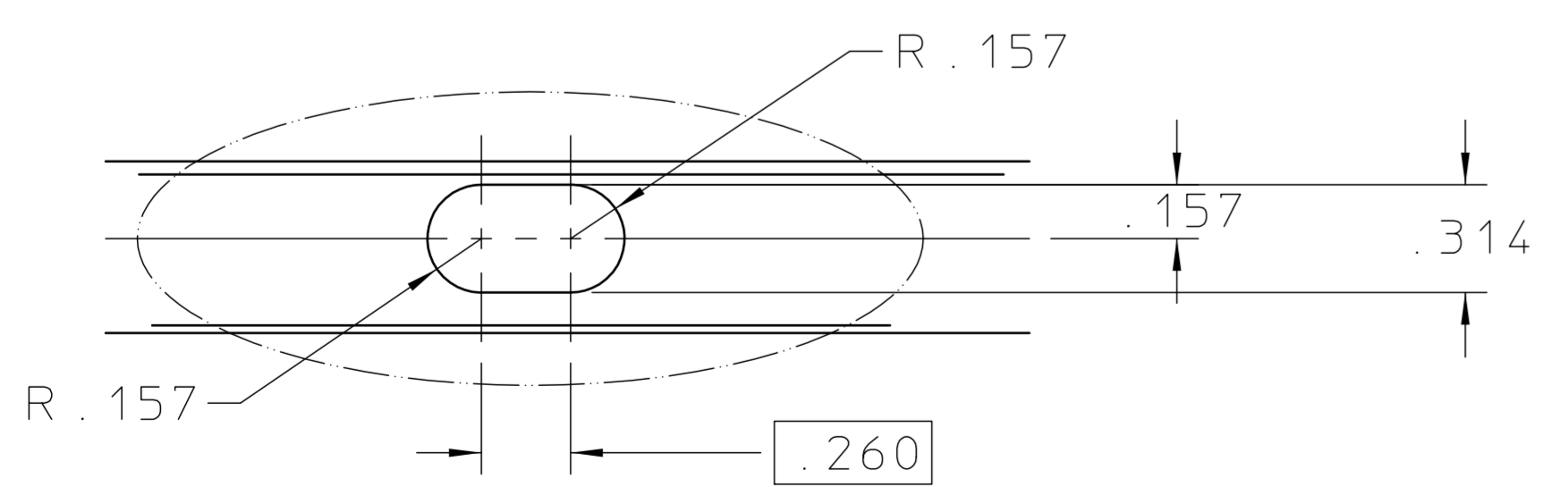
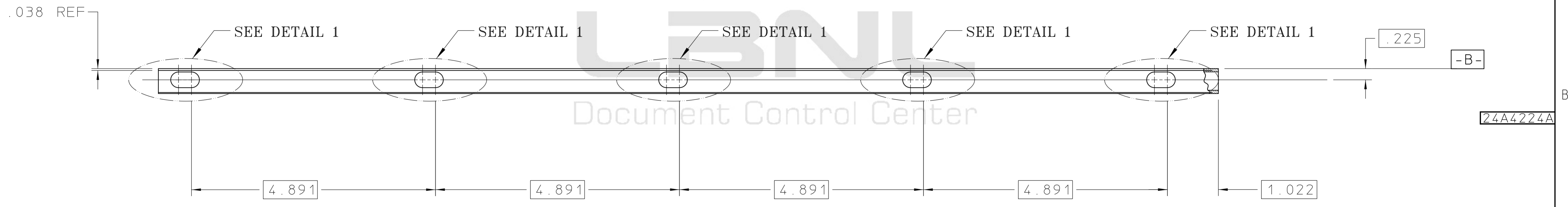


REQ	ITEM	PART NUMBER	DESCRIPTION
			TUBE, RECTANGULAR, 1.0' x .50' x .065' WALL, ALU 6061-T6



SECTION A-A
SCALE 1:1

SECT B-B
SCALE 1:1



DETAIL 1
4 PLACES
SCALE 2:1

- NOTES:
1. DEGREASE PARTS AFTER MACHINING
 2. AFTER PARTS HAVE BEEN MANUFACTURED AND INSPECTED
 - A. CLEAN PARTS BY THE PHOSPORIC ACID ANODIZING METHOD (ASTM D3933-80)
 - B. COAT WITHIN 4 hrs WITH DEXTER-HYSOL PRIMER #EA 9210 B

UNLESS OTHERWISE SPECIFIED				SHOP ORDERS			LAWRENCE BERKELEY LABORATORY				
TOLERANCES		.X ± .1		ACCT. NO.	SERIAL NO.		UNIVERSITY OF CALIFORNIA-BERKELEY				
.XX ± .02		ANGLES ± 1°		DATE ISSD	DATE RECD.	NO. RECD.	RHIC-STAR-TPC				
.XXX ± .005		FINISH 125/7		DELIVER TO			OUTER SECTOR COOLING MANIFOLD				
THREADS ARE CLASS 2				SURFACE TREATMENT			UPPER ADBOND HEADER, RIGHT				
CHAMFER ENDS OF ALL SCREW THREADS 30°				IDENT. TAG			PATENT CLEAR	DWG. TYPE	SHOWN ON	SCALE	DO NOT SCALE
CUT 1.5 PITCH THRO RELIEF WITH ROUND NOSE TOOL				METH.			ASSEMBLY	00X0000	FULL	PRINTS	
ON MACHINE CUT THREADS.				DWG. J. BOEHM	DATE 94-03-16	MICROFILMED	DESIGN ACCT. NO.	CATEGORY CODE	24A4224	REV. A	
BREAK EDGES .016 MAX. ON MACHINED WORK				CHK. J. BERCOVITZ	DATE 94-03-16	SR-02-04					
REMOVE BURRS WELD SPLATTER & LOOSE SCALE				REFERENCES: ANSI Y14.5 & B46.1.							
REV	DWG	CHK	ZONE	DATE	CHANGES						