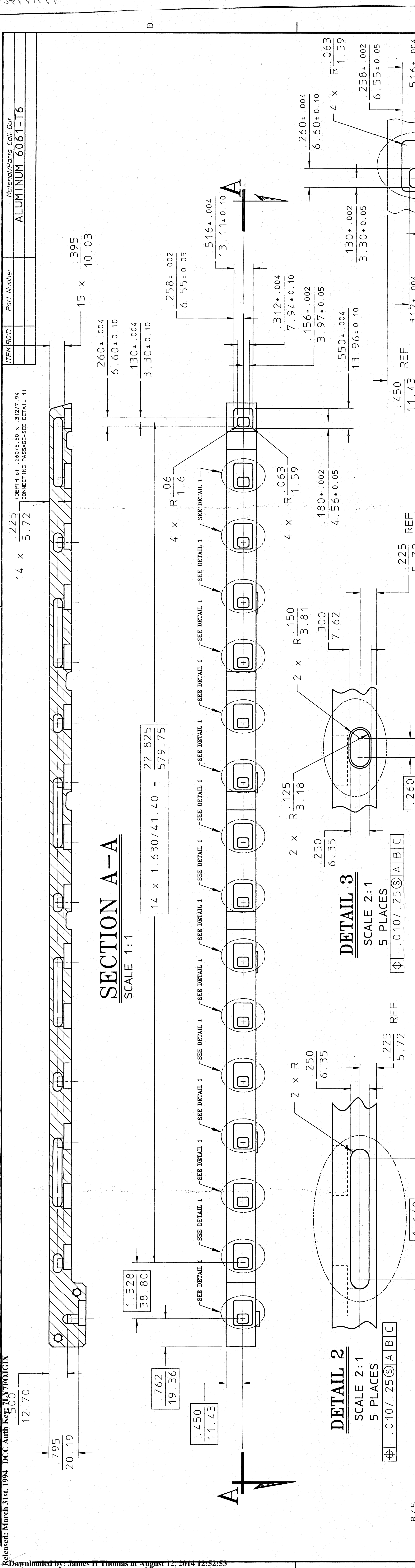


ITEM ROD Part Number  
 225 (DEPTH of .260/6.60 x .312/7.94  
 CONNECTING PASSAGE-SEE DETAIL 1)

**SECTION A-A**  
 SCALE 1:1



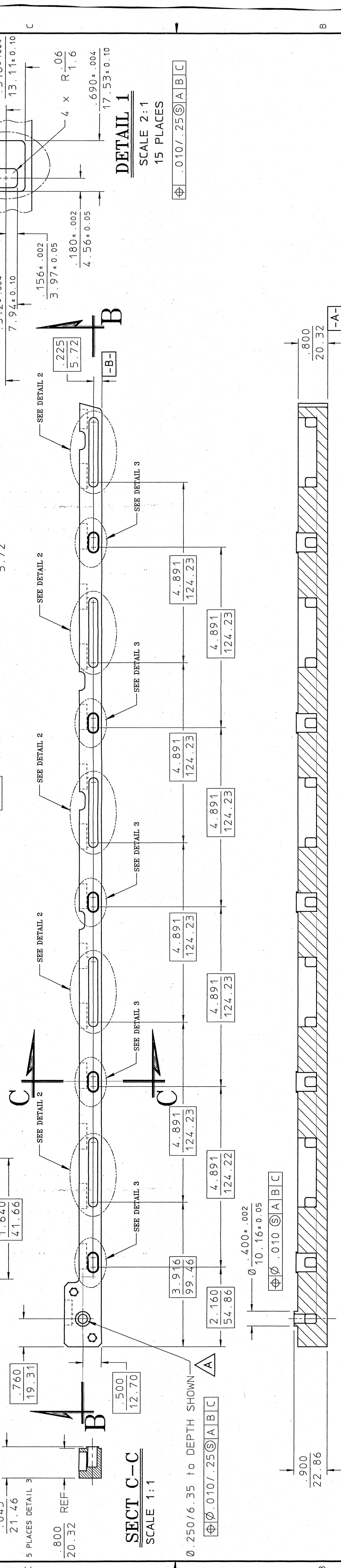
$14 \times 1.630 / 41.40 = \frac{22.825}{579.75}$

**DETAIL 2**  
 SCALE 2:1  
 5 PLACES  
 $\varnothing .010 / .25 \text{ (A|B|C)}$

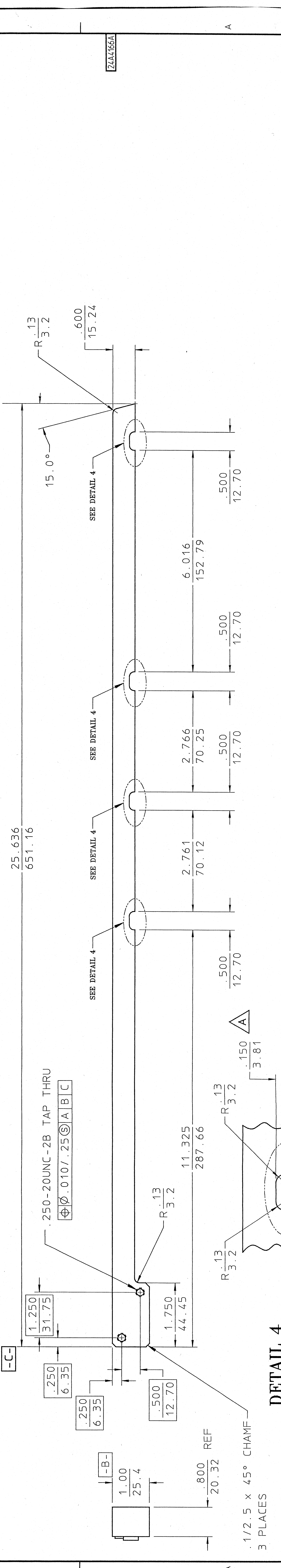
**DETAIL 3**  
 SCALE 2:1  
 5 PLACES  
 $\varnothing .010 / .25 \text{ (A|B|C)}$

**SECT C-C**  
 SCALE 1:1

**DETAIL 1**  
 SCALE 2:1  
 15 PLACES  
 $\varnothing .010 / .25 \text{ (A|B|C)}$

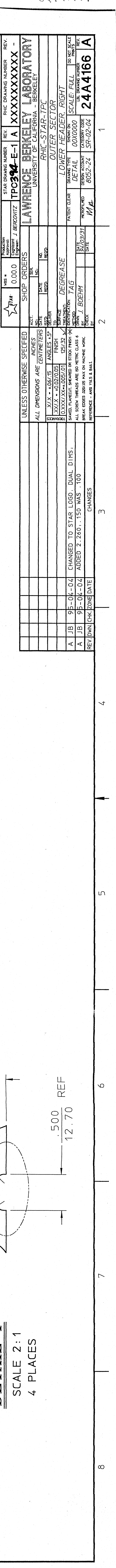


**SECTION B-B**  
 SCALE 1:1



**DETAIL 4**  
 SCALE 2:1  
 4 PLACES

**DETAIL 1**  
 SCALE 2:1  
 15 PLACES



| REV | DATE     | BY        | CHK | APP | DESCRIPTION                      |
|-----|----------|-----------|-----|-----|----------------------------------|
| A   | 95-04-04 | J.B.      |     |     | CHANGED TO STAR LOGO. DUAL DIMS. |
| A   | 95-04-04 | J.B.      |     |     | ADDED 2.260" .150 WAS .100       |
| REV | DATE     | BY        | CHK | APP | DESCRIPTION                      |
| 1   | 02/29/91 | J. BOEHRM |     |     | REVISED                          |
| 2   | 02/29/91 | J. BOEHRM |     |     | REVISED                          |

|                     |     |                    |     |
|---------------------|-----|--------------------|-----|
| STAR DRAWING NUMBER | REV | RHC DRAWING NUMBER | REV |
| IPC394-E-1          | A   | XXXXXXX            | -   |

**LAWRENCE BERKELEY LABORATORY**  
 UNIVERSITY OF CALIFORNIA - BERKELEY

RHC-STAR-IPC  
 OUTER SECTOR  
 LOWER HEADER RIGHT  
 DETAIL 000000 SCALE FULL  
 DRAWN BY: J. BOEHRM  
 CHECKED BY: J. BOEHRM  
 DATE: 02/29/91  
 PROJECT: 244166 A