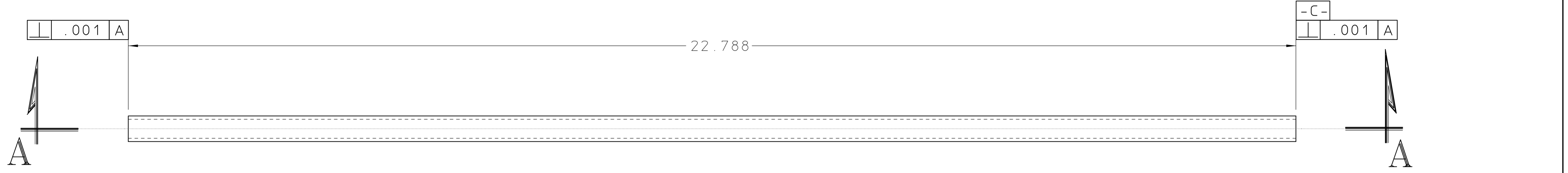
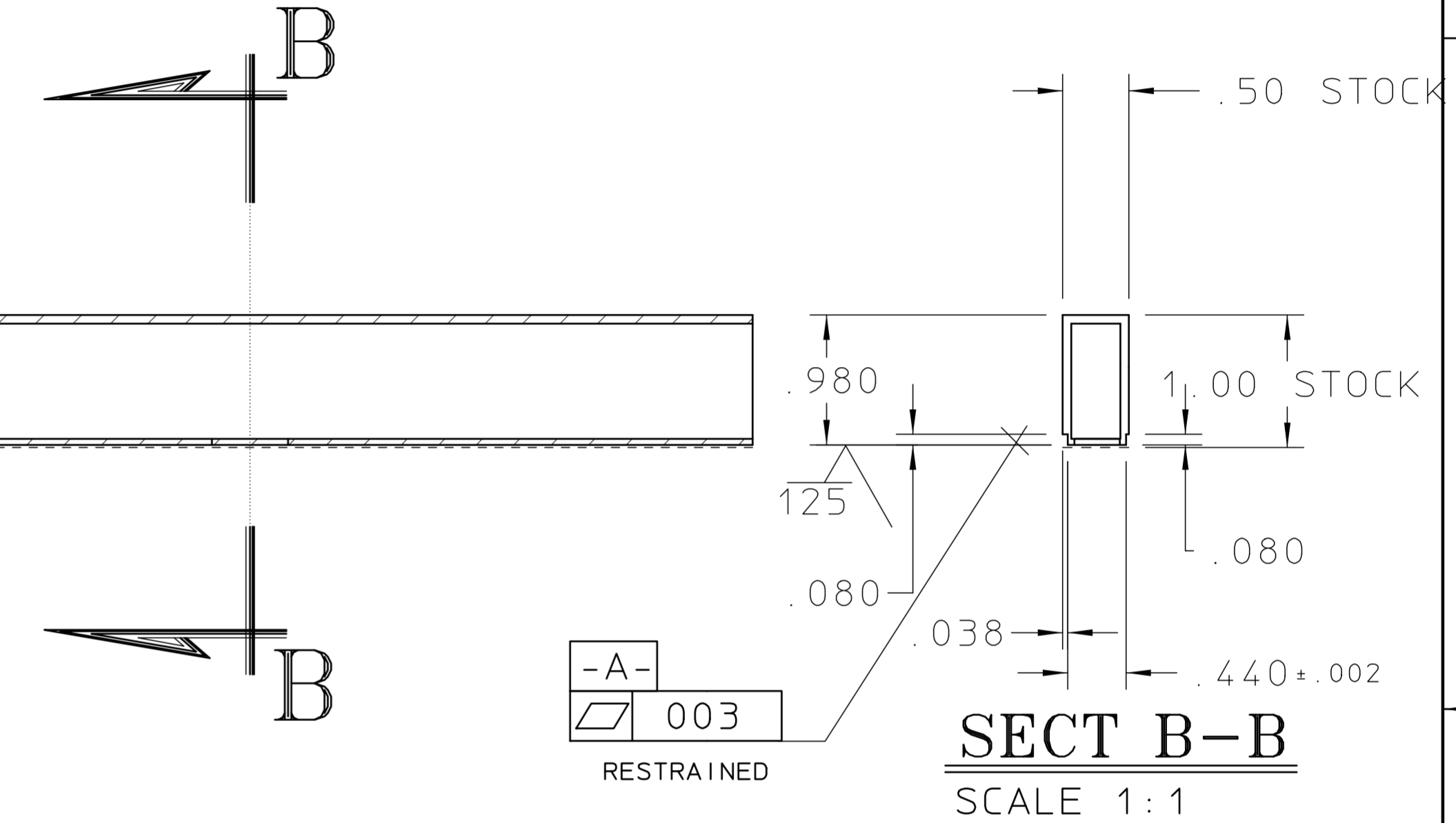


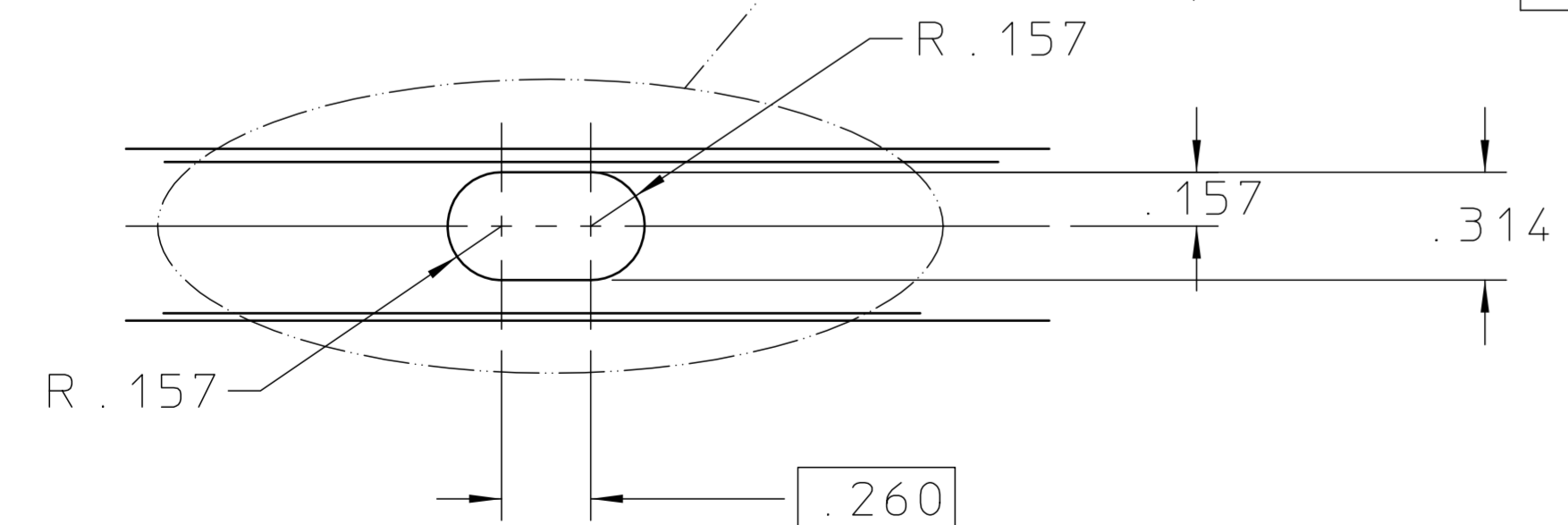
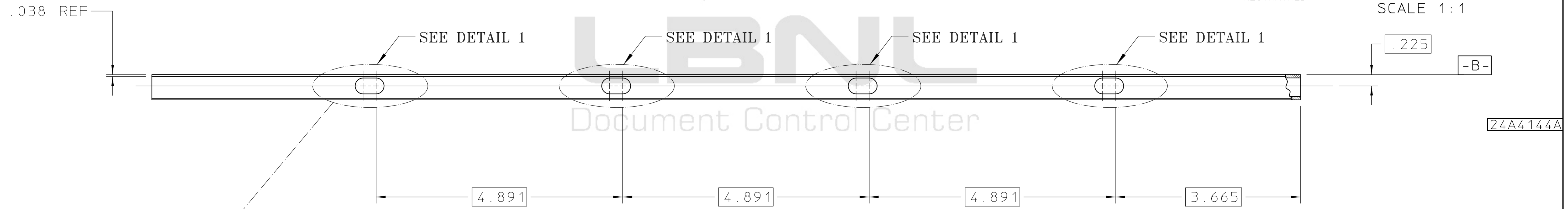
| REQ | ITEM | PART NUMBER | DESCRIPTION |
|-----|------|--|-------------|
| | | TUBE, RECTANGULAR, 1.0" x .50" x .065" WALL, ALU 6061-T6 | |



SECTION A-A
SCALE 1:1



SECT B-B
SCALE 1:1



DETAIL 1
4 PLACES
SCALE 2:1

- NOTES:
- DEGREASE PARTS AFTER MACHINING
 - AFTER PARTS HAVE BEEN MANUFACTURED AND INSPECTED
 - A. CLEAN PARTS BY THE PHOSPORIC ACID ANODIZING METHOD (ASTM D3933-80)
 - B. COAT WITHIN 4 hrs WITH DEXTER-HYSOL PRIMER #EA 9210 B

| UNLESS OTHERWISE SPECIFIED | | | | SHOP ORDERS | | | LAWRENCE BERKELEY LABORATORY | | | | |
|--|-----|-------------|------|-------------------|------------|-----------|-----------------------------------|-----------|----------|---------|---------------------|
| TOLERANCES | | ANGLES ± 1° | | ACCT. NO. | SERIAL NO. | | UNIVERSITY OF CALIFORNIA-BERKELEY | | | | |
| .X ± .1 | | | | DATE ISSD | DATE RECD. | NO. RECD. | RHIC-STAR-TPC | | | | |
| .XX ± .02 | | | | DELIVER TO | | | OUTER SECTOR COOLING MANIFOLD | | | | |
| .XXX ± .005 | | FINISH 125 | | SURFACE TREATMENT | | | UPPER ADBOND HEADER, LEFT | | | | |
| THREADS ARE CLASS 2 | | | | IDENT. TAG | | | PATENT CLEAR | DWG. TYPE | SHOWN ON | SCALE | DO NOT SCALE PRINTS |
| CHAMFER ENDS OF ALL SCREW THREADS 30° | | | | DATE | | | ASSEMBLY | 00X0000 | FULL | | |
| CUT 1.5 PITCH THRO RELIEF WITH ROUND NOSE TOOL | | | | DATE | | | DATE | 8052-24 | 8052-24 | 24A4144 | A |
| ON MACHINE CUT THREADS. | | | | DATE | | | DATE | 8052-24 | 8052-24 | 24A4144 | A |
| BREAK EDGES .016 MAX. ON MACHINED WORK | | | | DATE | | | DATE | 8052-24 | 8052-24 | 24A4144 | A |
| REMOVE BURRS WELD SPLATTER & LOOSE SCALE | | | | DATE | | | DATE | 8052-24 | 8052-24 | 24A4144 | A |
| REFERENCES: ANSI Y14.5 & B46.1. | | | | DATE | | | DATE | 8052-24 | 8052-24 | 24A4144 | A |
| REV | DWG | CHK | ZONE | DATE | CHANGES | | | | | | |

Officially Released to the LBNL Document Control Center
Released: DCC Auth Key: 96DNU7SQ7C