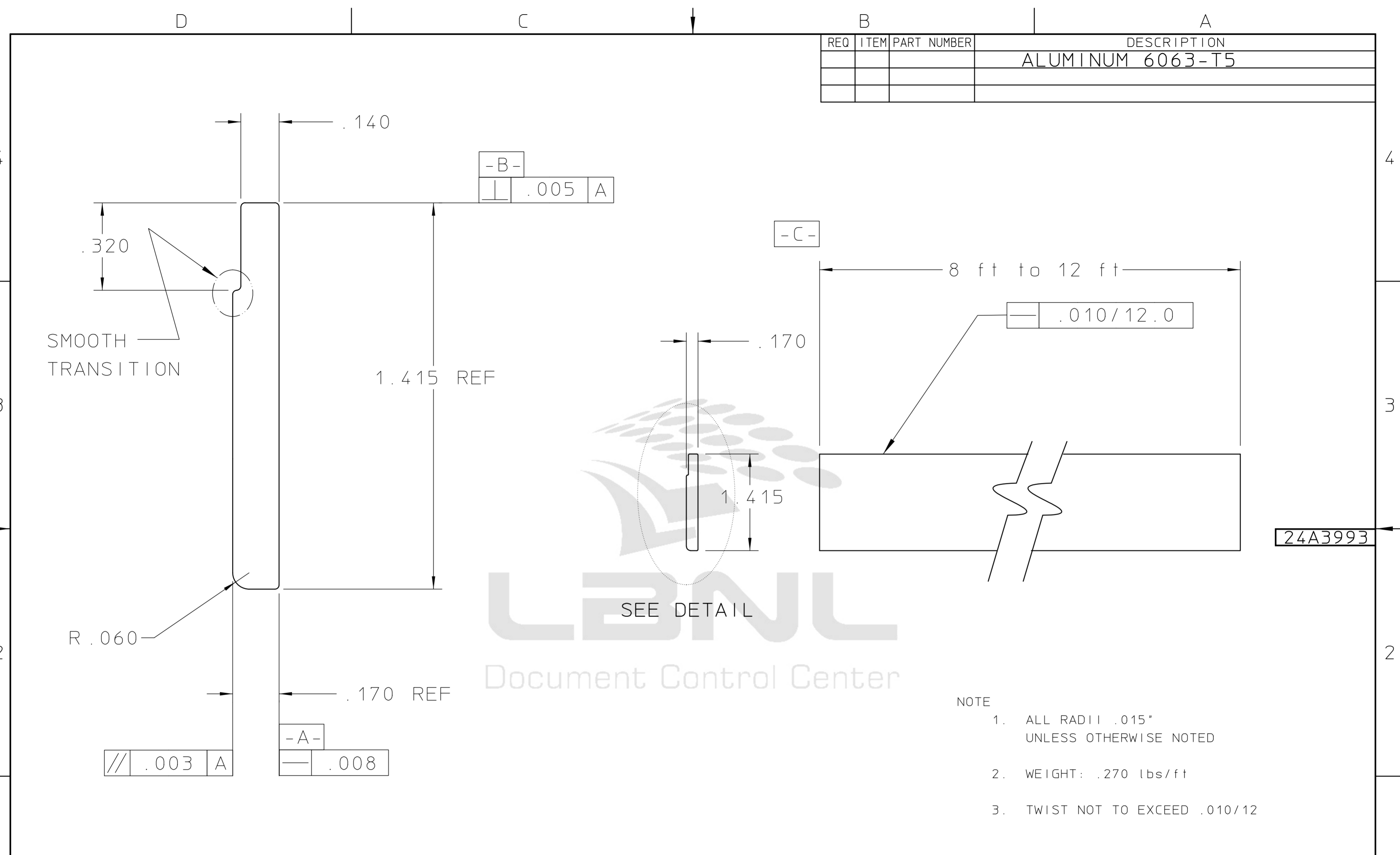


REQ	ITEM	PART NUMBER	DESCRIPTION
			ALUMINUM 6063-T5



- NOTE
- ALL RADII .015" UNLESS OTHERWISE NOTED
 - WEIGHT: .270 lbs/ft
 - TWIST NOT TO EXCEED .010/12

DETAIL
SCALE 4:1

REV	DWG	CHK	ZONE	DATE	CHANGES	UNLESS OTHERWISE SPECIFIED			SHOP ORDERS			LAWRENCE BERKELEY LABORATORY UNIVERSITY OF CALIFORNIA-BERKELEY						
						TOLERANCES	.X ± .1	FRAC. ± 1/64	ACCT. NO.	SERIAL NO.	RHIC STAR TPC							
							.XX ± .02	ANGLES ± .01°	DATE ISSD	DATE REQD.	NO. REQD.	INNER SECTOR ASSEMBLY						
							.XXX ± .005	FINISH 125√	DELIVER TO	SURFACE TREATMENT DEGREASE			SHIELD GRID WIRE MOUNT EXTRUSION					
						THREADS ARE CLASS 2 CHAMFER ENDS OF ALL SCREW THREADS 30° CUT 1.5 PITCH THRO RELIEF WITH ROUND NOSE TOOL ON MACHINE CUT THREADS.			IDENT. METH.	TAG	PATENT CLEAR	DWG. TYPE	SHOWN ON	SCALE	DO NOT SCALE PRINTS			
						BREAK EDGES .016 MAX. ON MACHINED WORK REMOVE BURRS WELD SPLATTER & LOOSE SCALE REFERENCES: ANSI Y14.5 & B46.1.			DWG. BY	J. BOEHM	DATE	94-01-18	MICROFILMED	DESIGN ACCT. NO.	CATEGORY CODE	DWG. NO.	SIZE	REV.
									CHK. BY	J. BERCOVITZ	DATE	93-11-05		8052-24	SR-02-04	24A3993		