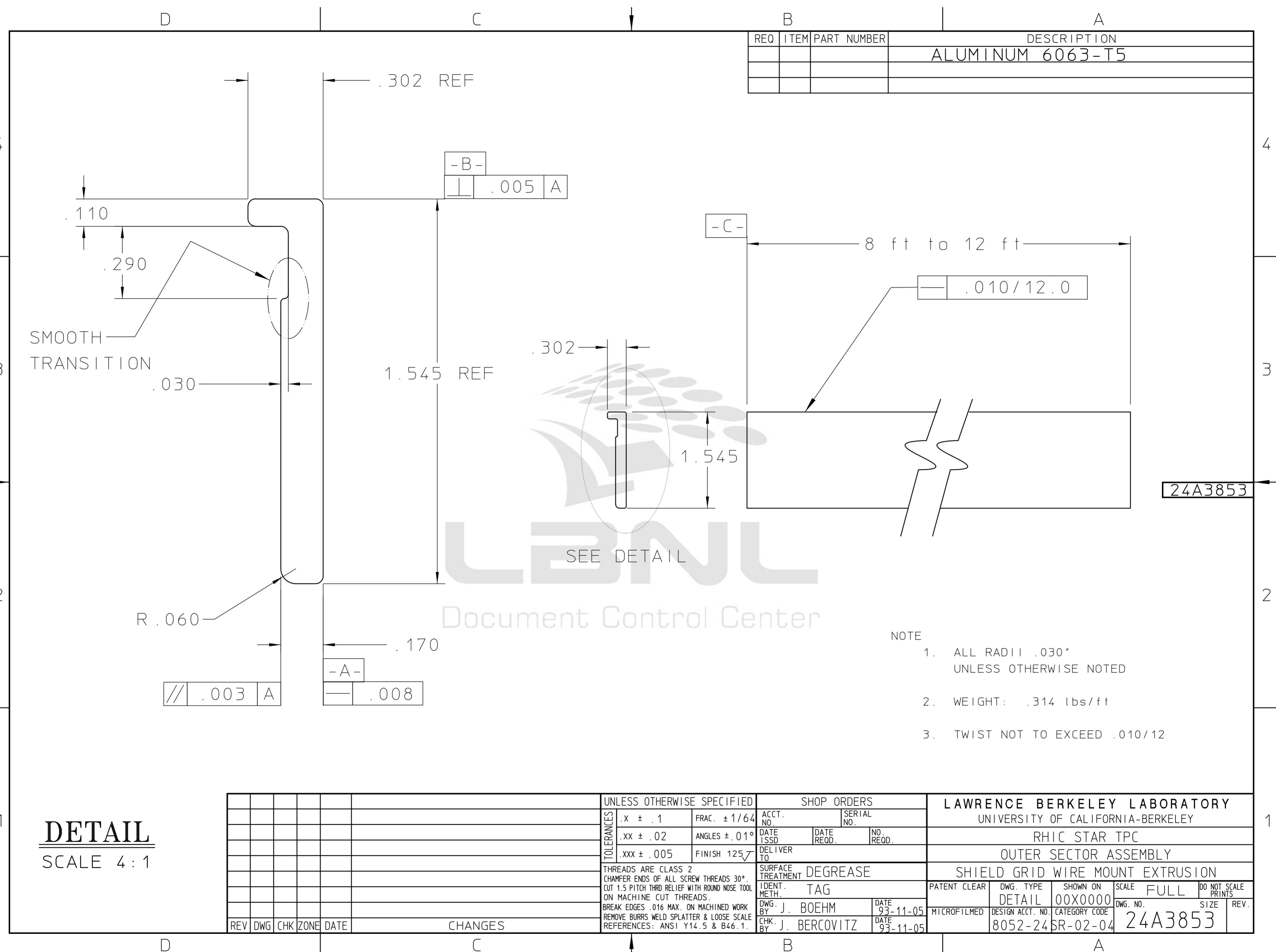


REQ	ITEM	PART NUMBER	DESCRIPTION
			ALUMINUM 6063-T5



24A3853

- NOTE
1. ALL RADII .030" UNLESS OTHERWISE NOTED
 2. WEIGHT: .314 lbs/ft
 3. TWIST NOT TO EXCEED .010/12

DETAIL
SCALE 4:1

REV	DWG	CHK	ZONE	DATE	CHANGES	UNLESS OTHERWISE SPECIFIED		SHOP ORDERS			LAWRENCE BERKELEY LABORATORY					
						TOLERANCES	.X ± .1	FRAC. ± 1/64	ACCT. NO.	SERIAL NO.	UNIVERSITY OF CALIFORNIA-BERKELEY					
							.XX ± .02	ANGLES ± .01°	DATE ISSD	DATE RECD.	NO. REQD.	RHIC STAR TPC				
							.XXX ± .005	FINISH 125√	DELIVER TO			OUTER SECTOR ASSEMBLY				
						THREADS ARE CLASS 2 CHAMFER ENDS OF ALL SCREW THREADS 30° CUT 1.5 PITCH THRO RELIEF WITH ROUND NOSE TOOL ON MACHINE CUT THREADS.			SURFACE TREATMENT DEGREASE			SHIELD GRID WIRE MOUNT EXTRUSION				
						BREAK EDGES .016 MAX. ON MACHINED WORK REMOVE BURRS WELD SPLATTER & LOOSE SCALE REFERENCES: ANSI Y14.5 & B46.1.			IDENT. METH. TAG			PATENT CLEAR	DWG. TYPE	SHOWN ON	SCALE	DO NOT SCALE PRINTS
									DWG. BY J. BOEHM DATE 93-11-05			MICROFILMED	DETAIL	00X0000	FULL	
									CHK. BY J. BERCOVITZ DATE 93-11-05			DESIGN ACCT. NO.	CATEGORY CODE	DWG. NO.	SIZE	REV.
												8052-24	SR-02-04	24A3853		