

24A3685D\_SHT.1\_STAR\_INSECT\_STRONGBACK

2 x .003 x 1.00 DEEP  
 Ø.7500±.0002 x .75 DEEP  
 C-SINK Ø.800 x 82°  
 PRESSFIT ITEM (2) SLEEVE  
 .025 to .045 BELOW SURFACE  
 (to accommodate .015 cleanup cut  
 at next operation)  
 BORE OUT SLEEVE TO: Ø.5003±.0002

10 RIBS BREAK EDGES .015 ALL AROUND  
 12 x R .030 MIN x R .093 MAX ALL AROUND

24.520  
 10.000  
 10.000  
 10.000  
 27.373  
 27.373  
 3.000  
 125  
 3.125  
 1.470  
 4.261  
 10.561  
 16.861  
 23.161  
 25.950  
 2.250  
 1.073  
 26.813  
 8 x R.75  
 1.073  
 1.23  
 1.60  
 1.189  
 4 x 6.0°  
 4 x 3.75  
 4 x 6.0°  
 2 x R.125  
 2 x .472  
 2X15.000

4 x BREAKOUT-POINT(see note 5)  
 125  
 3.125  
 3.000  
 125  
 3.125  
 1.470  
 4.261  
 10.561  
 16.861  
 23.161  
 25.950  
 2.250  
 1.073  
 26.813  
 8 x R.75  
 1.073  
 1.23  
 1.60  
 1.189  
 4 x 6.0°  
 4 x 3.75  
 4 x 6.0°  
 2 x R.125  
 2 x .472  
 2X15.000

SECTION A-A  
 SCALE: 1/2

SECTION B-B  
 SCALE: 1/2

SECTION D-D  
 SCALE: 1/2

SECTION E-E  
 SCALE: 1/2

SECTION F-F  
 SCALE: 1/2

SECTION G-G  
 SCALE: 1/2

Detail 1  
 Scale: 12

Detail 2  
 Scale: 12

Detail 3  
 Scale: 12

Detail 4  
 Scale: 12

Detail 5  
 Scale: 12

Detail 6  
 Scale: 12

Detail 7  
 Scale: 12

Detail 8  
 Scale: 12

Detail 9  
 Scale: 12

Detail 10  
 Scale: 12

Detail 11  
 Scale: 12

Detail 12  
 Scale: 12

Detail 13  
 Scale: 12

Detail 14  
 Scale: 12

Detail 15  
 Scale: 12

Detail 16  
 Scale: 12

Detail 17  
 Scale: 12

Detail 18  
 Scale: 12

Detail 19  
 Scale: 12

Detail 20  
 Scale: 12

Detail 21  
 Scale: 12

Detail 22  
 Scale: 12

Detail 23  
 Scale: 12

Detail 24  
 Scale: 12

Detail 25  
 Scale: 12

Detail 26  
 Scale: 12

Detail 27  
 Scale: 12

Detail 28  
 Scale: 12

Detail 29  
 Scale: 12

NOTES

1. MACHINING VENDOR TO FURNISH A COPY OF THE PLATE CERTIFICATION.
2. STEEL STAMP PART NO. "24A3685" IN 3/8" LETTERS IN LOCATION SHOWN.
3. WEIGHT OF PART MACHINED AS SHOWN IS APPROXIMATELY 70 LBS.
4. INSPECTION NOTE: GROOVE IS NOT AN O-RING GROOVE AND DOES NOT REQUIRE A 32 RMS FINISH.
5. "BREAK-OUT POINTS" ARE SYMMETRICAL ABOUT DATUM AXIS C.
6. DATUM PLANES E & D ARE THE STEPPED-BACK SURFACES WITH THE .313-18 HOLE PATTERN.

24A3685D

LABORATORY

24A3685 D

SHEET 1 OF 2

24A3685 D

24A3685 D

24A3685 D

24A3685 D

24A3685 D

24A3685 D

24A3685 D

24A3685 D

24A3685 D

24A3685 D

24A3685 D

24A3685 D

24A3685 D

24A3685 D

24A3685 D

24A3685 D

24A3685 D

24A3685 D

24A3685 D

24A3685 D

24A3685 D

24A3685 D

24A3685 D

24A3685 D

24A3685 D

24A3685 D

24A3685 D

24A3685 D

24A3685 D

24A3685 D

24A3685 D

24A3685 D

24A3685 D

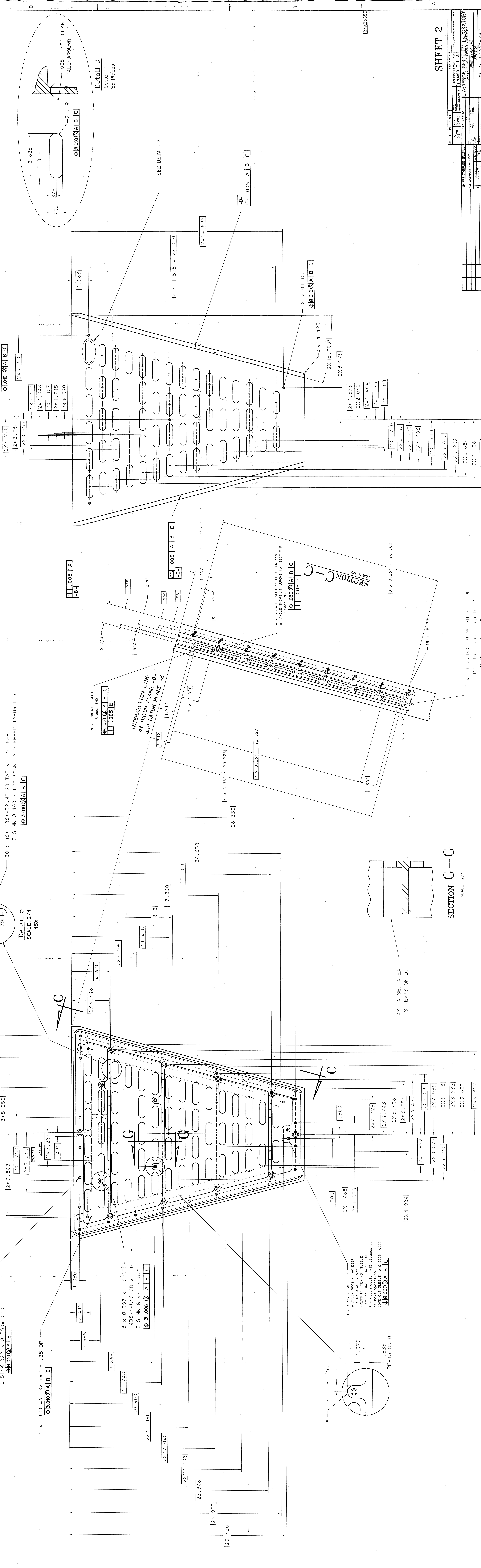
24A3685 D

24A3685 D

### SECTION G-G

SCALE: 2/1

4 X RAISED AREA  
1 S REVISION D.



TPC350-E-1A  
LAWRENCE BERKELEY LABORATORY  
UNIVERSITY OF CALIFORNIA, BERKELEY  
MATERIALS DIVISION

REVISE DATE

NO.	DESCRIPTION	DATE
1		
2		
3		
4		
5		