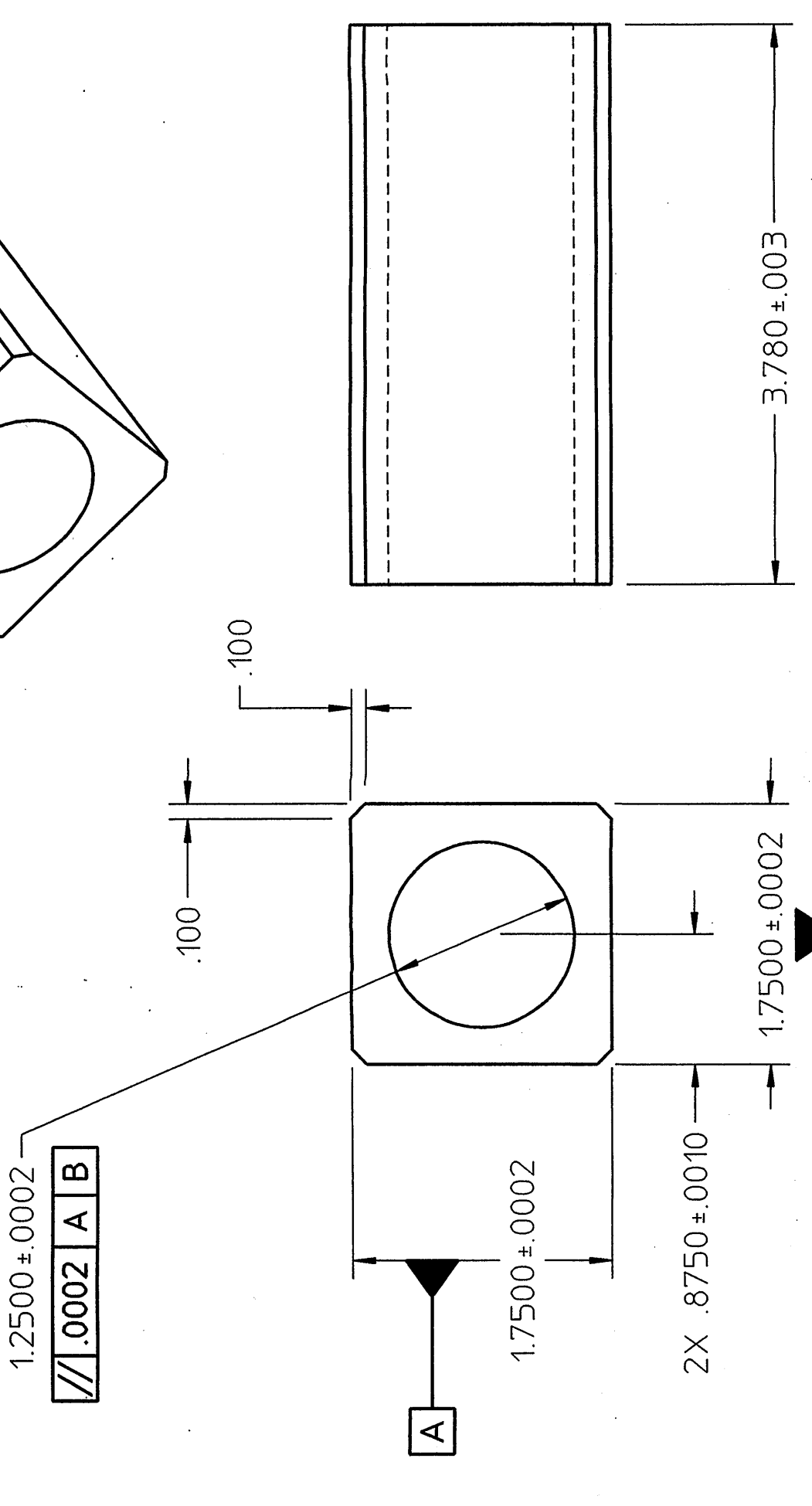
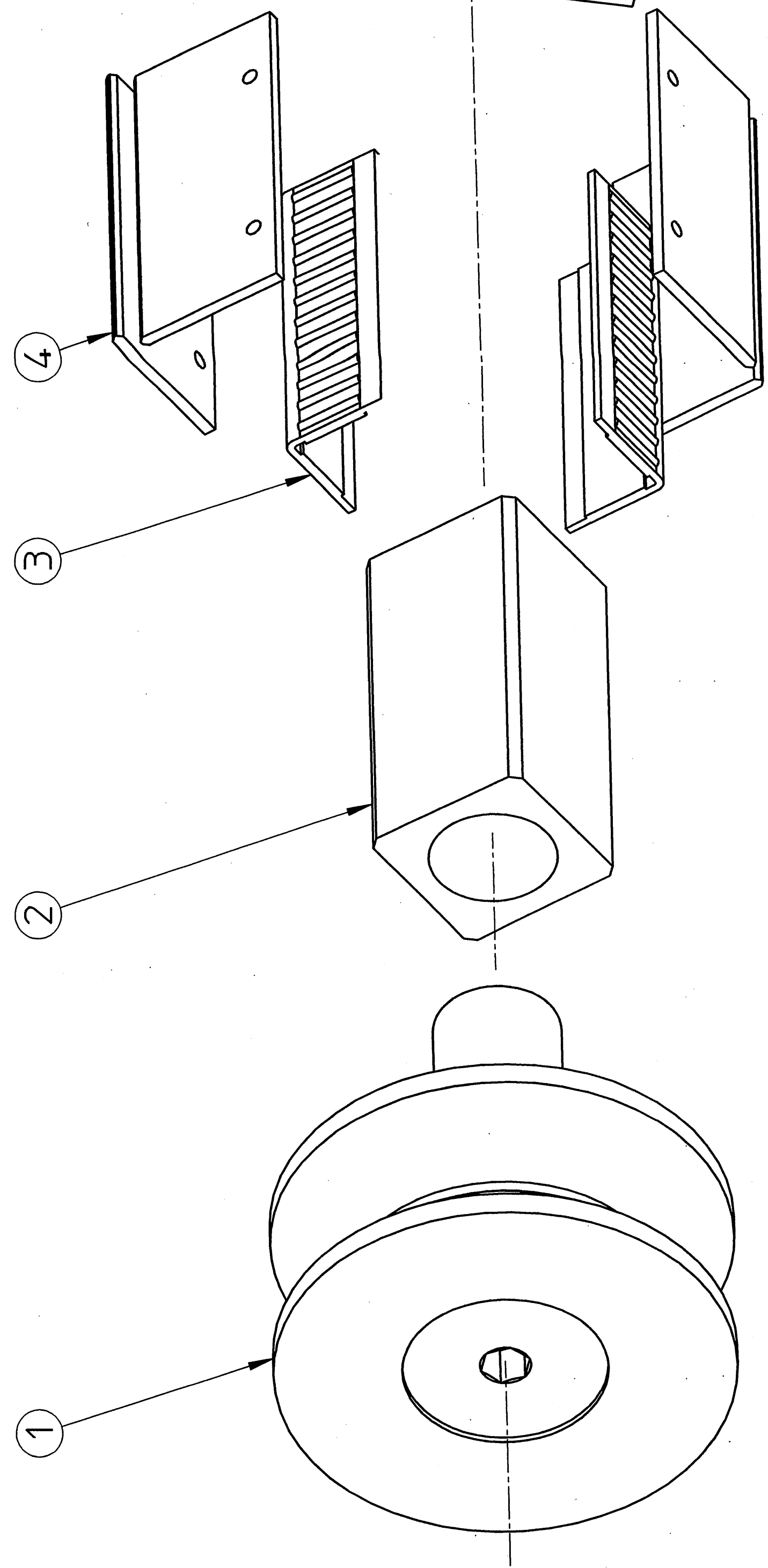
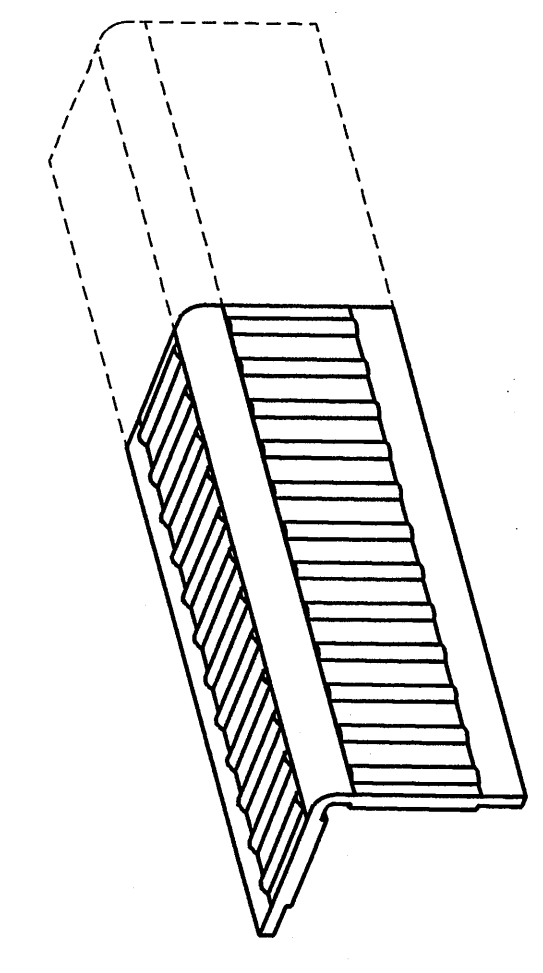


-4
OUTER RACEWAY

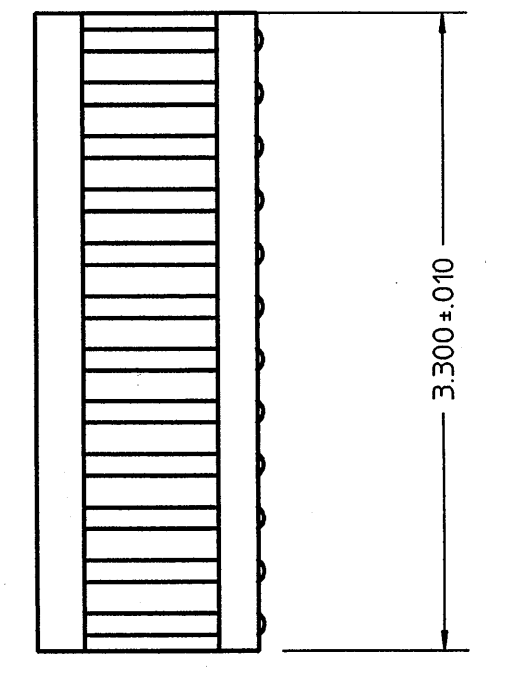


-2
INNER RACEWAY

NOTE:
1. MATERIAL IS 8620 STEEL
2. ALL DIMS = TO .XXXX ARE TO BE FINISHED AFTER CASE HARDENING
3. CASE HARDEN TO 50-55 R. DEPTH .03"
4. PARTS TO BE X-RAYED AFTER MACHINING AND INSPECTION



-6
OVER TRAVEL STOP



-3
CAGED ROLLER ASSEMBLY MODIFICATION

NOTE:
1. MATERIAL IS 8620 STEEL
2. ALL DIMS = TO .XXXX ARE TO BE FINISHED AFTER CASE HARDENING
3. CASE HARDEN TO 50-55 R. DEPTH .03"
4. PARTS TO BE X-RAYED AFTER MACHINING AND INSPECTION

REV	DATE	DESCRIPTION
1	10/2/98	ISSUED FOR FABRICATION
2	10/2/98	REVISED TO ADD DIMENSIONS
3	10/2/98	REVISED TO ADD DIMENSIONS
4	10/2/98	REVISED TO ADD DIMENSIONS
5	10/2/98	REVISED TO ADD DIMENSIONS
6	10/2/98	REVISED TO ADD DIMENSIONS
7	10/2/98	REVISED TO ADD DIMENSIONS
8	10/2/98	REVISED TO ADD DIMENSIONS
9	10/2/98	REVISED TO ADD DIMENSIONS
10	10/2/98	REVISED TO ADD DIMENSIONS
11	10/2/98	REVISED TO ADD DIMENSIONS

UNLESS OTHERWISE SPECIFIED	INCHES
ALL DIMENSIONS ARE	INCHES
ANGLES 15°	
FINISH	
XXX ± .005	
XX ± .010	
X ± .015	
UNLESS OTHERWISE SPECIFIED	INCHES
ALL DIMENSIONS ARE	INCHES
ANGLES 15°	
FINISH	
XXX ± .005	
XX ± .010	
X ± .015	

REV	DATE	DESCRIPTION
1	10/2/98	ISSUED FOR FABRICATION
2	10/2/98	REVISED TO ADD DIMENSIONS
3	10/2/98	REVISED TO ADD DIMENSIONS
4	10/2/98	REVISED TO ADD DIMENSIONS
5	10/2/98	REVISED TO ADD DIMENSIONS
6	10/2/98	REVISED TO ADD DIMENSIONS
7	10/2/98	REVISED TO ADD DIMENSIONS
8	10/2/98	REVISED TO ADD DIMENSIONS
9	10/2/98	REVISED TO ADD DIMENSIONS
10	10/2/98	REVISED TO ADD DIMENSIONS
11	10/2/98	REVISED TO ADD DIMENSIONS

REV	DATE	DESCRIPTION
1	10/2/98	ISSUED FOR FABRICATION
2	10/2/98	REVISED TO ADD DIMENSIONS
3	10/2/98	REVISED TO ADD DIMENSIONS
4	10/2/98	REVISED TO ADD DIMENSIONS
5	10/2/98	REVISED TO ADD DIMENSIONS
6	10/2/98	REVISED TO ADD DIMENSIONS
7	10/2/98	REVISED TO ADD DIMENSIONS
8	10/2/98	REVISED TO ADD DIMENSIONS
9	10/2/98	REVISED TO ADD DIMENSIONS
10	10/2/98	REVISED TO ADD DIMENSIONS
11	10/2/98	REVISED TO ADD DIMENSIONS