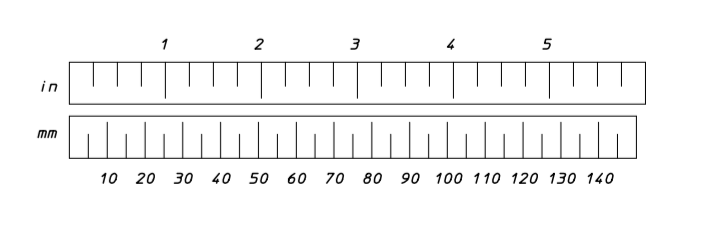
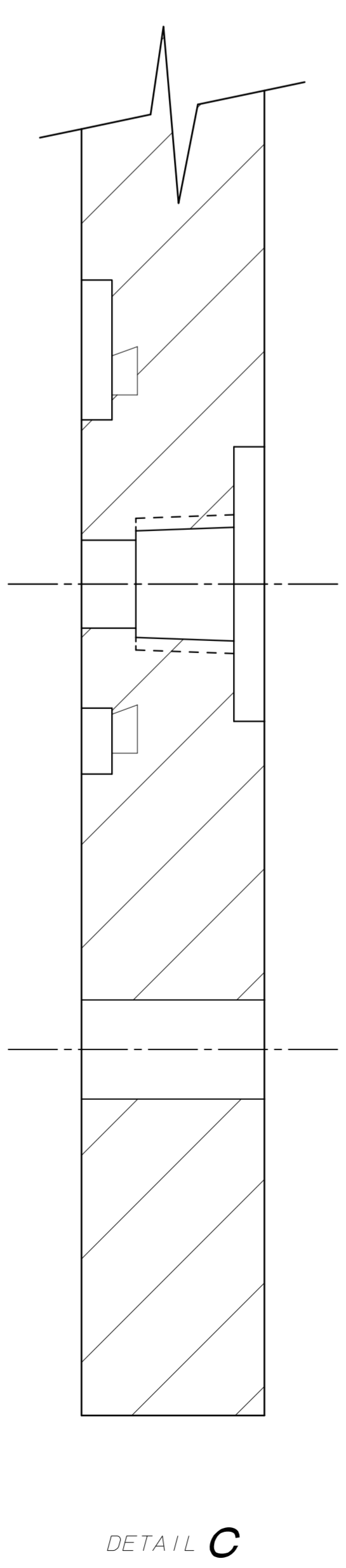
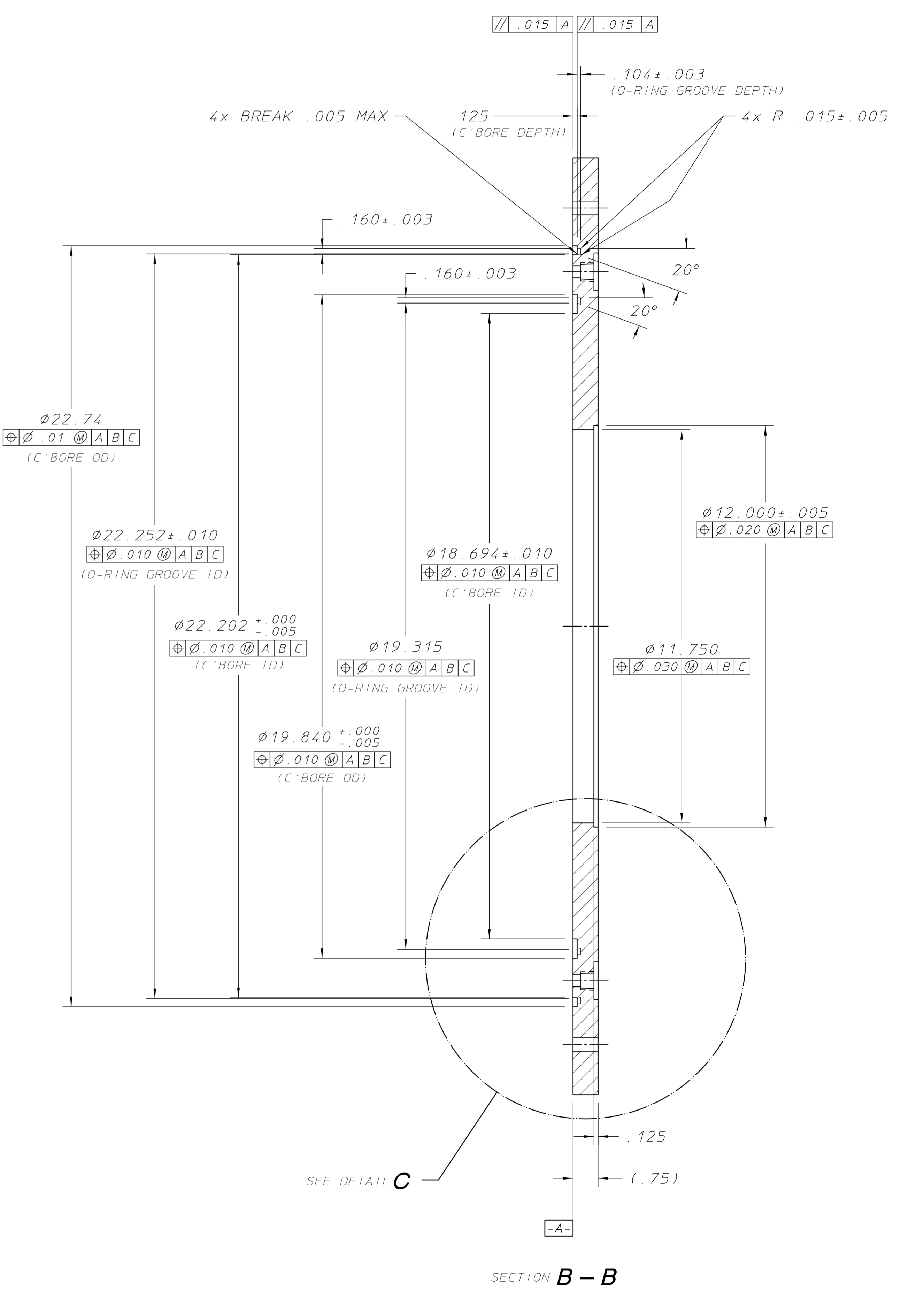
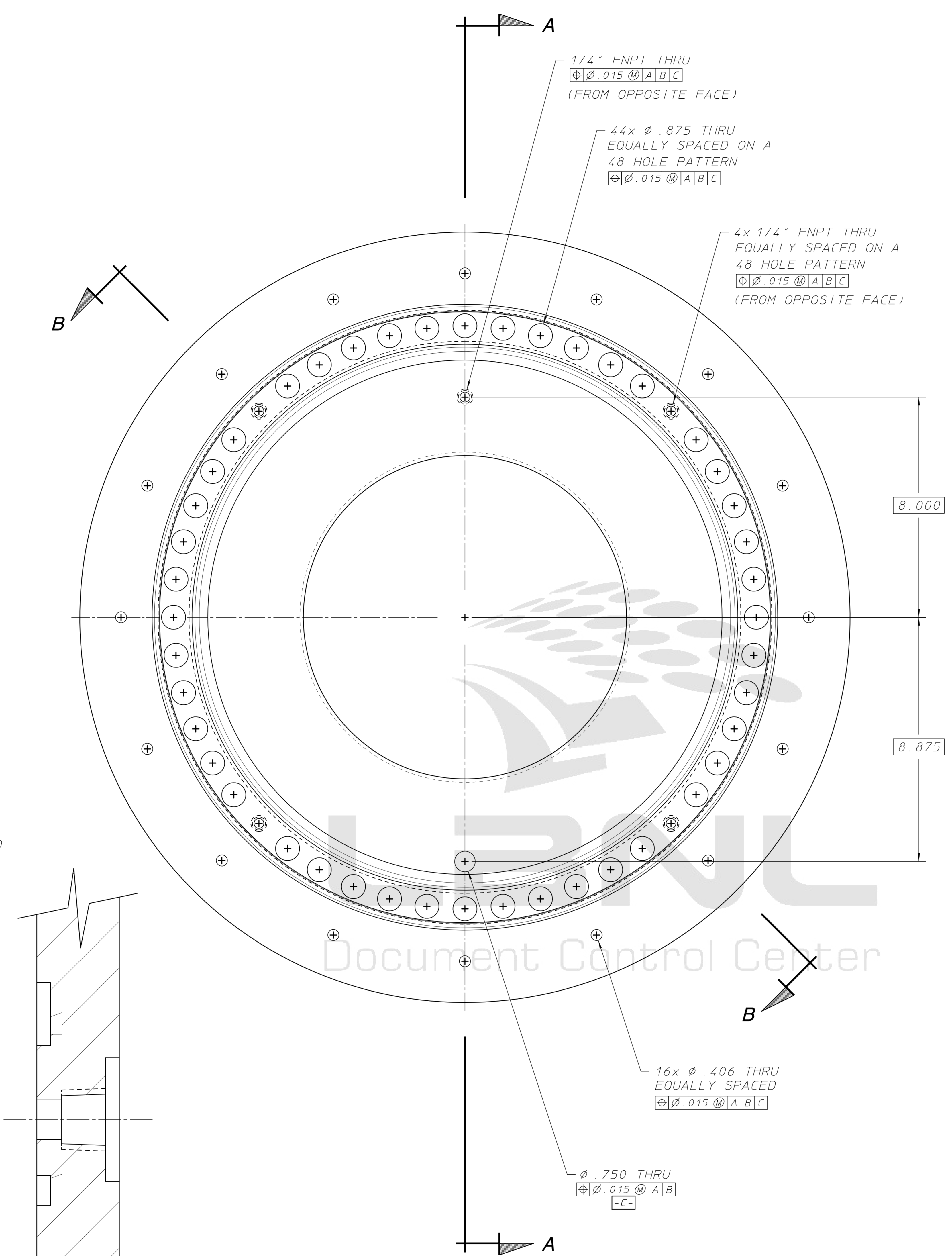
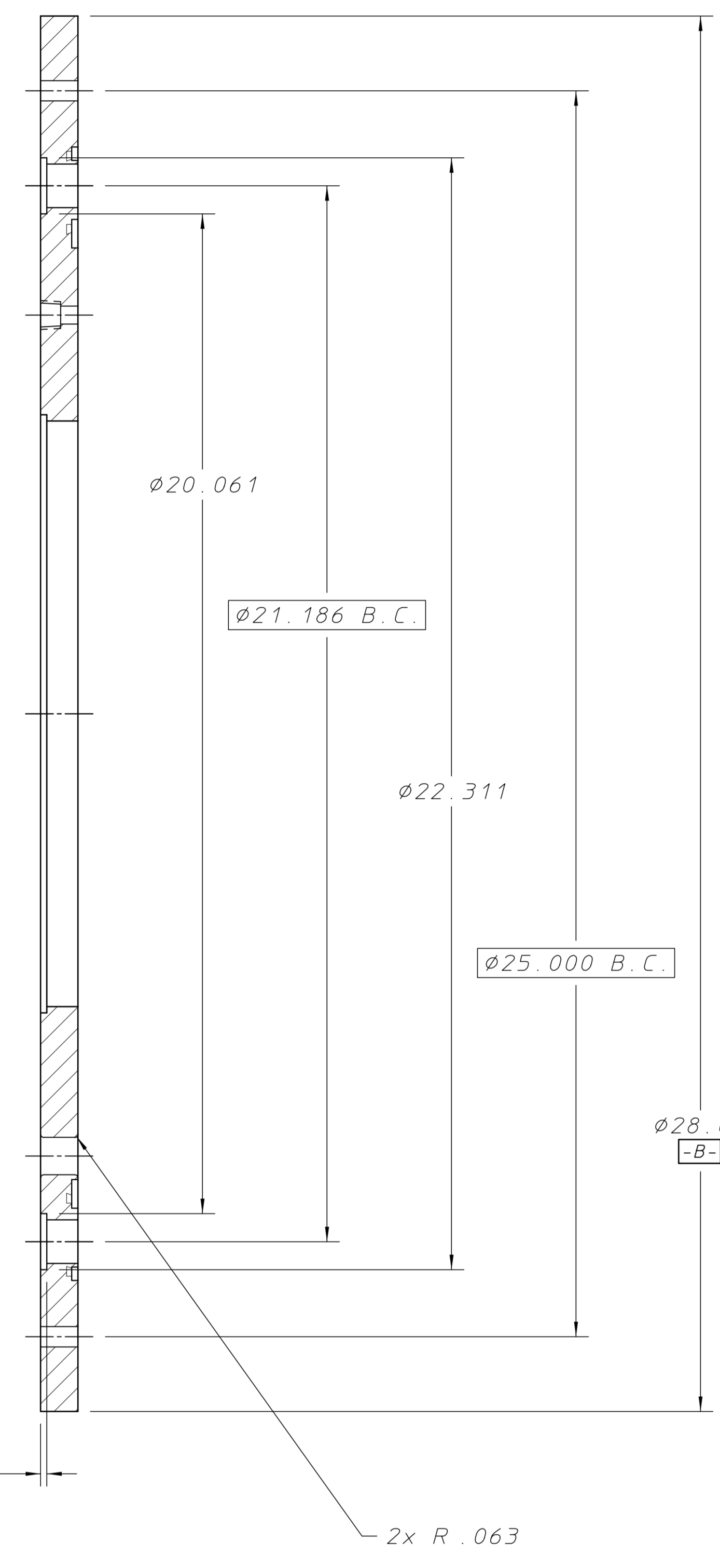


REQD	ITEM	PART NO.	DESCRIPTION
			PLATE, 150" THICK ALUMINUM 5052-H32

- NOTES, UNLESS OTHERWISE SPECIFIED:
- DIMENSIONING & TOLERANCING PER ANSI Y14.5M. UNITS ARE IN INCHES.
  - REMOVE ALL BURRS & BREAK ALL SHARP EDGES .01"-.02" CHAMFER OR RADIUS.
  - O-RING GROOVES TO BE MACHINED WITH A SINGLE POINT TOOL. (19.315" DIA & 22.503" DIA)
  - C-BORE TO BE MACHINED WITH A SINGLE POINT TOOL.



REV	CHG	CHK	ZONE	DATE	CHANGES

UNLESS OTHERWISE SPECIFIED:	SHOP ORDERS	LAWRENCE BERKELEY LABORATORY
SC: X ± .1	ACCT. NO. SERIAL NO.	UNIVERSITY OF CALIFORNIA-BERKELEY
TK: X ± .03	DATE ISSD. DATE RECD. INO. RECD.	RHIC - STAR - TIME PROJECTION CHAMBER
SS: XXX ± .015	FINISH 125/	OUTER FIELD (AGE 10FC) - GAS PROTOTYPE
THREADS ARE CLASS 2	SURFACE TREATMENT	END FLANGE CONTAINMENT VESSEL
CHAMFER ENDS OF ALL SCREW THREADS 30°	IDENT. DATE	PATENT CLEAR. DWG. TYPE
CUT 1.5 PITCH THRO RELIEF WITH RND MISE TOR.	DATE	SHOW ON SCALE HALF
ON MACHINE CUT THREADS	DWG. DATE	C. DETAIL
BREAK EDGES .016 MAX. ON MACHINED WORK	DWG. DATE	24A0706
REMOVE BURRS WELD SPATTER & LOOSE SCALE	DWG. DATE	24A0706
PREFERENCES: ANSI 174.2 & 842.1	DWG. DATE	24A0736
	DWG. DATE	24A0736

Officially Released to the LBNL Document Control Center  
Released: April 23rd, 1993 DCC Auth Key: 3KKFC030ZZ