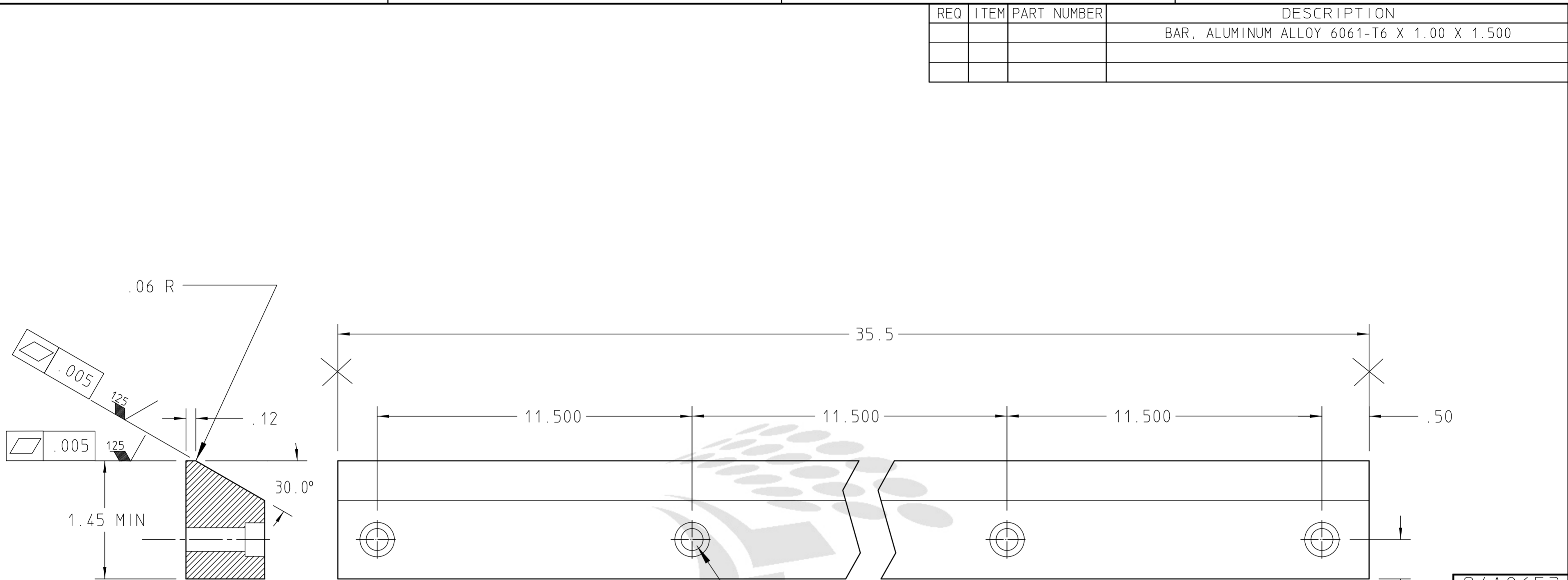
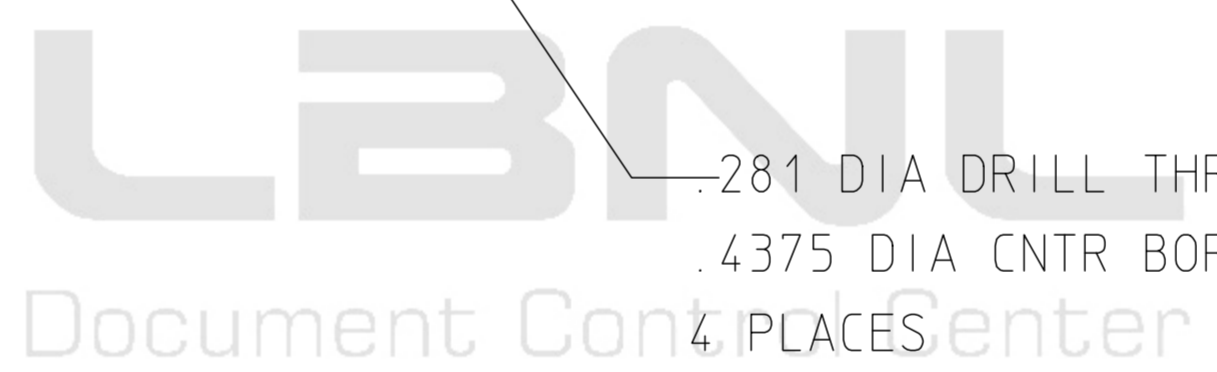


REQ	ITEM	PART NUMBER	DESCRIPTION
			BAR, ALUMINUM ALLOY 6061-T6 X 1.00 X 1.500



.281 DIA DRILL THRU
.4375 DIA CNTR BORE X .25 DP
4 PLACES



					UNLESS OTHERWISE SPECIFIED		SHOP ORDERS		LAWRENCE BERKELEY LABORATORY						
					.X ± .1 FRAC.		ACCT. NO. SERIAL NO.		UNIVERSITY OF CALIFORNIA-BERKELEY						
					.XX ± .02 ANGLES		DATE ISSD DATE REQD. NO. REQD.		RHIC-STAR-TPC						
					.XXX ± .010 FINISH 250		DELIVER TO		OUTER SECTOR						
					THREADS ARE CLASS 2		SURFACE TREATMENT BLACK ANODIZE		WIRE FRAME GUIDE BAR						
					CHAMFER ENDS OF ALL SCREW THREADS 30°		IDENT. METH.		PATENT CLEAR		DWG. TYPE SHOWN ON		SCALE NONE DO NOT SCALE PRINTS		
					CUT 1.5 PITCH THRU RELIEF WITH ROUND NOSE TOOL		BY R. CAYLOR DATE 3-11-93		MICROFILMED		DESIGN ACCT. NO. CATEGORY CODE		DWG. NO. SIZE REV.		
					ON MACHINE CUT THREADS.		CHK. BY DATE		8052-24		SR-04-02		24A0653		
					BREAK EDGES .016 MAX. ON MACHINED WORK										
					REMOVE BURRS WELD SPLATTER & LOOSE SCALE										
					REFERENCES: ANSI Y14.5 & B46.1.										
REV	DWG	CHK	ZONE	DATE	CHANGES										