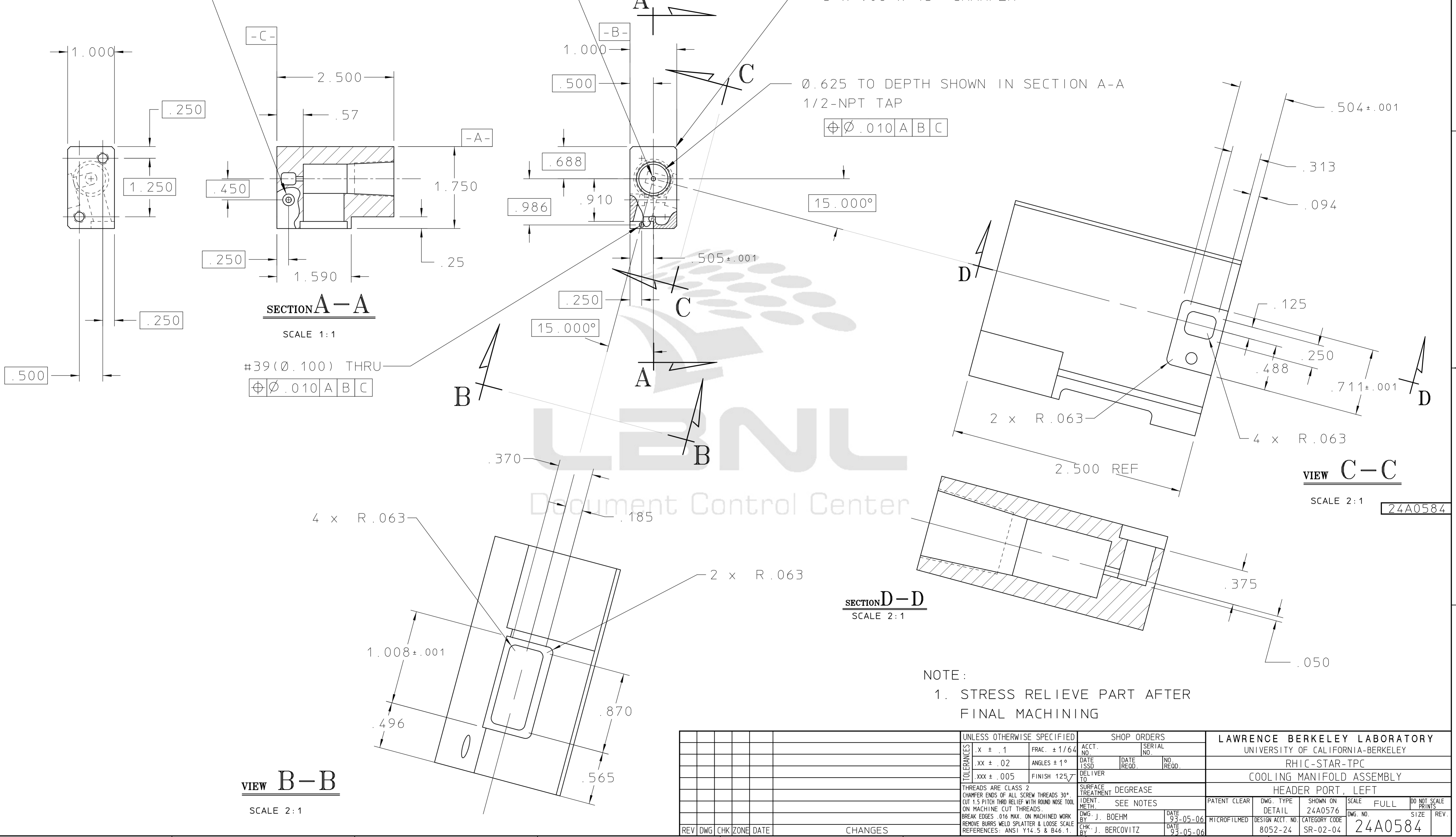


REQ	ITEM	PART NUMBER	DESCRIPTION
			ALUMINUM 6061-T6

#31 (Ø.120) THRU
C'SINK Ø.250
.312 DEEP
⊕Ø.010 A B C

Ø.093 THRU TO RECTANGULAR CHANNEL
DO NOT DRILL THRU BOTTOM WALL
⊕Ø.010 A B C



SECTION A-A
SCALE 1:1

#39 (Ø.100) THRU
⊕Ø.010 A B C

VIEW B-B
SCALE 2:1

SECTION D-D
SCALE 2:1

VIEW C-C
SCALE 2:1

NOTE:
1. STRESS RELIEVE PART AFTER
FINAL MACHINING

TOLERANCES				SHOP ORDERS			LAWRENCE BERKELEY LABORATORY					
.X ± .1	FRAC. ± 1/64	ACCT. NO.	SERIAL NO.	UNIVERSITY OF CALIFORNIA-BERKELEY								
.XX ± .02	ANGLES ± 1°	DATE ISSD	DATE RECD.	RHIC-STAR-TPC								
.XXX ± .005	FINISH 125/7	DELIVER TO		COOLING MANIFOLD ASSEMBLY								
THREADS ARE CLASS 2				SURFACE TREATMENT			HEADER PORT, LEFT					
CHAMFER ENDS OF ALL SCREW THREADS 30°				DEGREASE								
CUT 1.5 PITCH THRU RELIEF WITH ROUND NOSE TOOL				SEE NOTES								
ON MACHINE CUT THREADS.				PATENT CLEAR								
BREAK EDGES .016 MAX. ON MACHINED WORK				DWG. J. BOEHM			SCALE FULL					
REMOVE BURRS WELD SPLATTER & LOOSE SCALE				DATE 93-05-06			DWG. NO. 24A0576					
REFERENCES: ANSI Y14.5 & B46.1.				CHK. J. BERCOVITZ			DATE 93-05-06					
REV	DWG	CHK	ZONE	DATE	CHANGES	DATE	NO. RECD.	DESIGN ACCT. NO.	CATEGORY CODE	SCALE	SIZE	REV.
								8052-24	SR-02-04	24A0584		