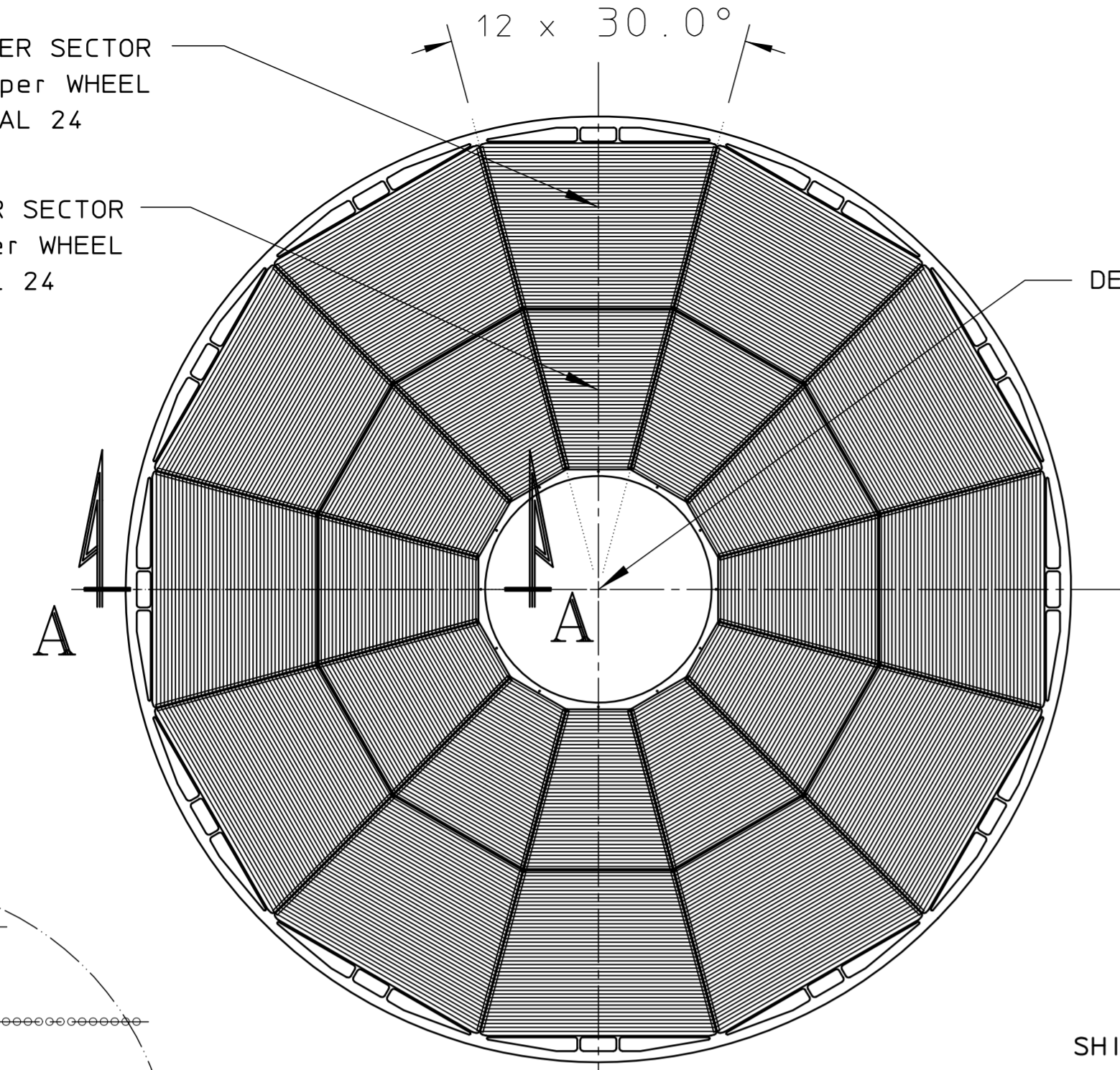


REQ	ITEM	PART NUMBER	DESCRIPTION

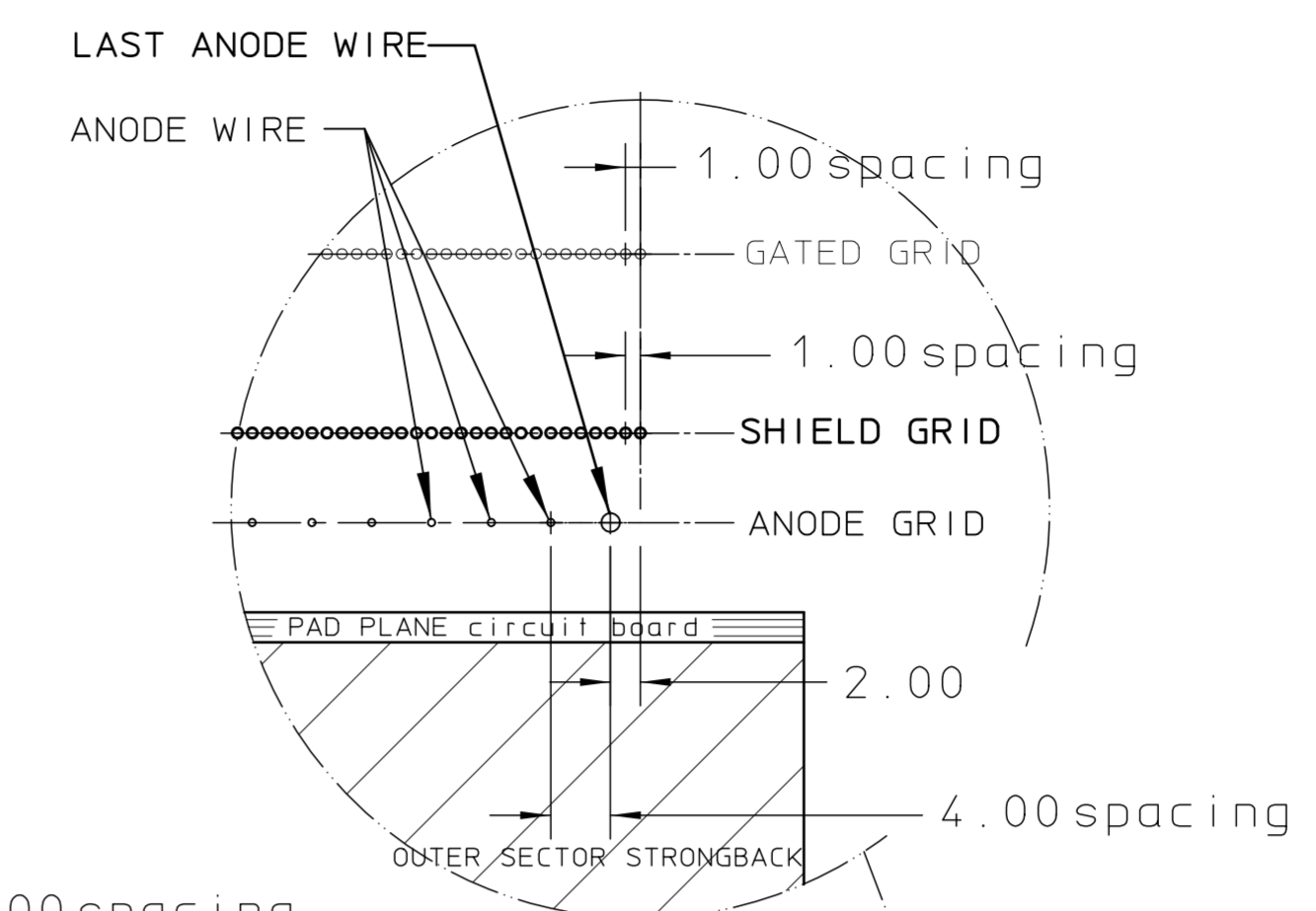
OUTER SECTOR
12 per WHEEL
TOTAL 24

INNER SECTOR
12 per WHEEL
TOTAL 24

DETECTOR CENTER LINE



STAR TPC WHEEL (2x)
View from inside the TPC

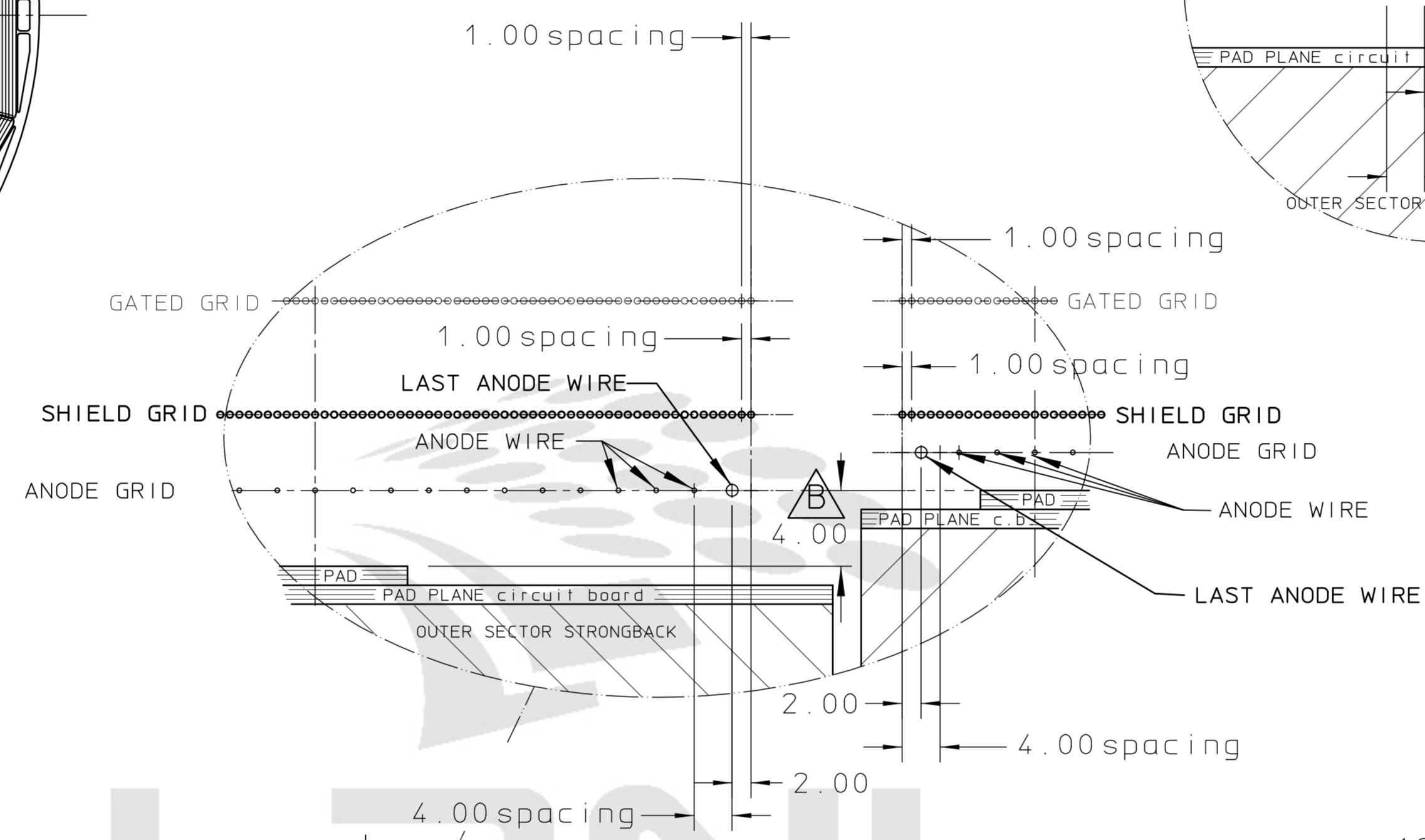


GATED GRID WIRE
0.075mm BeCu, Au plated
spacing 1mm
OUTER: 689 Wires
INNER: 681 Wires
TOTAL: 1,370 Wires per Sector

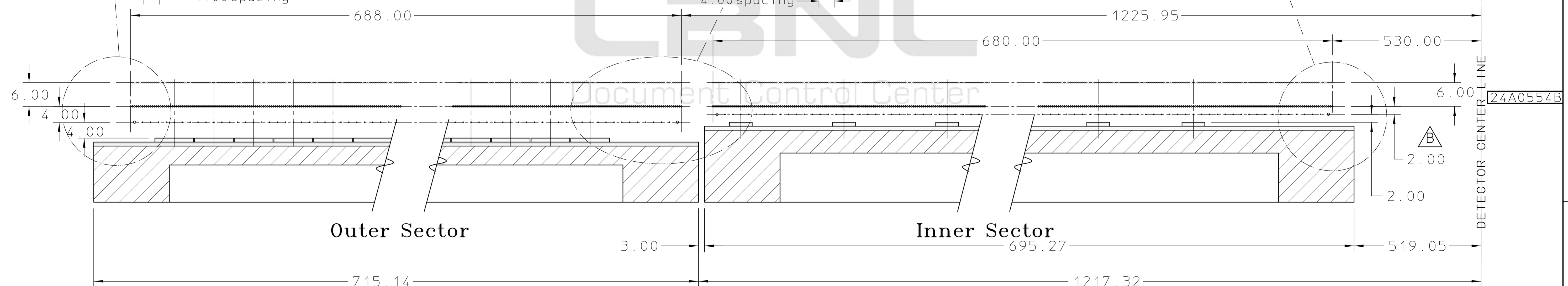
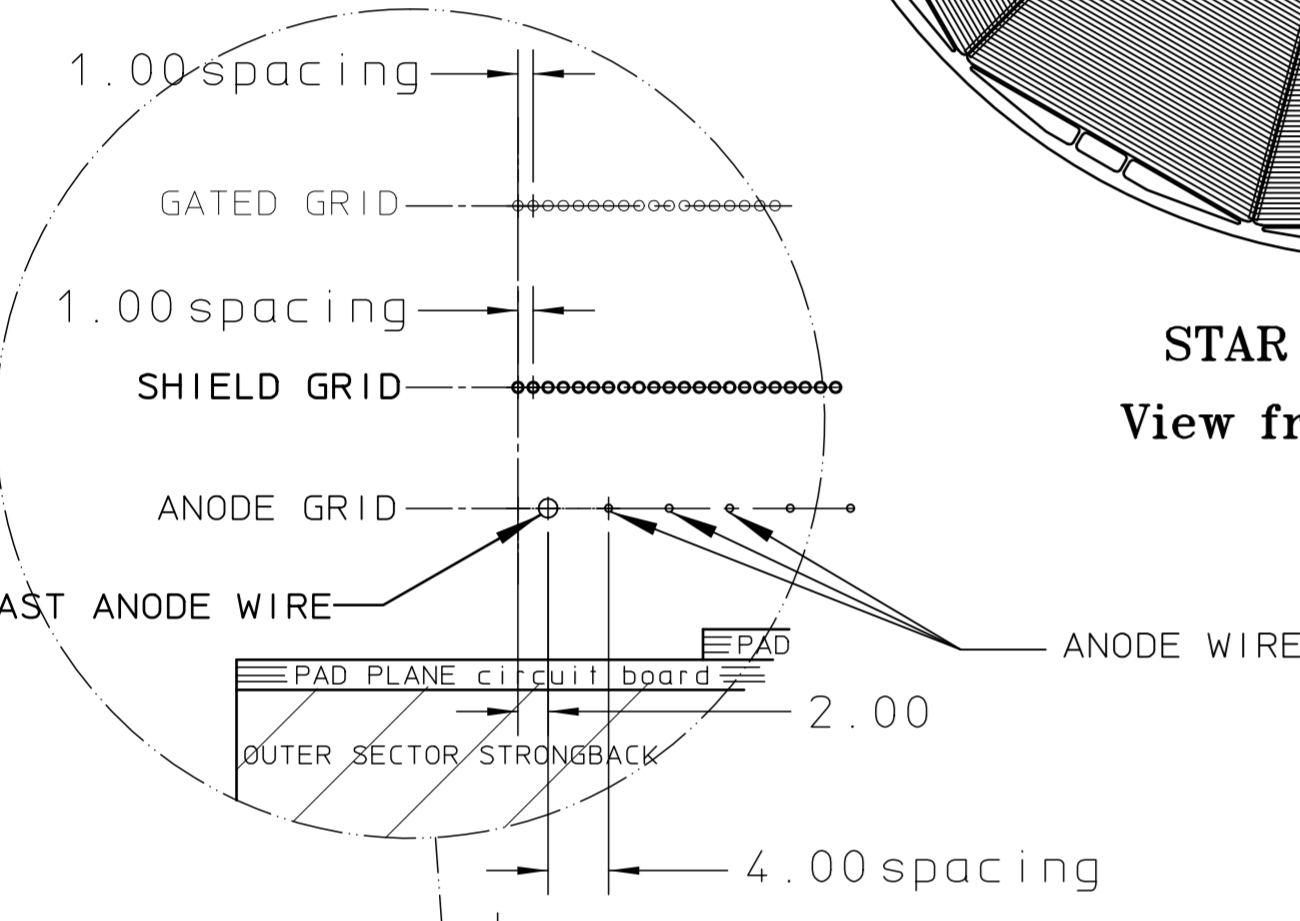
SHIELD GRID WIRE
0.075mm BeCu, Au plated
spacing 1mm
OUTER: 689 Wires
INNER: 681 Wires
TOTAL: 1,370 Wires per Sector

ANODE GRID WIRE
0.020mm W, Au plated
spacing 4mm
OUTER: 170 Wires
INNER: 168 Wires
TOTAL: 338 Wires per Sector

LAST ANODE WIRE
0.125mm BeCu, Au plated
OUTER: 2 Wires
INNER: 2 Wires
TOTAL: 4 Wires per Sector



SECTION A-A



NOTES:

- ALL DIMENSIONS ARE IN mm
- TOLERANCE FOR WIREPLACEMENT IS ±.1 RELATIVE TO EACH OTHER AND TO THE PADPLANE.
- TOLERANCE FOR THE PLACEMENT OF THE PADPLANES RELATIVE TO THE DETECTOR CENTER IS ±.5

SUMMARY OF CHANGES OVER REV A:
1. INNER SECTOR ANODE GRID-TO-SHIELD GRID SPACING WAS CHANGED FROM 3mm TO 2mm
2. SPACING OF INNER SECTOR-TO-OUTER SECTOR PAD PLANE WAS CHANGED FROM 3mm TO 4mm.
3. FIELD WIRES WERE DELETED.

UNLESS OTHERWISE SPECIFIED		SHOP ORDERS		LAWRENCE BERKELEY LABORATORY	
TOLERANCES	FRAC.	ACCT. NO.	SERIAL NO.	UNIVERSITY OF CALIFORNIA-BERKELEY	
.X		DATE ISSD	DATE RECD.	RHIC-STAR-TPC	
.XX	ANGLES		NO. RECD.	INNER AND OUTER SECTOR	
.XXX	FINISH	DELIVER TO		WIRE GRID CONFIGURATION	
THREADS ARE CLASS 2		SURFACE TREATMENT		PATENT CLEAR	DWG. TYPE
CHAMFER ENDS OF ALL SCREW THREADS 30°		IDENT. METH.			
CUT 1.5 PITCH THRO RELIEF WITH ROUND NOSE TOOL					
ON MACHINE CUT THREADS.					
BREAK EDGES .016 MAX. ON MACHINED WORK					
REMOVE BURRS WELD SPLATTER & LOOSE SCALE					
REFERENCES: ANSI Y14.5 & B46.1.					
B	JB	930722	2was3.4was3.deleted	FIELD WIRES	
A	JB	930428	INITIAL RELEASE		
REV	DWG	CHK	DATE	CHANGES	