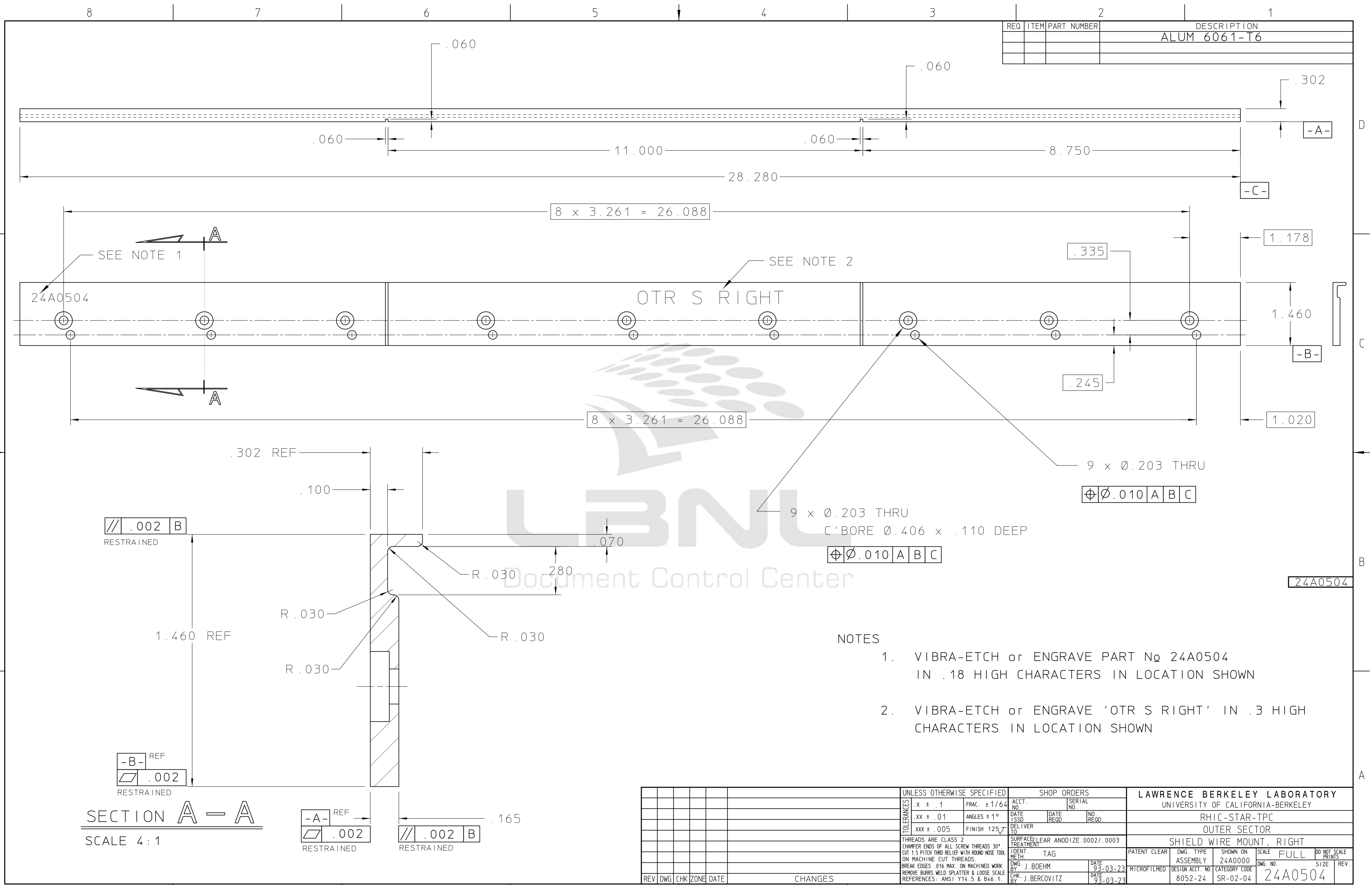


REQ	ITEM	PART NUMBER	DESCRIPTION
			ALUM 6061-T6



8 x 3.261 = 26.088

8 x 3.261 = 26.088

.335

1.178

.245

1.020

.002 B RESTRAINED

.002 B RESTRAINED

.002 B RESTRAINED

.002 B RESTRAINED

9 x Ø.010 A B C

9 x Ø.010 A B C

9 x Ø.203 THRU
C BORE Ø.406 x .110 DEEP

9 x Ø.203 THRU

24A0504

NOTES

- VIBRA-ETCH or ENGRAVE PART No 24A0504 IN .18 HIGH CHARACTERS IN LOCATION SHOWN
- VIBRA-ETCH or ENGRAVE 'OTR S RIGHT' IN .3 HIGH CHARACTERS IN LOCATION SHOWN

SECTION A-A
SCALE 4:1

REV	DWG	CHK	ZONE	DATE	CHANGES	TOLERANCES	UNLESS OTHERWISE SPECIFIED	SHOP ORDERS	LAWRENCE BERKELEY LABORATORY
						.X ± .1	FRAC. ± 1/64	ACCT. NO.	SERIAL NO.
						.XX ± .01	ANGLES ± 1°	DATE ISSD	DATE RECD.
						.XXX ± .005	FINISH 125/7	NO. RECD.	NO. RECD.
								DELIVER TO	
						THREADS ARE CLASS 2		SURFACE CLEAR ANODIZE .0002/.0003	SHIELD WIRE MOUNT, RIGHT
						CHAMFER ENDS OF ALL SCREW THREADS 30°		TREATMENT	
						CUT 1.5 PITCH THRU RELIEF WITH ROUND NOSE TOOL		IDENT. TAG	
						ON MACHINE CUT THREADS.		PATENT CLEAR	DWG. TYPE
						BREAK EDGES .016 MAX. ON MACHINED WORK		ASSEMBLY	24A0000
						REMOVE BURRS WELD SPLATTER & LOOSE SCALE		DATE	SCALE FULL
						REFERENCES: ANSI Y14.5 & B46.1.		DATE	DWG. NO.
								93-03-23	24A0504
								93-03-23	SIZE
									REV.