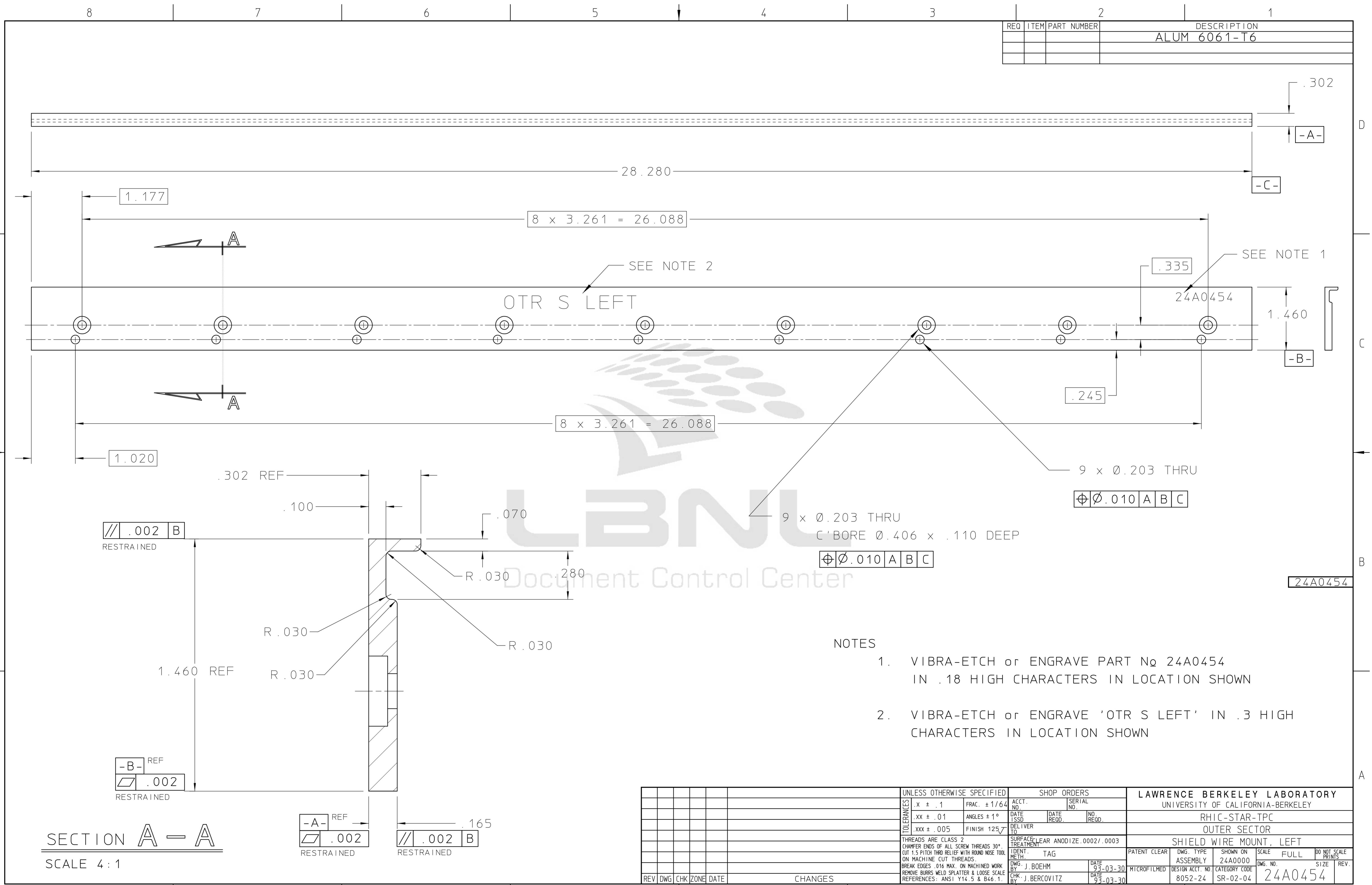


REQ	ITEM	PART NUMBER	DESCRIPTION
			ALUM 6061-T6



- NOTES
- VIBRA-ETCH or ENGRAVE PART No 24A0454 IN .18 HIGH CHARACTERS IN LOCATION SHOWN
 - VIBRA-ETCH or ENGRAVE 'OTR S LEFT' IN .3 HIGH CHARACTERS IN LOCATION SHOWN

SECTION A - A
SCALE 4 : 1

UNLESS OTHERWISE SPECIFIED		SHOP ORDERS		LAWRENCE BERKELEY LABORATORY UNIVERSITY OF CALIFORNIA-BERKELEY			
.X ± .1		FRAC. ± 1/64		ACCT. NO.	SERIAL NO.		RHIC-STAR-TPC OUTER SECTOR SHIELD WIRE MOUNT, LEFT
.XX ± .01		ANGLES ± 1°		DATE ISSD	DATE RECD.	NO. RECD.	
.XXX ± .005		FINISH 125		DELIVER TO		PATENT CLEAR	
THREADS ARE CLASS 2 CHAMFER ENDS OF ALL SCREW THREADS 30° CUT 1.5 PITCH THRO RELIEF WITH ROUND NOSE TOOL ON MACHINE CUT THREADS.				SURFACE TREATMENT CLEAR ANODIZE .0002/.0003		DWG. TYPE	
BREAK EDGES .016 MAX. ON MACHINED WORK REMOVE BURRS WELD SPLATTER & LOOSE SCALE REFERENCES: ANSI Y14.5 & B46.1.				IDENT. TAG		ASSEMBLY	
REV				DWG. BY: J. BOEHM		DATE: 93-03-30	
CHG				CHK: J. BERCOVITZ		DATE: 93-03-30	
ZONE				MICROFILMED		DESIGN ACCT. NO. 8052-24	
DATE				CATEGORY CODE		SR-02-04	
CHANGES				DWG. NO.		SCALE FULL	
				24A0000		DO NOT SCALE PRINTS	
				24A0454		REV.	