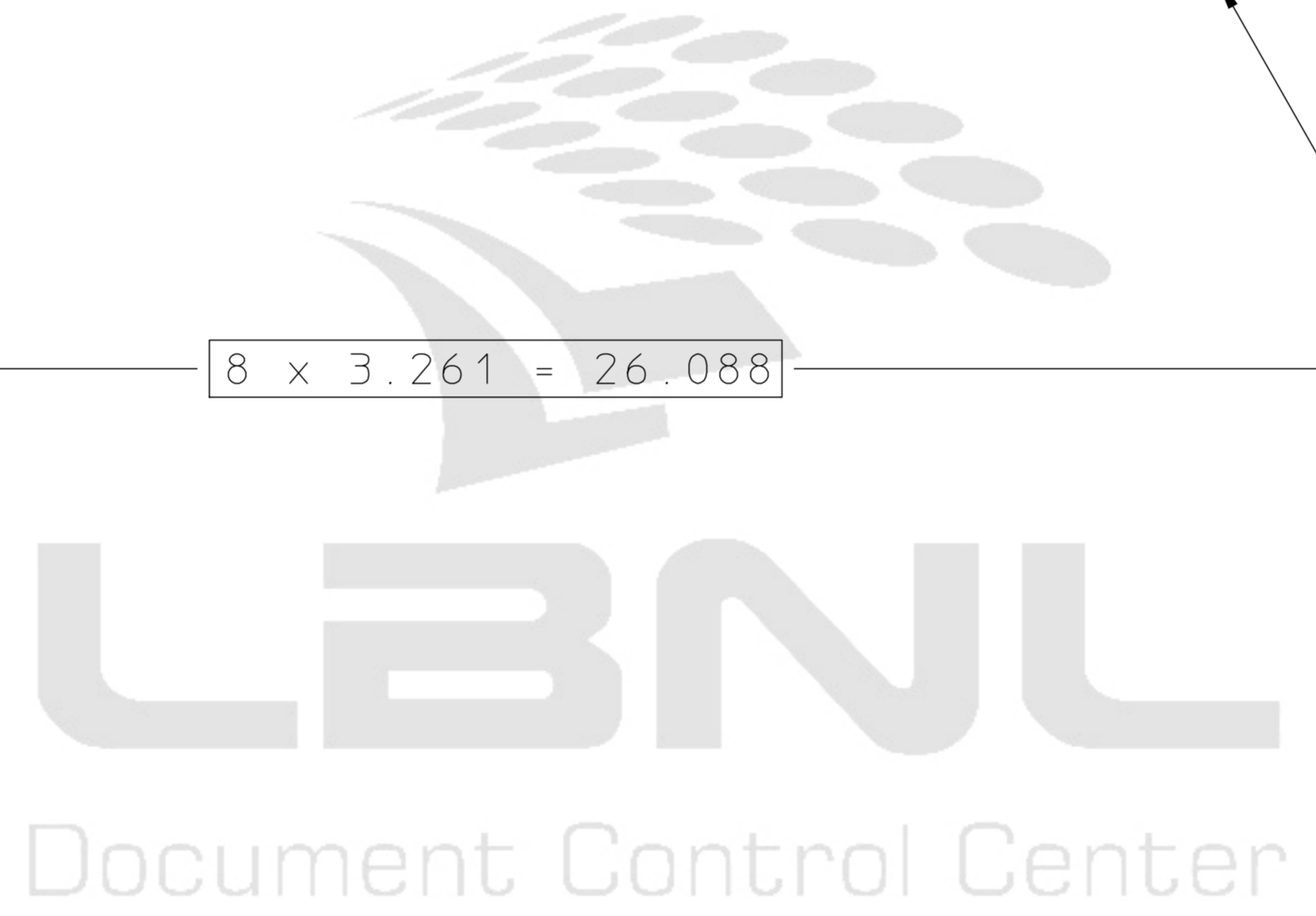
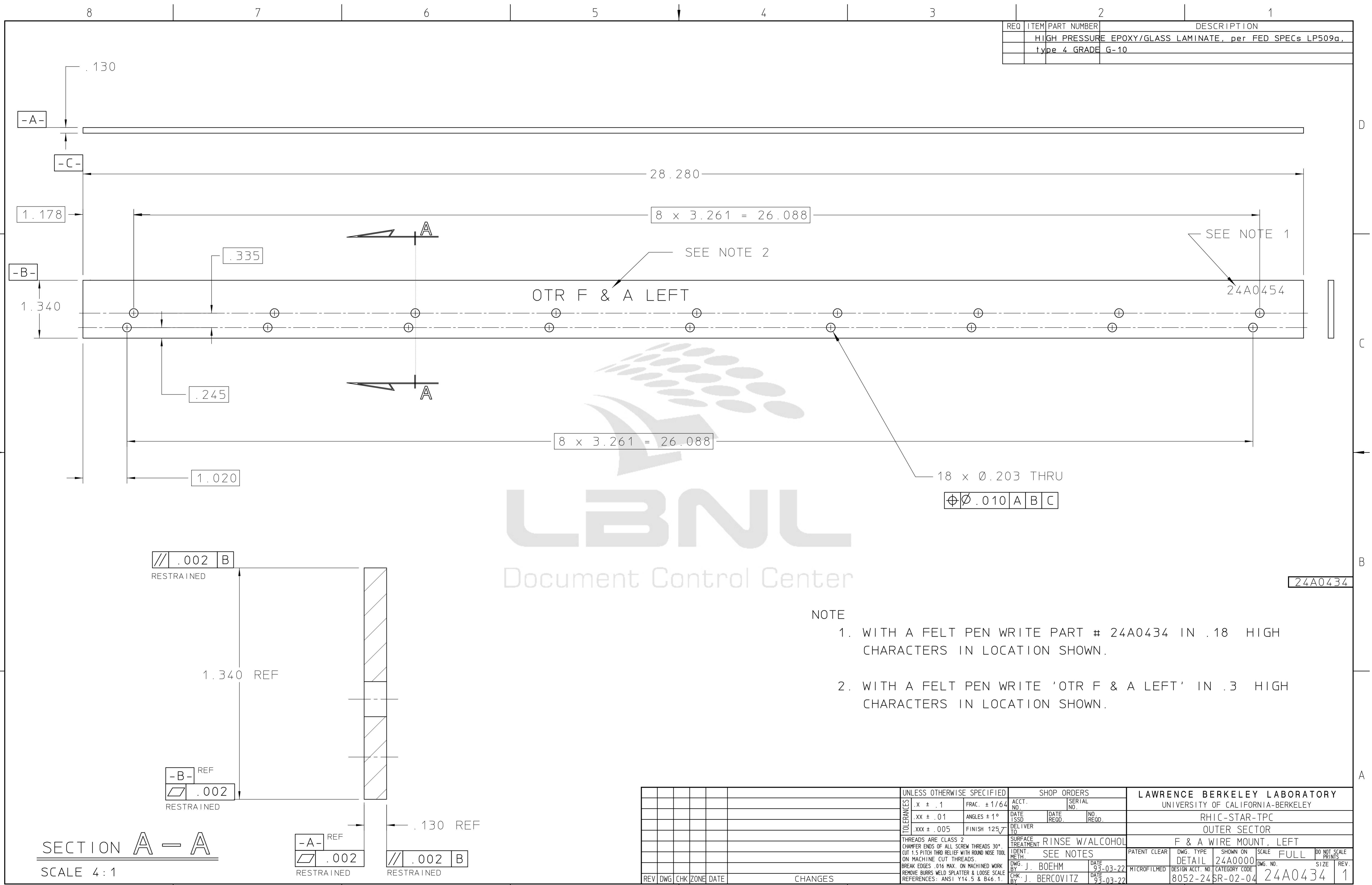
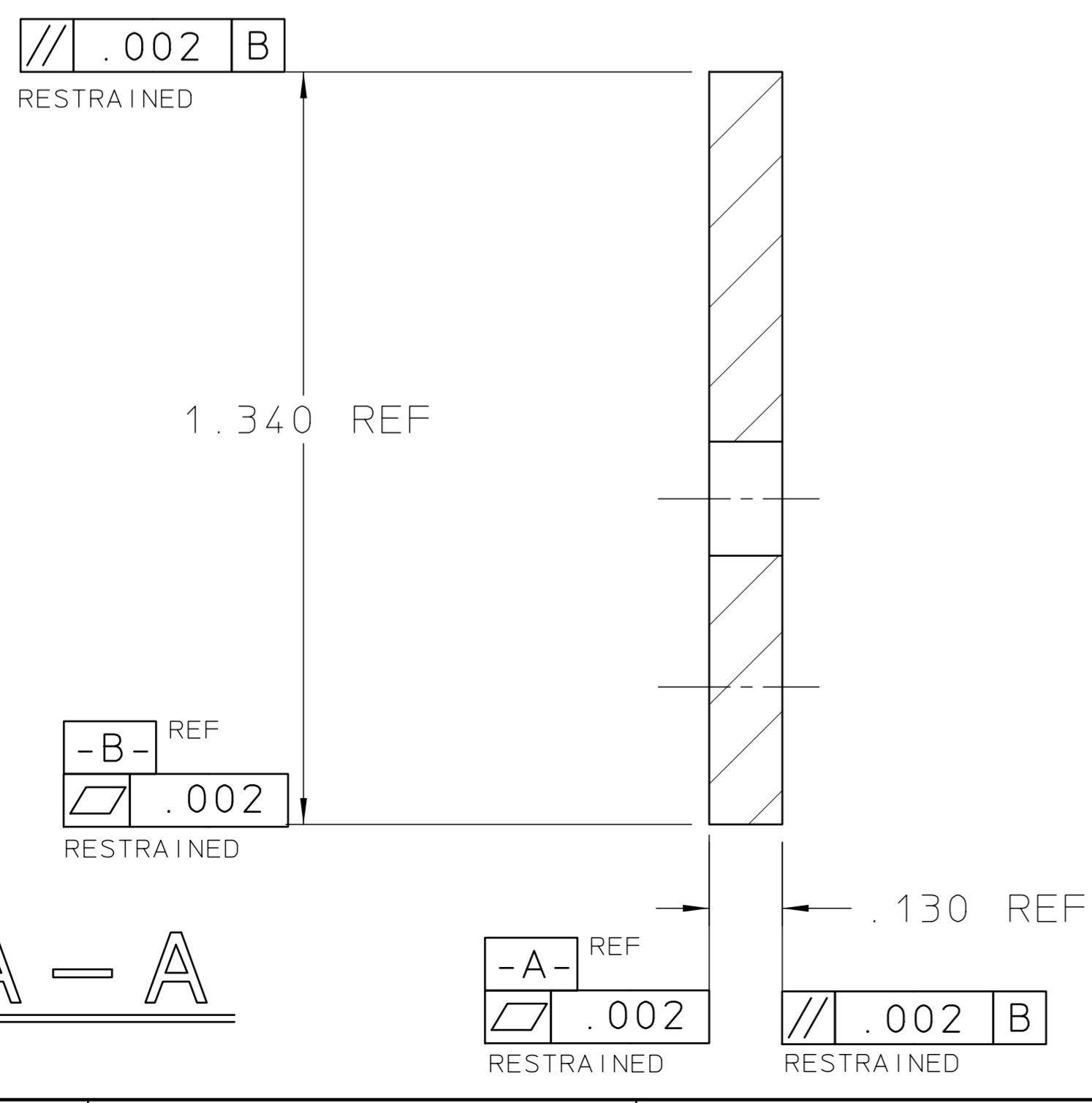


REQ	ITEM	PART NUMBER	DESCRIPTION
			HIGH PRESSURE EPOXY/GLASS LAMINATE, per FED SPECS LP509a,
			type 4 GRADE G-10



- NOTE
1. WITH A FELT PEN WRITE PART # 24A0434 IN .18 HIGH CHARACTERS IN LOCATION SHOWN.
 2. WITH A FELT PEN WRITE 'OTR F & A LEFT' IN .3 HIGH CHARACTERS IN LOCATION SHOWN.

SECTION A - A
SCALE 4:1



UNLESS OTHERWISE SPECIFIED				SHOP ORDERS				LAWRENCE BERKELEY LABORATORY			
.X ± .1		FRAC. ± 1/64		ACCT. NO.		SERIAL NO.		UNIVERSITY OF CALIFORNIA-BERKELEY			
.XX ± .01		ANGLES ± 1°		DATE ISSD		DATE RECD.		RHIC-STAR-TPC			
.XXX ± .005		FINISH 125		DELIVER TO				OUTER SECTOR			
THREADS ARE CLASS 2				SURFACE TREATMENT				F & A WIRE MOUNT, LEFT			
CHAMFER ENDS OF ALL SCREW THREADS 30°				RINSE W/ALCOHOL							
CUT 1.5 PITCH THRO RELIEF WITH ROUND NOSE TOOL				SEE NOTES							
ON MACHINE CUT THREADS.				PATENT CLEAR							
BREAK EDGES .016 MAX. ON MACHINED WORK				DWG. J. BOEHM				DETAIL 24A0000			
REMOVE BURRS WELD SPLATTER & LOOSE SCALE				DATE 93-03-22				SCALE FULL			
REFERENCES: ANSI Y14.5 & B46.1.				CHK: J. BERCOVITZ				DATE 93-03-22			
REV DWG CHK ZONE DATE				CHANGES				MICROFILMED			
								DESIGN ACCT. NO. 8052-246R-02-04			
								CATEGORY CODE			
								DWG. NO. 24A0434			
								DO NOT SCALE PRINTS			
								SIZE			
								REV. 1			