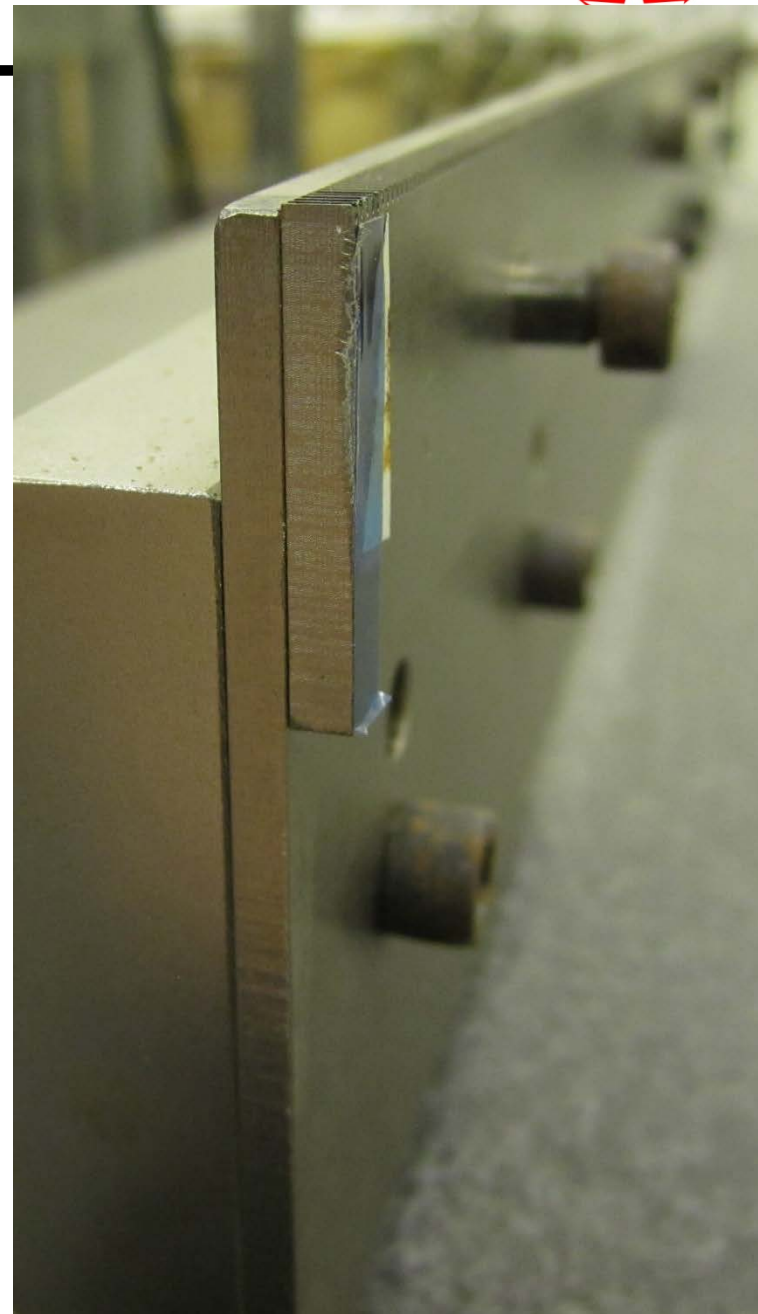
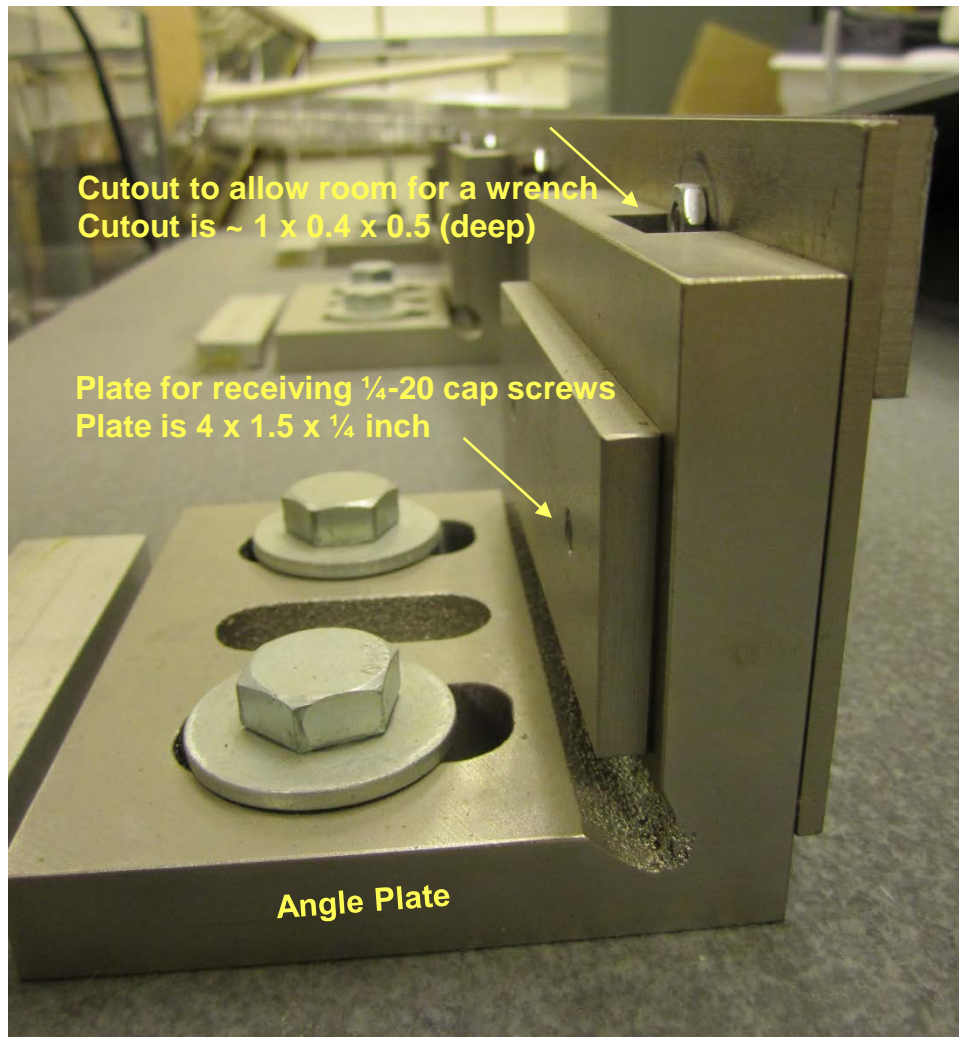


# Angle Plate for mounting the combs



- The combs are mounted on the granite tables using commercially made “angle plates”. The sides are flat, parallel and the 90 degree angle is a very accurate
  - <http://www.mscdirect.com/product/details/70145214>
  - Dimensions: 3 x 3.5 x 4.5 inches, 5/8 inch thick
  - The slots are 9/16 inch wide from the manufacturer but the group of three slots on the table at BNL have been machined to 3/4” width to make room for the 1/2 inch diameter hold down bolts plus some wiggle room.
- The straight edge is bolted directly to the angle plate by passing two 1/4-20 bolts through the long horizontal slot (shown above)
  - These bolts screw into a steel plate 4 x 1.5 x 1/4 inches which covers the slot
  - No other holes have been drilled in the angle plate other than those shown above
- The top side of the angle plate has been cut out to make room for a wrench
  - The wrench tightens the shoulder bolt that fastens the comb to the straight edge (upper set)
  - The cut-outs are in different locations on the three angle plates, but they are typically 1 inch long (or longer), 0.4 inches wide, and 0.5 inches deep (down)

